

## Datasheet for 600-401-DJ8

## Paralemmin3 Antibody

### Overview

<b>Description:</b>	Anti-Paralemmin3 (RABBIT) Antibody - 600-401-DJ8
<b>Item No.:</b>	600-401-DJ8
<b>Size:</b>	100 µg
<b>Applications:</b>	ELISA, IF, IHC, WB
<b>Reactivity:</b>	Human
<b>Host Species:</b>	Rabbit

### Product Details

<b>Background:</b>	Paralemmin3 is a recently identified protein that associates with the single immunoglobulin IL-1 receptor-related molecule (SIGIRR), a negative regulator of Toll-like receptor-interleukin 1 receptor signaling. Silencing of Paralemmin3 expression by RNAi inhibited the release of inflammatory cytokines in A549 cells after stimulation with lipopolysaccharide (LPS), suggesting Paralemmin3 may function as an adaptor in the LPS-TLR4 signaling pathway.
<b>Synonyms:</b>	Paralemmin3 Antibody, Paralemmin-3
<b>Host Species:</b>	Rabbit
<b>Clonality:</b>	Polyclonal
<b>Format:</b>	IgG

### Target Details

<b>Gene Name:</b>	PALM3
<b>Reactivity:</b>	Human
<b>Immunogen Type:</b>	Conjugated Peptide
<b>Immunogen:</b>	Anti-Paralemmin3 antibody was prepared from whole rabbit serum produced by repeated immunizations with a 19 amino acid synthetic peptide near the N-terminus of human Paralemmin3.

<b>Purity/Specificity:</b>	Anti-Paralemmin3 Antibody was affinity purified from monospecific antiserum by immunoaffinity chromatography. At least two isoforms of Paralemmin3 are known to exist; this antibody will only detect the longer isoform
<b>Relevant Links:</b>	<ul style="list-style-type: none"><li>• <a href="#">UniProtKB - A6NDB9</a></li><li>• <a href="#">GeneID - 342979</a></li><li>• <a href="#">NCBI - NP_001138500</a></li></ul>

## Application Details

<b>Tested Applications:</b>	ELISA, IF, IHC, WB
<b>Application Note:</b>	Anti-Paralemmin3 Antibody has been tested for use in ELISA, Western Blotting, Immunocytochemistry and Immunofluorescence. Specific conditions for reactivity should be optimized by the end user. Expect a band at approximately 72 kDa in Western Blots of specific cell lysates and tissues.
<b>Assay Dilutions:</b>	All assays should be optimized by the user. Recommended dilutions (if any) may be listed below.
<b>ELISA:</b>	1:10,000
<b>IF:</b>	20 µg/mL
<b>WB:</b>	1 µg/mL

## Formulation

<b>Physical State:</b>	Liquid (sterile filtered)
<b>Concentration:</b>	1 mg/mL by UV absorbance at 280 nm
<b>Buffer:</b>	0.01 M Sodium Phosphate, 0.25 M Sodium Chloride, pH 7.2
<b>Preservative:</b>	0.02% (w/v) Sodium Azide
<b>Stabilizer:</b>	None

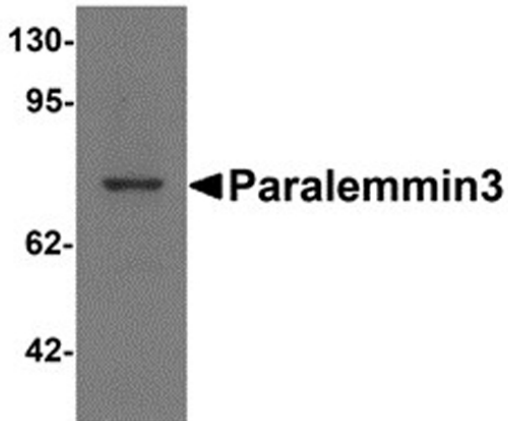
## Shipping & Handling

<b>Shipping Condition:</b>	Dry Ice
<b>Storage Condition:</b>	Store vial at -20° C prior to opening. Aliquot contents and freeze at -20° C or below for extended storage. Avoid cycles of freezing and thawing. Centrifuge product if not completely clear after standing at room temperature. This product is stable for several weeks at 4° C as an undiluted liquid. Dilute only prior to immediate use.

**Expiration:**

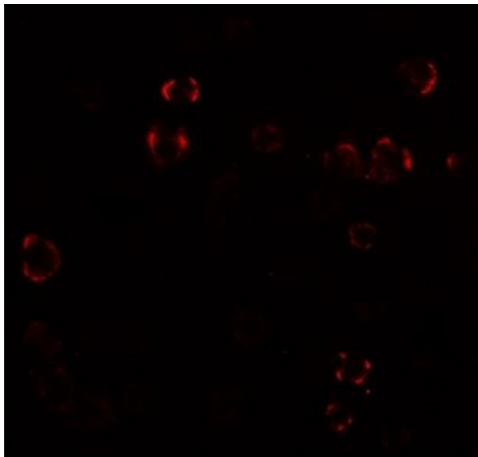
Expiration date is one (1) year from date of receipt.

## Images



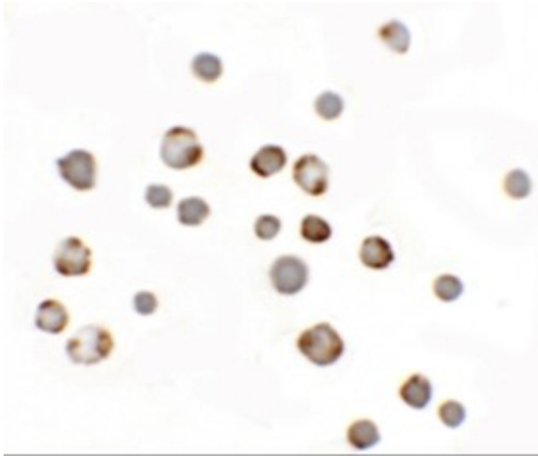
### Western Blot

Western blot analysis of Paralemmin 3. Load: MCF7 cell lysate. Primary Antibody: Paralemmin 3 antibody at 1  $\mu\text{g}/\text{mL}$ .



### Immunofluorescence Microscopy

Immunofluorescence of Paralemmin 3.  
Cell: MCF7 cells.  
Primary Antibody: Paralemmin 3 antibody at 20  $\mu\text{g}/\text{mL}$ .

**Immunocytochemistry**

Immunocytochemistry of Paralemmin 3.

Cell: MCF7 cells.

Primary Antibody: Paralemmin 3 antibody at 5 µg/mL.

**Disclaimer**

This product is for research use only and is not intended for therapeutic or diagnostic applications. Please contact a technical service representative for more information. All products of animal origin manufactured by Rockland Immunochemicals are derived from starting materials of North American origin. Collection was performed in United States Department of Agriculture (USDA) inspected facilities and all materials have been inspected and certified to be free of disease and suitable for exportation. All properties listed are typical characteristics and are not specifications. All suggestions and data are offered in good faith but without guarantee as conditions and methods of use of our products are beyond our control. All claims must be made within 30 days following the date of delivery. The prospective user must determine the suitability of our materials before adopting them on a commercial scale. Suggested uses of our products are not recommendations to use our products in violation of any patent or as a license under any patent of Rockland Immunochemicals, Inc. If you require a commercial license to use this material and do not have one, then return this material, unopened to: Rockland Inc., P.O. BOX 5199, Limerick, Pennsylvania, USA.