

Datasheet for 600-401-DJ5**PAK6 Antibody****Overview**

Description:	Anti-PAK6 (RABBIT) Antibody - 600-401-DJ5
Item No.:	600-401-DJ5
Size:	100 µg
Applications:	ELISA, IF, IHC, WB
Reactivity:	Human
Host Species:	Rabbit

Product Details

Background: The p21-activated kinases (PAKs) are serine-threonine kinases that bind to the active forms of Cdc42 and Rac. They are divided into two groups, the first of which include PAK1, 2 and 3, and can be activated by Cdc42/Rac binding. Group 1 PAKs contain an autoinhibitory domain whose activity is regulated by Cdc42/Rac binding. The group 1 PAKs are known to be involved in cellular processes such as gene transcription, apoptosis, and cell morphology and motility. Much less is known about the second group, which includes PAK4, 5 and 6. These proteins are not activated by Cdc42/Rac binding. PAK6 was initially identified as an androgen receptor in a yeast two hybrid screen and was found to be highly expressed in testis and prostate tissues. Later experiments have shown it to be activated by MAP kinase kinase 6 and p38 MAP kinase, suggesting that PAK6 may play a role in the cellular response to stress-related signals.

Synonyms:	PAK6 Antibody, PAK5, PAK5, PAK-5, PAK-6
Host Species:	Rabbit
Clonality:	Polyclonal
Format:	IgG

Target Details

Gene Name:	PAK6
Reactivity:	Human
Immunogen Type:	Conjugated Peptide

Immunogen:	Anti-PAK6 antibody was prepared from whole rabbit serum produced by repeated immunizations with a 13 amino acid synthetic peptide from near the internal region of human PAK6.
Purity/Specificity:	Anti-PAK6 Antibody was affinity purified from monospecific antiserum by immunoaffinity chromatography. Cross reactivity with PAK6 from other sources has not been determined.
Relevant Links:	<ul style="list-style-type: none">• UniProtKB - Q9NQU5• GeneID - 56924• NCBI - NP_064553

Application Details

Tested Applications:	ELISA, IF, IHC, WB
Application Note:	Anti-PAK6 Antibody has been tested for use in ELISA, Western Blotting, Immunohistochemistry and Immunofluorescence. Specific conditions for reactivity should be optimized by the end user. Expect a band at approximately 75 kDa in Western Blots of specific cell lysates and tissues.
Assay Dilutions:	All assays should be optimized by the user. Recommended dilutions (if any) may be listed below.
ELISA:	1:10,000 - 1:40,000
IF:	10 µg/mL
IHC:	10 µg/mL
WB:	1-4 µg/mL

Formulation

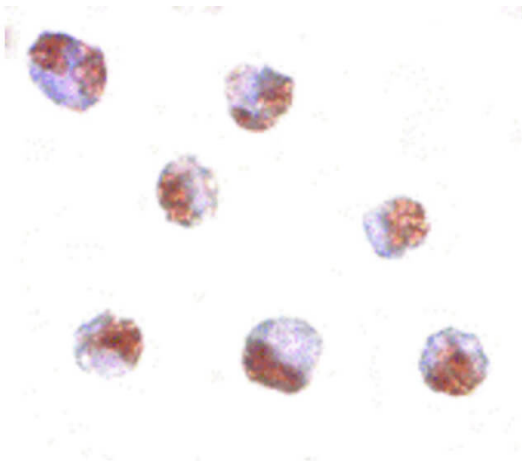
Physical State:	Liquid (sterile filtered)
Concentration:	1 mg/mL by UV absorbance at 280 nm
Buffer:	0.01 M Sodium Phosphate, 0.25 M Sodium Chloride, pH 7.2
Preservative:	0.02% (w/v) Sodium Azide
Stabilizer:	None

Shipping & Handling

Shipping Condition:	Dry Ice
----------------------------	---------

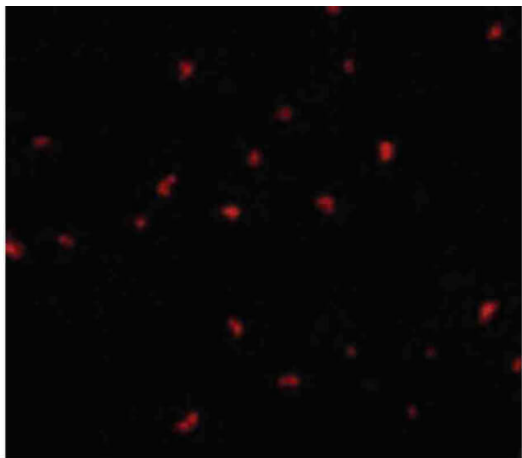
Storage Condition:	Store vial at -20° C prior to opening. Aliquot contents and freeze at -20° C or below for extended storage. Avoid cycles of freezing and thawing. Centrifuge product if not completely clear after standing at room temperature. This product is stable for several weeks at 4° C as an undiluted liquid. Dilute only prior to immediate use.
Expiration:	Expiration date is one (1) year from date of receipt.

Images



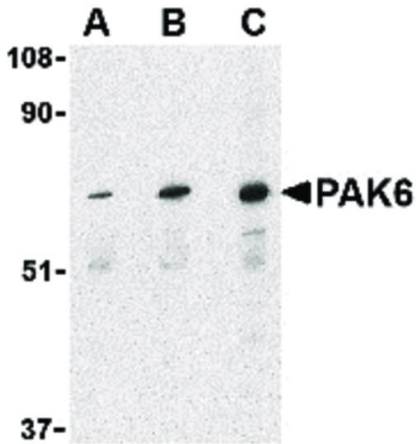
Immunohistochemistry

Immunocytochemistry of Rabbit PAK6 antibody. Cell Type: Raji cells. Fixation: formalin fixed paraffin embedded. Antigen retrieval: not required. Primary antibody: PAK6 antibody at 10 µg/mL for 1 h at RT. Secondary antibody: Peroxidase rabbit secondary antibody at 1:10,000 for 45 min at RT. Localization: PAK6 is cytoplasmic. Staining: PAK6 is stained brown with hematoxylin purple counterstain.



Immunofluorescence Microscopy

Immunofluorescence Microscopy of PAK6 antibody. Cell Type: Raji cells. Fixation: 0.5% PFA. Antigen retrieval: not required. Primary antibody: PAK6 antibody at 10 µg/mL for 1 h at RT. Secondary antibody: Fluorescein rabbit secondary antibody at 1:10,000 for 45 min at RT. Localization: PAK6 is cytoplasmic. Staining: PAK6 as red fluorescent signal.



Western Blot

Western Blot of PAK6 antibody. Lane A: Raji lysate at 1 µg/ml. Lane B: Raji lysate at 2 µg/ml. Lane C: Raji lysate at 4 µg/ml. Load: 35 µg per lane. Primary antibody: PAK6 antibody at designated concentrations for overnight at 4°C. Secondary antibody: Peroxidase rabbit secondary antibody at 1:10,000 for 45 min at RT. Block: 5% BLOTTO overnight at 4°C. Predicted/Observed size: 25 kDa, 75 kDa for Rabbit IgG. Other band(s): PAK6 splice variants and isoforms.

Disclaimer

This product is for research use only and is not intended for therapeutic or diagnostic applications. Please contact a technical service representative for more information. All products of animal origin manufactured by Rockland Immunochemicals are derived from starting materials of North American origin. Collection was performed in United States Department of Agriculture (USDA) inspected facilities and all materials have been inspected and certified to be free of disease and suitable for exportation. All properties listed are typical characteristics and are not specifications. All suggestions and data are offered in good faith but without guarantee as conditions and methods of use of our products are beyond our control. All claims must be made within 30 days following the date of delivery. The prospective user must determine the suitability of our materials before adopting them on a commercial scale. Suggested uses of our products are not recommendations to use our products in violation of any patent or as a license under any patent of Rockland Immunochemicals, Inc. If you require a commercial license to use this material and do not have one, then return this material, unopened to: Rockland Inc., P.O. BOX 5199, Limerick, Pennsylvania, USA.