

Datasheet for 600-401-DH7**OTUD5 Antibody****Overview**

Description:	Anti-OTUD5 (RABBIT) Antibody - 600-401-DH7
Item No.:	600-401-DH7
Size:	100 µg
Applications:	ELISA, IF, IHC, WB
Reactivity:	Human, Mouse, Rat
Host Species:	Rabbit

Product Details

Background:	OTUD5 is a member of the OTU (ovarian tumor) domain-containing cysteine protease superfamily. The OTU domain confers deubiquitinase activity and OTUD5 has been shown to suppress the type I interferon (IFN-I)-dependent innate immune response by cleaving the polyubiquitin chain from TRAF3, an essential type I interferon adaptor protein. Cleavage results in disassociation of TRAF3 from a downstream signaling complex containing TBK1 and the disruption of the IFN-I signaling cascade, indicating that OTUD5 acts as a negative regulator of innate immune responses. It has been suggested that by suppressing IFN-I production, OTUD5 may function to inhibit the emergence of certain autoimmune disorders such as systemic lupus erythematosus. Multiple isoforms of OTUD5 are known to exist.
Synonyms:	OTUD5 Antibody, DUBA, OTU domain-containing protein 5, Deubiquitinating enzyme A, DUBA
Host Species:	Rabbit
Clonality:	Polyclonal
Format:	IgG

Target Details

Gene Name:	OTUD5
Reactivity:	Human, Mouse, Rat
Immunogen Type:	Conjugated Peptide

Immunogen: Anti-OTUD5 antibody was prepared from whole rabbit serum produced by repeated immunizations with a 13 amino acid synthetic peptide near the C-terminus of the human OTUD5.

Purity/Specificity: Anti-OTUD5 Antibody was affinity purified from monospecific antiserum by immunoaffinity chromatography. Cross reactivity with OTUD5 from other sources has not been determined.

Relevant Links:

- [UniProtKB - Q96G74](#)
- [GeneID - 55593](#)
- [NCBI - EAW50723](#)

Application Details

Tested Applications: ELISA, IF, IHC, WB

Application Note: Anti-OTUD5 Antibody has been tested for use in ELISA, Western Blotting, Immunohistochemistry and Immunofluorescence. Specific conditions for reactivity should be optimized by the end user. Expect a band at approximately 61 kDa in Western Blots of specific cell lysates and tissues.

Assay Dilutions: All assays should be optimized by the user. Recommended dilutions (if any) may be listed below.

ELISA: 1:10,000 - 1:20,000

IF: 20 µg/mL

IHC: 2.5 µg/mL

WB: 1-2 µg/mL

Formulation

Physical State: Liquid (sterile filtered)

Concentration: 1.0mg/ml by UV absorbance at 280 nm

Buffer: 0.01 M Sodium Phosphate, 0.25 M Sodium Chloride, pH 7.2

Preservative: 0.02% (w/v) Sodium Azide

Stabilizer: None

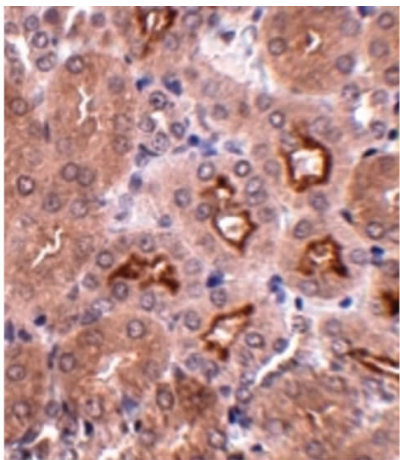
Shipping & Handling

Shipping Condition: Dry Ice

Storage Condition: Store vial at -20° C prior to opening. Aliquot contents and freeze at -20° C or below for extended storage. Avoid cycles of freezing and thawing. Centrifuge product if not completely clear after standing at room temperature. This product is stable for several weeks at 4° C as an undiluted liquid. Dilute only prior to immediate use.

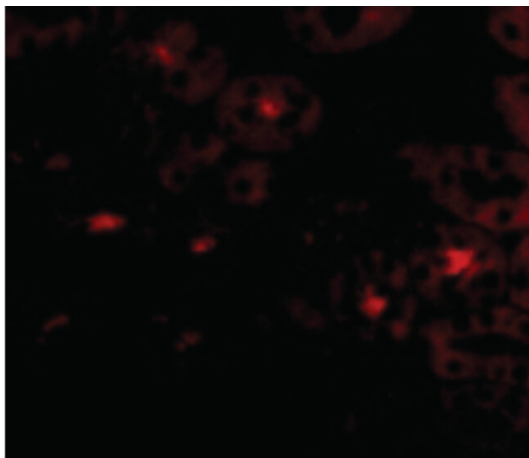
Expiration: Expiration date is one (1) year from date of receipt.

Images



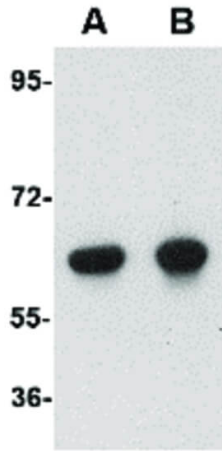
Immunohistochemistry

Immunohistochemistry of OTUD5 antibody. Tissue: Mouse kidney tissue. Fixation: formalin fixed paraffin embedded. Antigen retrieval: not required. Primary antibody: OTUD5 antibody at 2.5 µg/mL for 1 h at RT. Secondary antibody: Peroxidase rabbit secondary antibody at 1:10,000 for 45 min at RT. Localization: OTUD5 is nuclear and occasionally cytoplasmic. Staining: OTUD5 as a precipitated red signal.



Immunofluorescence Microscopy

Immunofluorescence Microscopy of OTUD5 antibody. Tissue: Human kidney cells. Fixation: 0.5% PFA. Antigen retrieval: not required. Primary antibody: OTUD5 antibody at 20 µg/mL for 1 h at RT. Secondary antibody: Fluorescein rabbit secondary antibody at 1:10,000 for 45 min at RT. Staining: OTUD5 as a red fluorescent signal.

**Western Blot**

Western Blot of OTUD5 antibody. Lane A: Human kidney lysate at 1 $\mu\text{g}/\text{mL}$. Lane B: Human kidney lysate at 2 $\mu\text{g}/\text{mL}$.

Load: 35 μg per lane. Secondary antibody: Peroxidase rabbit secondary antibody at 1:10,000 for 45 min at RT. Block: 5% BLOTTO overnight at 4°C. Predicted/Observed size: 60.6 kDa, ~60 kDa for OTUD5

Disclaimer

This product is for research use only and is not intended for therapeutic or diagnostic applications. Please contact a technical service representative for more information. All products of animal origin manufactured by Rockland Immunochemicals are derived from starting materials of North American origin. Collection was performed in United States Department of Agriculture (USDA) inspected facilities and all materials have been inspected and certified to be free of disease and suitable for exportation. All properties listed are typical characteristics and are not specifications. All suggestions and data are offered in good faith but without guarantee as conditions and methods of use of our products are beyond our control. All claims must be made within 30 days following the date of delivery. The prospective user must determine the suitability of our materials before adopting them on a commercial scale. Suggested uses of our products are not recommendations to use our products in violation of any patent or as a license under any patent of Rockland Immunochemicals, Inc. If you require a commercial license to use this material and do not have one, then return this material, unopened to: Rockland Inc., P.O. BOX 5199, Limerick, Pennsylvania, USA.