

Datasheet for 600-401-DH6**OTUD4 Antibody****Overview**

Description:	Anti-OTUD4 (RABBIT) Antibody - 600-401-DH6
Item No.:	600-401-DH6
Size:	100 µg
Applications:	ELISA, IF, IHC, WB
Reactivity:	Human, Mouse, Rat
Host Species:	Rabbit

Product Details

Background:	OTUD4, also known as HIV-1 induced protein HIN-1, is a member of the OTU (ovarian tumor) domain containing cysteine protease superfamily, in which the OUT domain generally confers deubiquitinase activity. At least three isoforms of OTUD4 are known to exist, and the smallest of these isoforms are only expressed in HIV-1-infected cells (provided by RefSeq).
Synonyms:	OTUD4 Antibody, HIN1, DUBA6, HSHIN1, HIN1, KIAA1046, OTU domain-containing protein 4, HIV-1-induced protein HIN-1
Host Species:	Rabbit
Clonality:	Polyclonal
Format:	IgG

Target Details

Gene Name:	OTUD4
Reactivity:	Human, Mouse, Rat
Immunogen Type:	Conjugated Peptide
Immunogen:	Anti-OTUD4 antibody was prepared from whole rabbit serum produced by repeated immunizations with an 18 amino acid synthetic peptide near the C-terminus of human OTUD4.
Purity/Specificity:	Anti-OTUD4 Antibody was affinity purified from monospecific antiserum by immunoaffinity chromatography. This antibody is predicted to not cross-react with other members of the OTUD family.

Relevant Links:	<ul style="list-style-type: none">• UniProtKB - Q01804• GeneID - 54726• NCBI - NP_001096123
------------------------	---

Application Details

Tested Applications:	ELISA, IF, IHC, WB
Application Note:	Anti-OTUD4 Antibody has been tested for use in ELISA, Western Blotting, Immunocytochemistry and Immunofluorescence. Specific conditions for reactivity should be optimized by the end user. Expect a band at approximately 124 kDa in Western Blots of specific cell lysates and tissues.
Assay Dilutions:	All assays should be optimized by the user. Recommended dilutions (if any) may be listed below.
ELISA:	1:2,500 - 1:5,000
IF:	20 µg/mL
WB:	0.25-5 µg/mL

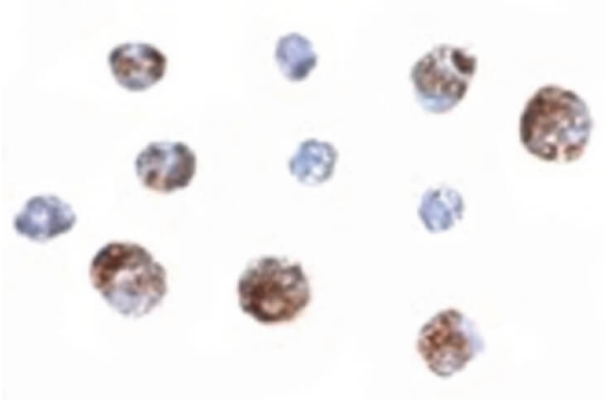
Formulation

Physical State:	Liquid (sterile filtered)
Concentration:	1 mg/mL by UV absorbance at 280 nm
Buffer:	0.01 M Sodium Phosphate, 0.25 M Sodium Chloride, pH 7.2
Preservative:	0.02% (w/v) Sodium Azide
Stabilizer:	None

Shipping & Handling

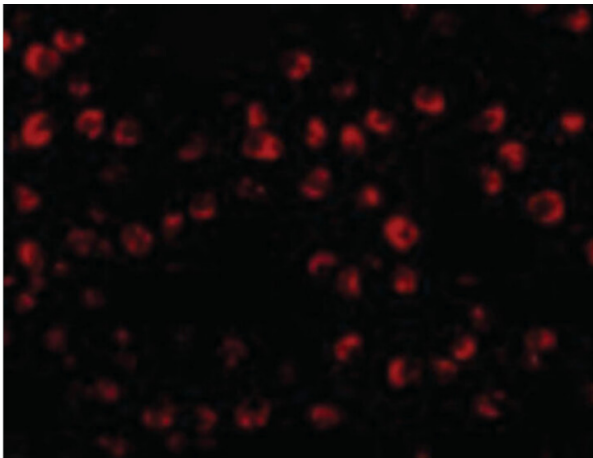
Shipping Condition:	Dry Ice
Storage Condition:	Store vial at -20° C prior to opening. Aliquot contents and freeze at -20° C or below for extended storage. Avoid cycles of freezing and thawing. Centrifuge product if not completely clear after standing at room temperature. This product is stable for several weeks at 4° C as an undiluted liquid. Dilute only prior to immediate use.
Expiration:	Expiration date is one (1) year from date of receipt.

Images



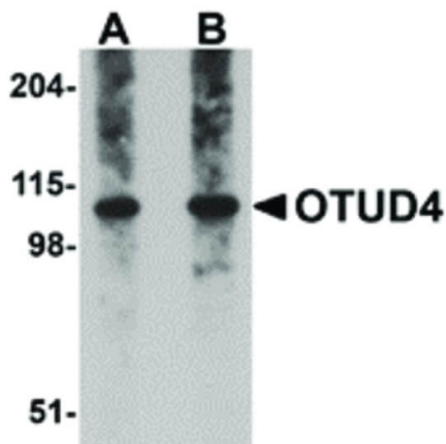
Immunohistochemistry

Immunocytochemistry of OTUD4 antibody. Tissue: Daudi cells. Fixation: formalin fixed paraffin embedded. Antigen retrieval: not required. Primary antibody: OTUD4 antibody at 2.5 $\mu\text{g}/\text{mL}$ for 1 h at RT. Secondary antibody: Peroxidase rabbit secondary antibody at 1:10,000 for 45 min at RT. Localization: OTUD4 is nuclear and occasionally cytoplasmic. Staining: OTUD4 as precipitated brown with blue counterstain.



Immunofluorescence Microscopy

Immunofluorescence Microscopy of OTUD4 antibody. Tissue: Daudi cells. Fixation: 0.5% PFA. Antigen retrieval: not required. Primary antibody: OTUD4 antibody at 20 $\mu\text{g}/\text{mL}$ for 1 h at RT. Secondary antibody: Fluorescein rabbit secondary antibody at 1:10,000 for 45 min at RT. Localization: OTUD4 is nuclear and occasionally cytoplasmic. Staining: OTUD4 as red fluorescent signal.



Western Blot

Western Blot of OTUD4 antibody. Lane 1: Daudi cell lysate with OTUD4 antibody at 0.25 $\mu\text{g}/\text{mL}$. Lane 2: Daudi cell lysate with OTUD4 antibody at 0.5 $\mu\text{g}/\text{mL}$. Load: 35 μg per lane. Secondary antibody: Peroxidase rabbit secondary antibody at 1:10,000 for 45 min at RT. Block: 5% BLOTTO overnight at 4°C. Predicted/Observed size: 124/163kDa, 110 kDa for OTUD4. Other band(s): OTUD4 splice variants and isoforms.

Disclaimer

This product is for research use only and is not intended for therapeutic or diagnostic applications. Please contact a technical service representative for more information. All products of animal origin manufactured by Rockland Immunochemicals are derived from starting materials of North American origin. Collection was performed in United States Department of Agriculture (USDA) inspected facilities and all materials have been inspected and certified to be free of disease and suitable for exportation. All properties listed are typical characteristics and are not specifications. All suggestions and data are offered in good faith but without guarantee as conditions and methods of use of our products are beyond our control. All claims must be made within 30 days following the date of delivery. The prospective user must determine the suitability of our materials before adopting them on a commercial scale. Suggested uses of our products are not recommendations to use our products in violation of any patent or as a license under any patent of Rockland Immunochemicals, Inc. If you require a commercial license to use this material and do not have one, then return this material, unopened to: Rockland Inc., P.O. BOX 5199, Limerick, Pennsylvania, USA.