

Datasheet for 600-401-DG4

OGFOD2 Antibody

Overview

Description:	Anti-OGFOD2 (RABBIT) Antibody - 600-401-DG4
Item No.:	600-401-DG4
Size:	100 µg
Applications:	ELISA, WB
Reactivity:	Human, Mouse, Rat
Host Species:	Rabbit

Product Details

Background:	OGFOD2 is a member of the 2-OG-Fe(II) dioxygenase family which plays an important role in ischemic survival and stress. Like the related protein OGFOD1, OGFOD2 is an oxidoreductase containing a Prolyl 4-hydroxylase alpha subunit. Little is known about the function of OGFOD2, but its similarity to OGFOD1 suggests that it is a novel stress granule component that may play an important proapoptotic role in the regulation of translation and HRI-mediated phosphorylation of eIF2alpha in cells.
Synonyms:	OGFOD2 Antibody, 2-oxoglutarate and iron-dependent oxygenase domain-containing protein 2
Host Species:	Rabbit
Clonality:	Polyclonal
Format:	IgG

Target Details

Gene Name:	OGFOD2
Reactivity:	Human, Mouse, Rat
Immunogen Type:	Conjugated Peptide
Immunogen:	Anti-OGFOD2 antibody was prepared from whole rabbit serum produced by repeated immunizations with a 17 amino acid synthetic peptide near the internal region of human OGFOD2.

Purity/Specificity: Anti-OGFOD2 Antibody was affinity purified from monospecific antiserum by immunoaffinity chromatography. OGFOD2 antibody is predicted to not cross-react with other TPA1 protein family members. At least three isoforms are known to exist; this antibody will only detect the two larger isoforms.

Relevant Links:

- [UniProtKB - Q6N063](#)
- [GeneID - 79676](#)
- [NCBI - NP_078899](#)

Application Details

Tested Applications: ELISA, WB

Application Note: Anti-OGFOD2 Antibody has been tested for use in ELISA and Western Blotting. Specific conditions for reactivity should be optimized by the end user. Expect a band at approximately 38 kDa in Western Blots of specific cell lysates and tissues.

Assay Dilutions: All assays should be optimized by the user. Recommended dilutions (if any) may be listed below.

ELISA: 1:10,000

WB: 1 µg/mL

Formulation

Physical State: Liquid (sterile filtered)

Concentration: 1 mg/mL by UV absorbance at 280 nm

Buffer: 0.01 M Sodium Phosphate, 0.25 M Sodium Chloride, pH 7.2

Preservative: 0.02% (w/v) Sodium Azide

Stabilizer: None

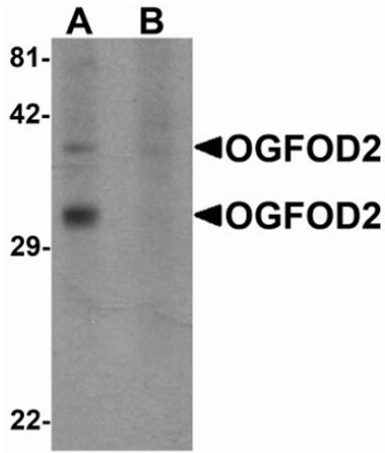
Shipping & Handling

Shipping Condition: Dry Ice

Storage Condition: Store vial at -20° C prior to opening. Aliquot contents and freeze at -20° C or below for extended storage. Avoid cycles of freezing and thawing. Centrifuge product if not completely clear after standing at room temperature. This product is stable for several weeks at 4° C as an undiluted liquid. Dilute only prior to immediate use.

Expiration: Expiration date is one (1) year from date of receipt.

Images



Western Blot

Western blot analysis of OGFOD2.

Load: 293 cell lysate.

Primary Antibody: OGFOD2 antibody at 1 µg/mL in (A) the absence and (B) the presence of blocking peptide.

Disclaimer

This product is for research use only and is not intended for therapeutic or diagnostic applications. Please contact a technical service representative for more information. All products of animal origin manufactured by Rockland Immunochemicals are derived from starting materials of North American origin. Collection was performed in United States Department of Agriculture (USDA) inspected facilities and all materials have been inspected and certified to be free of disease and suitable for exportation. All properties listed are typical characteristics and are not specifications. All suggestions and data are offered in good faith but without guarantee as conditions and methods of use of our products are beyond our control. All claims must be made within 30 days following the date of delivery. The prospective user must determine the suitability of our materials before adopting them on a commercial scale. Suggested uses of our products are not recommendations to use our products in violation of any patent or as a license under any patent of Rockland Immunochemicals, Inc. If you require a commercial license to use this material and do not have one, then return this material, unopened to: Rockland Inc., P.O. BOX 5199, Limerick, Pennsylvania, USA.