

**Datasheet for 600-401-DF0****Nudel Antibody****Overview**

<b>Description:</b>	Anti-Nudel (RABBIT) Antibody - 600-401-DF0
<b>Item No.:</b>	600-401-DF0
<b>Size:</b>	100 µg
<b>Applications:</b>	ELISA, IF, IHC, WB
<b>Reactivity:</b>	Human, Mouse
<b>Host Species:</b>	Rabbit

**Product Details**

<b>Background:</b>	Nudel was initially discovered as a protein homologous to <i>Aspergillus</i> NUDE and that associated with Lis1 and polyprotein complex cytoplasmic dynein, both of which have been linked to neuronal development and migration. It was later shown to be a substrate of cdk5, a kinase known to be critical during neuronal migration; phosphorylation of Nudel by cdk5 affects its localization in neurons and affects neuritic morphology. It is thought that together with Lis1, Nudel regulates cytoplasmic dynein, a large polyprotein complex, in neuronal migration and mitosis through direct interactions. Similar interactions are thought to also play a role in membrane traffic in other cells as disruption of Nudel expression through RNA interference perturbed normal endomembrane flux and resulted in the fragmentation of the Golgi apparatus.
<b>Synonyms:</b>	Nudel Antibody, EOPA, NDE2, NUDEL, MITAP1, NDE1L1, EOPA, Nuclear distribution protein nudE-like 1, Mitosin-associated protein 1, Protein Nudel
<b>Host Species:</b>	Rabbit
<b>Clonality:</b>	Polyclonal
<b>Format:</b>	IgG

**Target Details**

<b>Gene Name:</b>	NDEL1
<b>Reactivity:</b>	Human, Mouse
<b>Immunogen Type:</b>	Conjugated Peptide

<b>Immunogen:</b>	Anti-Nudel antibody was prepared from whole rabbit serum produced by repeated immunizations with a peptide corresponding to 15 amino acids near the N-terminus of human Nudel.
<b>Purity/Specificity:</b>	Anti-Nudel Antibody was affinity purified from monospecific antiserum by immunoaffinity chromatography. Cross reactivity with Nudel from other sources has not been determined.
<b>Relevant Links:</b>	<ul style="list-style-type: none"><li>• <a href="#">UniProtKB - Q9GZM8</a></li><li>• <a href="#">GeneID - 81565</a></li><li>• <a href="#">NCBI - AAF97497</a></li></ul>

## Application Details

<b>Tested Applications:</b>	ELISA, IF, IHC, WB
<b>Application Note:</b>	Anti-Nudel Antibody has been tested for use in ELISA, Western Blotting, Immunocytochemistry and Immunofluorescence. Specific conditions for reactivity should be optimized by the end user. Expect a band at approximately 38 kDa in Western Blots of specific cell lysates and tissues.
<b>Assay Dilutions:</b>	All assays should be optimized by the user. Recommended dilutions (if any) may be listed below.
<b>ELISA:</b>	1:5,000 - 1:20,000
<b>IF:</b>	10 µg/mL
<b>WB:</b>	.5-2 µg/mL

## Formulation

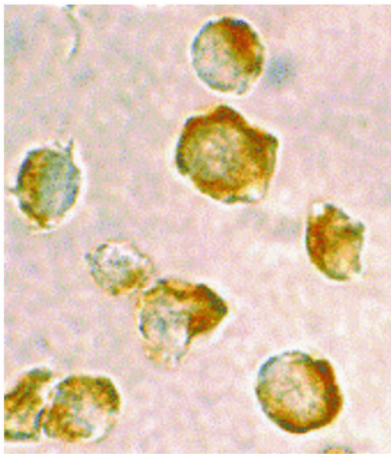
<b>Physical State:</b>	Liquid (sterile filtered)
<b>Concentration:</b>	1 mg/mL by UV absorbance at 280 nm
<b>Buffer:</b>	0.01 M Sodium Phosphate, 0.25 M Sodium Chloride, pH 7.2
<b>Preservative:</b>	0.02% (w/v) Sodium Azide
<b>Stabilizer:</b>	None

## Shipping & Handling

<b>Shipping Condition:</b>	Dry Ice
----------------------------	---------

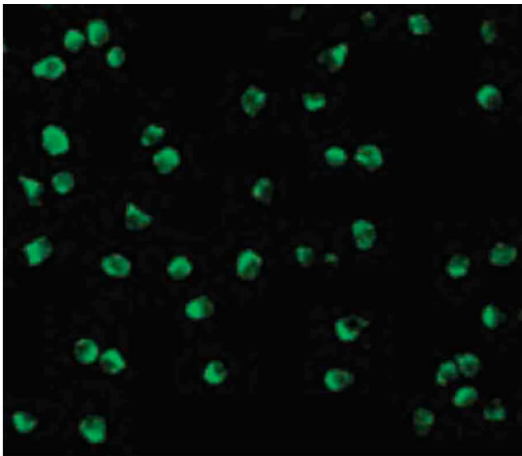
<b>Storage Condition:</b>	Store vial at -20° C prior to opening. Aliquot contents and freeze at -20° C or below for extended storage. Avoid cycles of freezing and thawing. Centrifuge product if not completely clear after standing at room temperature. This product is stable for several weeks at 4° C as an undiluted liquid. Dilute only prior to immediate use.
<b>Expiration:</b>	Expiration date is one (1) year from date of receipt.

## Images



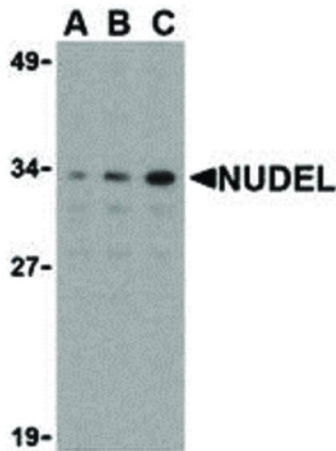
### Immunohistochemistry

Immunocytochemistry of Nudel antibody. Cell Type: Jurkat cells. Fixation: formalin fixed paraffin embedded. Antigen retrieval: not required. Primary antibody: Nudel antibody at 2 µg/mL for 1 h at RT. Secondary antibody: Peroxidase rabbit secondary antibody at 1:10,000 for 45 min at RT. Localization: Nudel is chromosomal and cytoplasmic. Staining: Nudel is stained with Mallory's trichome stain.



### Immunofluorescence Microscopy

Immunofluorescence Microscopy of Nudel antibody. Tissue: Jurkat cells. Fixation: 0.5% PFA. Antigen retrieval: not required. Primary antibody: Nudel antibody at 10 µg/mL for 1 h at RT. Secondary antibody: Fluorescein rabbit secondary antibody at 1:10,000 for 45 min at RT. Localization: Nudel is chromosomal and cytoplasmic. Staining: Nudel as green fluorescent signal.

**Western Blot**

Western Blot of Nudel antibody. Lane A: Jurkat whole cell lysate at 0.5 µg/ml. Lane B: Jurkat whole cell lysate at 1 µg/ml. Lane C: Jurkat whole cell lysate at 2 µg/ml. Load: 35 µg per lane. Secondary antibody: Peroxidase rabbit secondary antibody at 1:10,000 for 45 min at RT. Block: 5% BLOTTO overnight at 4°C. Predicted/Observed size: 38 kDa, 33 kDa for Nudel. Other band(s): Nudel splice variants and isoforms.

**Disclaimer**

This product is for research use only and is not intended for therapeutic or diagnostic applications. Please contact a technical service representative for more information. All products of animal origin manufactured by Rockland Immunochemicals are derived from starting materials of North American origin. Collection was performed in United States Department of Agriculture (USDA) inspected facilities and all materials have been inspected and certified to be free of disease and suitable for exportation. All properties listed are typical characteristics and are not specifications. All suggestions and data are offered in good faith but without guarantee as conditions and methods of use of our products are beyond our control. All claims must be made within 30 days following the date of delivery. The prospective user must determine the suitability of our materials before adopting them on a commercial scale. Suggested uses of our products are not recommendations to use our products in violation of any patent or as a license under any patent of Rockland Immunochemicals, Inc. If you require a commercial license to use this material and do not have one, then return this material, unopened to: Rockland Inc., P.O. BOX 5199, Limerick, Pennsylvania, USA.