

Datasheet for 600-401-DD6**NOSTRIN Antibody****Overview**

Description:	Anti-NOSTRIN (RABBIT) Antibody - 600-401-DD6
Item No.:	600-401-DD6
Size:	100 µg
Applications:	ELISA, IF, IHC, WB
Reactivity:	Human, Mouse, Rat
Host Species:	Rabbit

Product Details

Background:	NOSTRIN, also known as endothelial nitric oxide synthase traffic inducer, is a member of the Pombe Cdc15 homology (PCH) family of proteins which may function as the modulator of the subcellular localization and activity of endothelial nitric oxide synthase (eNOS) (1,2). It decreases NOS3 activity by inducing its translocation away from the plasma membrane (3). NOSTRIN typically exists as a trimer and is expressed in the vascular endothelial cells of highly vascularized tissues such as placenta, lung, kidney and heart. NOSTRIN is necessary for proper vascular development in zebrafish and postnatal retinal angiogenesis in mice (4,5).
Synonyms:	Nitric oxide synthase traffic inducer, eNOS-trafficking inducer, Nitric oxide synthase trafficker, BM247 homolog, DaIP2
Host Species:	Rabbit
Clonality:	Polyclonal
Format:	IgG

Target Details

Gene Name:	NOSTRIN
Reactivity:	Human, Mouse, Rat
Immunogen Type:	Conjugated Peptide
Immunogen:	Anti-NOSTRIN antibody was prepared from whole rabbit serum produced by repeated immunizations with a 17 amino acid peptide near the C-terminus of human NOSTRIN.

Purity/Specificity: Anti-NOSTRIN antibody was affinity purified from monospecific antiserum by immunoaffinity chromatography. NOSTRIN antibody is human, mouse and rat reactive. At least four isoforms are known to exist; this antibody will detect all four isoforms.

Relevant Links:

- [UniProtKB - Q8IV19](#)
- [GeneID - 115677](#)
- [NCBI - NP_443178](#)

Application Details

Tested Applications: ELISA, IF, IHC, WB

Application Note: Anti-NOSTRIN Antibody has been tested for use in ELISA, immunohistochemistry, immunofluorescence, and Western Blotting. Specific conditions for reactivity should be optimized by the end user. Expect a band at approximately 58 kDa in Western Blots of specific cell lysates and tissues.

Assay Dilutions: All assays should be optimized by the user. Recommended dilutions (if any) may be listed below.

ELISA: 1:10,000 - 1:20,000

IF: 20 µg/mL

IHC: 5 µg/mL

WB: 1-2 µg/mL

Formulation

Physical State: Liquid (sterile filtered)

Concentration: 1 mg/mL by UV absorbance at 280 nm

Buffer: 0.01 M Sodium Phosphate, 0.25 M Sodium Chloride, pH 7.2

Preservative: 0.02% (w/v) Sodium Azide

Stabilizer: None

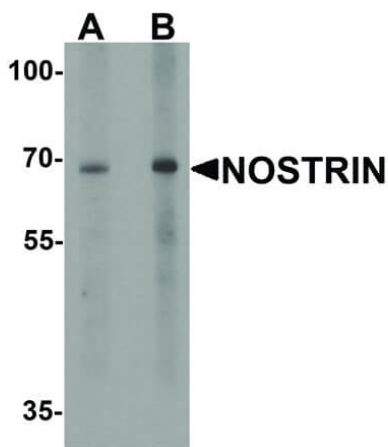
Shipping & Handling

Shipping Condition: Dry Ice

Storage Condition: Store vial at -20° C prior to opening. Aliquot contents and freeze at -20° C or below for extended storage. Avoid cycles of freezing and thawing. Centrifuge product if not completely clear after standing at room temperature. This product is stable for several weeks at 4° C as an undiluted liquid. Dilute only prior to immediate use.

Expiration: Expiration date is one (1) year from date of receipt.

Images



Western Blot

Western Blot of Rabbit anti-NOSTRIN antibody. Lane A: SW480 cell lysate at 1 µg/mL. Lane B: SW480 cell lysate at 2 µg/mL. Primary antibody: NOSTRIN antibody overnight at 4°C. Secondary antibody: Goat anti-Rabbit HRP secondary antibody. Block: 5% BLOTTO. Predicted/Observed size: 47/53/56/62 kDa, 68 kDa for NOSTRIN.

Disclaimer

This product is for research use only and is not intended for therapeutic or diagnostic applications. Please contact a technical service representative for more information. All products of animal origin manufactured by Rockland Immunochemicals are derived from starting materials of North American origin. Collection was performed in United States Department of Agriculture (USDA) inspected facilities and all materials have been inspected and certified to be free of disease and suitable for exportation. All properties listed are typical characteristics and are not specifications. All suggestions and data are offered in good faith but without guarantee as conditions and methods of use of our products are beyond our control. All claims must be made within 30 days following the date of delivery. The prospective user must determine the suitability of our materials before adopting them on a commercial scale. Suggested uses of our products are not recommendations to use our products in violation of any patent or as a license under any patent of Rockland Immunochemicals, Inc. If you require a commercial license to use this material and do not have one, then return this material, unopened to: Rockland Inc., P.O. BOX 5199, Limerick, Pennsylvania, USA.