

**Datasheet for 600-401-DA0****NETO1 Antibody****Overview**

<b>Description:</b>	Anti-NETO1 (RABBIT) Antibody - 600-401-DA0
<b>Item No.:</b>	600-401-DA0
<b>Size:</b>	100 µg
<b>Applications:</b>	ELISA, IF, IHC, WB
<b>Reactivity:</b>	Human, Mouse, Rat
<b>Host Species:</b>	Rabbit

**Product Details**

<b>Background:</b>	Neuropilin and tolloid-like protein 1 (NETO1) is involved in the development and/or maintenance of neuronal circuitry. It is a type I transmembrane protein that is expressed in the brain and retina. NETO1 contains one LDL-receptor class A domain and two CUB domains and is either membrane-bound or secreted. It has three alternatively spliced isoforms, the first two of which are retina-specific and the third of which is found in both retina and brain tissue. Furthermore, as an accessory subunit of the neuronal N-methyl-D-aspartate receptor (NMDAR), it regulates long-term NMDA receptor-dependent synaptic plasticity and cognition, at least in the context of spatial learning and memory.
<b>Synonyms:</b>	NETO1 Antibody, BCTL1, BTCL1, Neuropilin and tolloid-like protein 1, Brain-specific transmembrane protein containing 2 CUB and 1 LDL-receptor class A domains protein 1
<b>Host Species:</b>	Rabbit
<b>Clonality:</b>	Polyclonal
<b>Format:</b>	IgG

**Target Details**

<b>Gene Name:</b>	NETO1
<b>Reactivity:</b>	Human, Mouse, Rat
<b>Immunogen Type:</b>	Conjugated Peptide
<b>Immunogen:</b>	Anti-NETO1 antibody was prepared from whole rabbit serum produced by repeated immunizations with an 18 amino acid synthetic peptide near the C-terminus of human NETO1.

**Purity/Specificity:** Anti-NETO1 Antibody was affinity purified from monospecific antiserum by immunoaffinity chromatography. NETO1 antibody is predicted to not cross-react with other NETO protein family members.

**Relevant Links:**

- [UniProtKB - Q8TDF5](#)
- [GeneID - 81832](#)
- [NCBI - NP\\_694821](#)

## Application Details

**Tested Applications:** ELISA, IF, IHC, WB

**Application Note:** Anti-NETO1 Antibody has been tested for use in ELISA, Western Blotting, Immunohistochemistry and Immunofluorescence. Specific conditions for reactivity should be optimized by the end user. Expect a band at approximately 60 kDa in Western Blots of specific cell lysates and tissues.

**Assay Dilutions:** All assays should be optimized by the user. Recommended dilutions (if any) may be listed below.

**ELISA:** 1:10,000 - 1:20,000

**IF:** 20 µg/mL

**IHC:** 2.5 µg/mL

**WB:** 1-2 µg/mL

## Formulation

**Physical State:** Liquid (sterile filtered)

**Concentration:** 1.0 mg/ml by UV absorbance at 280 nm

**Buffer:** 0.01 M Sodium Phosphate, 0.25 M Sodium Chloride, pH 7.2

**Preservative:** 0.02% (w/v) Sodium Azide

**Stabilizer:** None

## Shipping & Handling

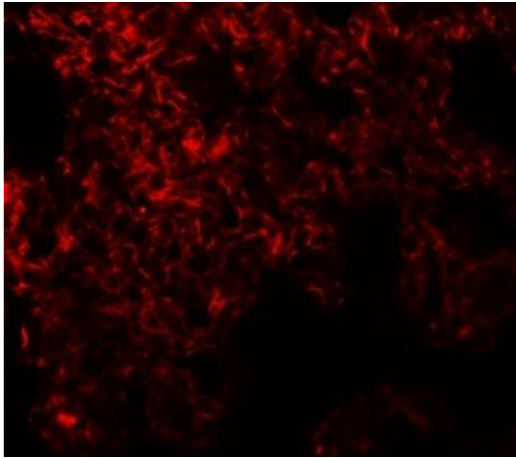
**Shipping Condition:** Dry Ice

**Storage Condition:** Store vial at -20° C prior to opening. Aliquot contents and freeze at -20° C or below for extended storage. Avoid cycles of freezing and thawing. Centrifuge product if not completely clear after standing at room temperature. This product is stable for several weeks at 4° C as an undiluted liquid. Dilute only prior to immediate use.

**Expiration:** Expiration date is one (1) year from date of receipt.

---

## Images

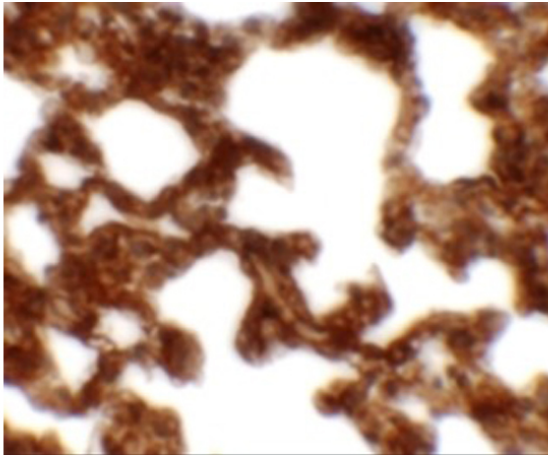


### **Immunofluorescence Microscopy**

Immunofluorescence of NETO1.

Tissue: rat lung tissue.

Primary Antibody: NETO1 antibody at 20 µg/mL.

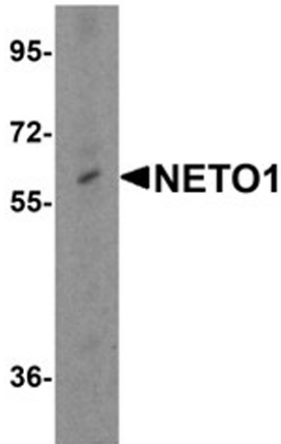


### **Immunohistochemistry**

Immunohistochemistry of NETO1.

Tissue: rat lung tissue.

Primary Antibody: NETO1 antibody at 2.5 µg/mL.

**Western Blot**

Western blot analysis of NETO1.

Load: human brain tissue lysate.

Primary Antibody: NETO1 antibody at 0.25 µg/mL.

**Disclaimer**

This product is for research use only and is not intended for therapeutic or diagnostic applications. Please contact a technical service representative for more information. All products of animal origin manufactured by Rockland Immunochemicals are derived from starting materials of North American origin. Collection was performed in United States Department of Agriculture (USDA) inspected facilities and all materials have been inspected and certified to be free of disease and suitable for exportation. All properties listed are typical characteristics and are not specifications. All suggestions and data are offered in good faith but without guarantee as conditions and methods of use of our products are beyond our control. All claims must be made within 30 days following the date of delivery. The prospective user must determine the suitability of our materials before adopting them on a commercial scale. Suggested uses of our products are not recommendations to use our products in violation of any patent or as a license under any patent of Rockland Immunochemicals, Inc. If you require a commercial license to use this material and do not have one, then return this material, unopened to: Rockland Inc., P.O. BOX 5199, Limerick, Pennsylvania, USA.