

## Datasheet for 600-401-D35

**EphrinB phospho Y298 Antibody****Overview**

<b>Description:</b>	Anti-Ephrin B pY298 (RABBIT) Antibody - 600-401-D35
<b>Item No.:</b>	600-401-D35
<b>Size:</b>	100 µL
<b>Applications:</b>	WB
<b>Reactivity:</b>	Human, Rat
<b>Host Species:</b>	Rabbit

**Product Details**

**Background:** EphrinB Antibody detects EphrinB proteins which are thought to play key roles in cellular functions as diverse as neuronal migration and blood vessel development. EphrinB molecules expressed at the membrane surface bind to the EphB family receptors on target cells during cell-to-cell contact. This interaction leads to cell signaling in the target cell but also generates a reverse signal in the cell expressing EphrinB on its surface. This reverse signaling event is thought to be critical for vessel maturation and neuronal development. Importantly, tyrosine phosphorylation of EphrinB is thought to be a critical component of this reverse signaling event. Recent work suggests that phosphorylation of a specific EphrinB residue (Tyr298) plays a key role in EphrinB signaling. Anti-EphrinB pT298 Antibody is ideal for investigators involved in Cell Migration, Cell Division, Cell Signaling and Neuroscience.

<b>Synonyms:</b>	Ephrin type-B receptor 2, EPH-like kinase 5, EK5
<b>Host Species:</b>	Rabbit
<b>Clonality:</b>	Polyclonal
<b>Format:</b>	IgG

**Target Details**

<b>Gene Name:</b>	EPHB2
<b>Reactivity:</b>	Human, Rat
<b>PTM Specificity:</b>	Phosphorylation

<b>Immunogen Type:</b>	Conjugated Peptide
<b>Immunogen:</b>	Anti-EphrinB pY298 Antibody was produced in rabbit by repeated immunizations with synthetic phospho-peptide corresponding to amino acid residues surrounding Tyr298 of Xenopus EphrinB conjugated to KLH.
<b>Purity/Specificity:</b>	Anti-EphrinB pY298 antibody is directed against rat Ephrin. Anti-EphrinB pY298 antibody was prepared from monospecific antiserum by immunoaffinity chromatography using phospho peptide coupled to agarose beads followed by solid phase adsorption(s) against non-phospho peptide and non-specific peptide to remove any unwanted reactivities. Assay by immunoelectrophoresis resulted in a single precipitin arc against anti-Rabbit Serum. This antibody is specific for phosphorylated EphrinB. Minimal reactivity occurs against non-phosphorylated EphrinB pY298. Reactivity is completely blocked by treatment with lambda-phosphatase. Reactivity against EphrinB occurs from human and rat sources. However, reactivity is also expected against the following species based on 100% sequence homology: bovine, canine, chicken, human, mouse, non-human primate, Xenopus, and zebra fish.
<b>Relevant Links:</b>	<ul style="list-style-type: none"><li>• <a href="#">UniProtKB - P28693</a></li><li>• <a href="#">GenelD - 396513</a></li><li>• <a href="#">NCBI - NP_996834.1</a></li></ul>

## Application Details

<b>Tested Applications:</b>	WB
<b>Application Note:</b>	Anti-EphrinB pY298 Antibody is tested for use in ELISA and Western Blotting. Specific conditions for reactivity should be optimized by the end user. Expect a band of approximately 46 kDa in size corresponding to EphrinB proteins phosphorylated at Tyr298 in the appropriate cell lysate or extract.
<b>Assay Dilutions:</b>	All assays should be optimized by the user. Recommended dilutions (if any) may be listed below.
<b>ELISA:</b>	1:10,000
<b>WB:</b>	1:1000

## Formulation

<b>Physical State:</b>	Liquid
<b>Buffer:</b>	0.01 M HEPES, 0.15 M Sodium Chloride, pH 7.5
<b>Stabilizer:</b>	0.1 mg/ml Bovine Serum Albumin (BSA) - IgG and Protease free, 50% (v/v) Glycerol

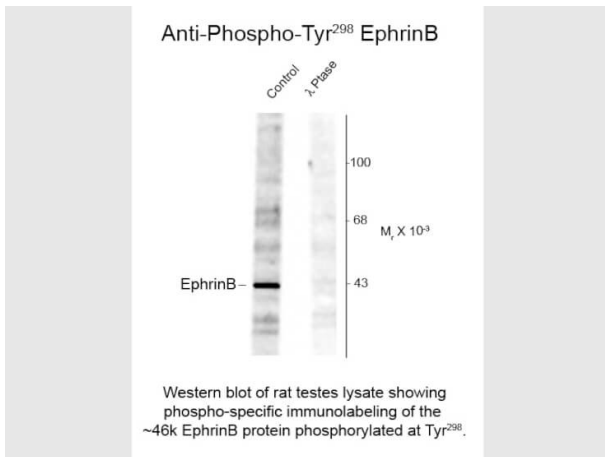
## Shipping & Handling

**Shipping Condition:** Dry Ice

**Storage Condition:** Store vial at -20° C prior to opening. This product is stable at 4° C as an undiluted liquid. For extended storage, aliquot contents and freeze at -20° C or below. Avoid cycles of freezing and thawing. Dilute only prior to immediate use.

**Expiration:** Expiration date is one (1) year from date of receipt.

## Images



### Western Blot

Western Blot of Anti-EphrinB pT298 (Rabbit) Antibody. Lane 1: rat testes. Lane 2: rat testes incubated in λ-Ptase (1200 units for 30 min). Load: 10 µg per lane. Primary antibody: EphrinB pT298 antibody at 1:400 for overnight at 4°C. Secondary antibody: IRDye800™ rabbit secondary antibody at 1:10,000 for 45 min at RT. Block: 5% BLOTTO overnight at 4°C. Predicted/Observed size: ~46kDa/~46kDa for EphrinB phosphorylated at Tyr298. Other band(s): none.

## Disclaimer

This product is for research use only and is not intended for therapeutic or diagnostic applications. Please contact a technical service representative for more information. All products of animal origin manufactured by Rockland Immunochemicals are derived from starting materials of North American origin. Collection was performed in United States Department of Agriculture (USDA) inspected facilities and all materials have been inspected and certified to be free of disease and suitable for exportation. All properties listed are typical characteristics and are not specifications. All suggestions and data are offered in good faith but without guarantee as conditions and methods of use of our products are beyond our control. All claims must be made within 30 days following the date of delivery. The prospective user must determine the suitability of our materials before adopting them on a commercial scale. Suggested uses of our products are not recommendations to use our products in violation of any patent or as a license under any patent of Rockland Immunochemicals, Inc. If you require a commercial license to use this material and do not have one, then return this material, unopened to: Rockland Inc., P.O. BOX 5199, Limerick, Pennsylvania, USA.