

**Datasheet for 600-401-CZ7****NELF Antibody****Overview**

<b>Description:</b>	Anti-NELF (RABBIT) Antibody - 600-401-CZ7
<b>Item No.:</b>	600-401-CZ7
<b>Size:</b>	100 µg
<b>Applications:</b>	ELISA, IF, IHC, WB
<b>Reactivity:</b>	Human, Mouse, Rat
<b>Host Species:</b>	Rabbit

**Product Details**

<b>Background:</b>	NELF (nasal embryonic luteinizing hormone-releasing hormone factor) is a 530 amino acid transcription factor involved in the migration of LHRH neurons, outgrowth of olfactory axons and suppression of transcription elongation. NELF is found in the peripheral and central nervous system during embryonic development, and is highly expressed in adult testis, kidney and brain. Known to couple NMDA receptor signaling to the nucleus, NELF knockdown impaired GnRH neuronal migration of NLT cells in vitro and the gene encoding NELF has been linked to the development of Idiopathic hypogonadotropic hypogonadism (IHH), a disorder resulting in impaired pubertal maturation and reproductive function.
<b>Synonyms:</b>	NELF Antibody, HH9, NELF, NMDA receptor synaptonuclear signaling and neuronal migration factor, Nasal embryonic luteinizing hormone-releasing hormone factor, Nasal embryonic LHRH factor
<b>Host Species:</b>	Rabbit
<b>Clonality:</b>	Polyclonal
<b>Format:</b>	IgG

**Target Details**

<b>Gene Name:</b>	NSMF
<b>Reactivity:</b>	Human, Mouse, Rat
<b>Immunogen Type:</b>	Conjugated Peptide

<b>Immunogen:</b>	Anti- NELF antibody was prepared from whole rabbit serum produced by repeated immunizations with a 17 amino acid peptide near the internal region of human NELF.
<b>Purity/Specificity:</b>	Anti-NELF Antibody was affinity purified from monospecific antiserum by immunoaffinity chromatography. Cross reactivity with NELF from other sources has not been determined.
<b>Relevant Links:</b>	<ul style="list-style-type: none"><li>• <a href="#">UniProtKB - Q6X4W1</a></li><li>• <a href="#">GeneID - 26012</a></li><li>• <a href="#">NCBI - NP_056352</a></li></ul>

## Application Details

<b>Tested Applications:</b>	ELISA, IF, IHC, WB
<b>Application Note:</b>	Anti-NELF Antibody has been tested for use in ELISA, Western Blotting, Immunohistochemistry and Immunofluorescence. Specific conditions for reactivity should be optimized by the end user. Expect a band at approximately 60 kDa in Western Blots of specific cell lysates and tissues.
<b>Assay Dilutions:</b>	All assays should be optimized by the user. Recommended dilutions (if any) may be listed below.
<b>ELISA:</b>	1:10,000 - 1:20,000
<b>IF:</b>	20 µg/mL
<b>IHC:</b>	5 µg/mL
<b>WB:</b>	1-2 µg/mL

## Formulation

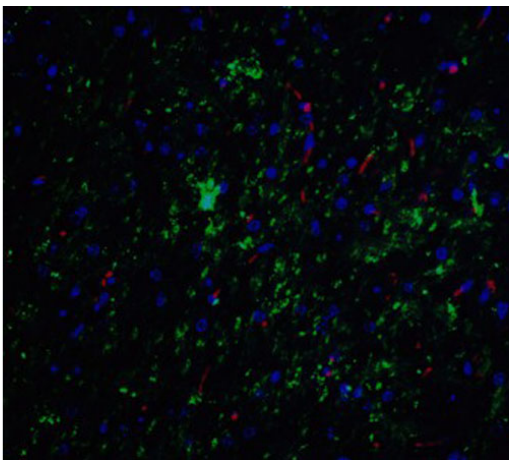
<b>Physical State:</b>	Liquid (sterile filtered)
<b>Concentration:</b>	1 mg/mL by UV absorbance at 280 nm
<b>Buffer:</b>	0.01 M Sodium Phosphate, 0.25 M Sodium Chloride, pH 7.2
<b>Preservative:</b>	0.02% (w/v) Sodium Azide
<b>Stabilizer:</b>	None

## Shipping & Handling

<b>Shipping Condition:</b>	Dry Ice
----------------------------	---------

<b>Storage Condition:</b>	Store vial at -20° C prior to opening. Aliquot contents and freeze at -20° C or below for extended storage. Avoid cycles of freezing and thawing. Centrifuge product if not completely clear after standing at room temperature. This product is stable for several weeks at 4° C as an undiluted liquid. Dilute only prior to immediate use.
<b>Expiration:</b>	Expiration date is one (1) year from date of receipt.

## Images



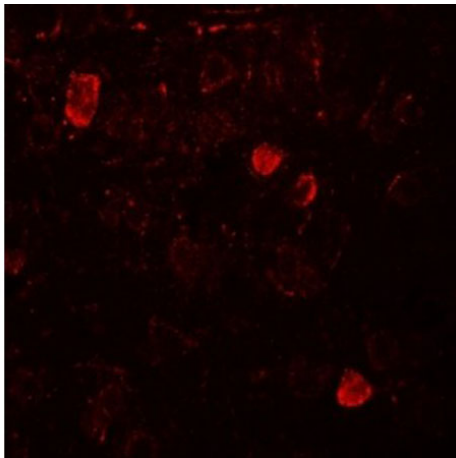
### Immunofluorescence Microscopy

Immunofluorescence of NELF.

Tissue: mouse brain tissue.

Primary Antibody: NELF Antibody at 20 µg/mL.

Staining: NELF antibody (green); Phalloidin staining (red);  
DAPI staining (blue).

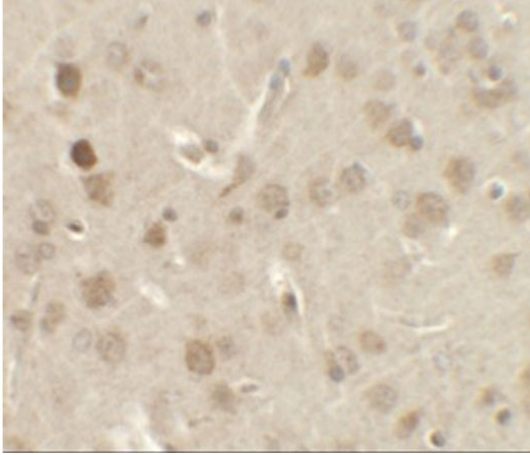


### Immunofluorescence Microscopy

Immunofluorescence of NELF.

Tissue: rat brain tissue.

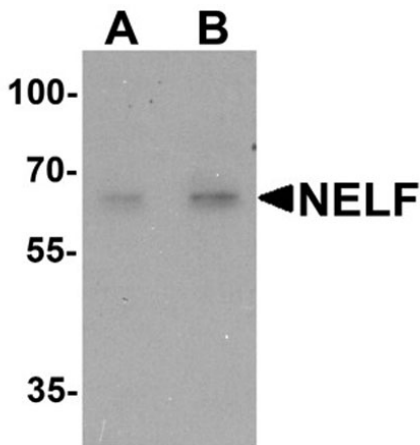
Primary Antibody: NELF antibody at 20 µg/ml.

**Immunohistochemistry**

Immunohistochemistry of NELF.

Tissue: rat brain tissue.

Primary Antibody: NELF antibody at 2.5 µg/ml.

**Western Blot**

Western blot analysis of NELF.

Load: Hela cell lysate.

Primary Antibody: NELF antibody at (A) 1 and (B) 2 µg/mL.

**Disclaimer**

This product is for research use only and is not intended for therapeutic or diagnostic applications. Please contact a technical service representative for more information. All products of animal origin manufactured by Rockland Immunochemicals are derived from starting materials of North American origin. Collection was performed in United States Department of Agriculture (USDA) inspected facilities and all materials have been inspected and certified to be free of disease and suitable for exportation. All properties listed are typical characteristics and are not specifications. All suggestions and data are offered in good faith but without guarantee as conditions and methods of use of our products are beyond our control. All claims must be made within 30 days following the date of delivery. The prospective user must determine the suitability of our materials before adopting them on a commercial scale. Suggested uses of our products are not recommendations to use our products in violation of any patent or as a license under any patent of Rockland Immunochemicals, Inc. If you require a commercial license to use this material and do not have one, then return this material, unopened to: Rockland Inc., P.O. BOX 5199, Limerick, Pennsylvania, USA.