

Datasheet for 600-401-CY6**NALP8 Antibody****Overview**

Description:	Anti-NALP8 (RABBIT) Antibody - 600-401-CY6
Item No.:	600-401-CY6
Size:	100 µg
Applications:	ELISA, WB
Reactivity:	Human
Host Species:	Rabbit

Product Details

Background:	NALP proteins are cytoplasmic proteins that form a subfamily within the larger CATERPILLER family and are thought to play a crucial role in cell proliferation and reproduction. Like all other NALP family members, NALP8 has a C-terminal leucine-rich repeat (LRR) region, an N-terminal Pyrin domain (PYD) followed by a NACHT domain, and a NACHT-associated domain. It maps to chromosome 19q13.42 and is thought to be expressed in testis and ovary, suggesting that NALP8 may be involved in reproduction. Surprisingly, NALP8 seems to be universal in mammals except for rodents, suggesting that the gene may have been lost during evolution.
Synonyms:	NALP8 Antibody, PAN4, NALP8, NOD16, CLR19.2, PAN4, NACHT, LRR and PYD domains-containing protein 8, Nucleotide-binding oligomerization domain protein 16
Host Species:	Rabbit
Clonality:	Polyclonal
Format:	IgG

Target Details

Gene Name:	NLRP8
Reactivity:	Human
Immunogen Type:	Conjugated Peptide
Immunogen:	Anti-NALP8 antibody was prepared from whole rabbit serum produced by repeated immunizations with a 16 amino acid synthetic peptide near the N-terminus of human NALP8.

Purity/Specificity: Anti-NALP8 Antibody was affinity purified from monospecific antiserum by immunoaffinity chromatography. Cross reactivity with NALP8 from other sources has not been determined.

Relevant Links:

- [UniProtKB - Q86W28](#)
- [GeneID - 126205](#)
- [NCBI - NP_789781](#)

Application Details

Tested Applications: ELISA, WB

Application Note: Anti-NALP8 Antibody has been tested for use in ELISA and Western Blotting. Specific conditions for reactivity should be optimized by the end user. Expect a band at approximately 119 kDa in Western Blots of specific cell lysates and tissues.

Assay Dilutions: All assays should be optimized by the user. Recommended dilutions (if any) may be listed below.

ELISA: 1:10,000

WB: 1 µg/mL

Formulation

Physical State: Liquid (sterile filtered)

Concentration: 1 mg/mL by UV absorbance at 280 nm

Buffer: 0.01 M Sodium Phosphate, 0.25 M Sodium Chloride, pH 7.2

Preservative: 0.02% (w/v) Sodium Azide

Stabilizer: None

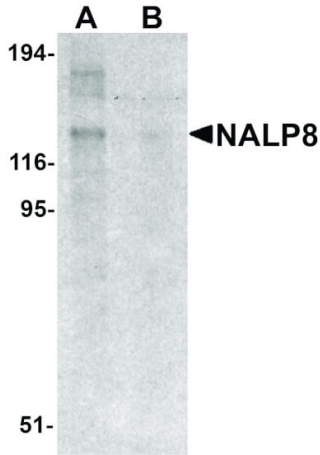
Shipping & Handling

Shipping Condition: Dry Ice

Storage Condition: Store vial at -20° C prior to opening. Aliquot contents and freeze at -20° C or below for extended storage. Avoid cycles of freezing and thawing. Centrifuge product if not completely clear after standing at room temperature. This product is stable for several weeks at 4° C as an undiluted liquid. Dilute only prior to immediate use.

Expiration: Expiration date is one (1) year from date of receipt.

Images



Western Blot

Western Blot of NALP8 antibody. Lane 1: human colon tissue lysate with NALP8 antibody at 1 $\mu\text{g}/\text{mL}$ in the absence of blocking peptide. Lane 2: human colon tissue lysate with NALP8 antibody at 1 $\mu\text{g}/\text{mL}$ in the presence of blocking peptide. Secondary antibody: Peroxidase rabbit secondary antibody at 1:10,000 for 45 min at RT. Block: 5% BLOTTO overnight at 4°C. Predicted/Observed size: 119 kDa, 119 kDa for NALP8. Other band(s): NALP8 splice variants and isoforms.

Disclaimer

This product is for research use only and is not intended for therapeutic or diagnostic applications. Please contact a technical service representative for more information. All products of animal origin manufactured by Rockland Immunochemicals are derived from starting materials of North American origin. Collection was performed in United States Department of Agriculture (USDA) inspected facilities and all materials have been inspected and certified to be free of disease and suitable for exportation. All properties listed are typical characteristics and are not specifications. All suggestions and data are offered in good faith but without guarantee as conditions and methods of use of our products are beyond our control. All claims must be made within 30 days following the date of delivery. The prospective user must determine the suitability of our materials before adopting them on a commercial scale. Suggested uses of our products are not recommendations to use our products in violation of any patent or as a license under any patent of Rockland Immunochemicals, Inc. If you require a commercial license to use this material and do not have one, then return this material, unopened to: Rockland Inc., P.O. BOX 5199, Limerick, Pennsylvania, USA.