

Datasheet for 600-401-CY4**NALP6 Antibody****Overview**

Description:	Anti-NALP6 (RABBIT) Antibody - 600-401-CY4
Item No.:	600-401-CY4
Size:	100 µg
Applications:	ELISA, IF, WB
Reactivity:	Human
Host Species:	Rabbit

Product Details

Background:	NALP proteins include the apoptosis regulator APAF1 (apoptotic protease activating factor 1) and mammalian NOD-LRR proteins and are thought to be involved in inflammation and reproduction. NALP6, also known as PYPAF5, is highly expressed in granulocytes and T cells and co-localizes with the PYRIN-CARD protein ASC. Co-expression of NALP6 with ASC results in a synergistic activation of NF-κB and activated caspase-1-dependent cytokine processing, suggesting that NALP6 functions in immune cells to coordinate the transduction of pro-inflammatory signals.
Synonyms:	NALP6 Antibody, AVR, NAVR, PAN3, NALP6, PYPAF5, CLR11.4, NAVR/AVR, NACHT, LRR and PYD domains-containing protein 6, PYRIN-containing APAF1-like protein 5
Host Species:	Rabbit
Clonality:	Polyclonal
Format:	IgG

Target Details

Gene Name:	NLRP6
Reactivity:	Human
Immunogen Type:	Conjugated Peptide
Immunogen:	Anti-NALP6 antibody was prepared from whole rabbit serum produced by repeated immunizations with a 16 amino acid synthetic peptide near the N-terminus of human NALP6.

Purity/Specificity: Anti-NALP6 Antibody was affinity purified from monospecific antiserum by immunoaffinity chromatography. Cross reactivity with NALP6 from other sources has not been determined.

Relevant Links:

- [UniProtKB - P59044](#)
- [GeneID - 171389](#)
- [NCBI - NP_612202](#)

Application Details

Tested Applications: ELISA, IF, WB

Application Note: Anti-NALP6 Antibody has been tested for use in ELISA, Western Blotting and Immunofluorescence. Specific conditions for reactivity should be optimized by the end user. Expect a band at approximately 99 kDa in Western Blots of specific cell lysates and tissues.

Assay Dilutions: All assays should be optimized by the user. Recommended dilutions (if any) may be listed below.

ELISA: 1:10,000

IF: 20 µg/mL

WB: 1 µg/mL

Formulation

Physical State: Liquid (sterile filtered)

Concentration: 1 mg/mL by UV absorbance at 280 nm

Buffer: 0.01 M Sodium Phosphate, 0.25 M Sodium Chloride, pH 7.2

Preservative: 0.02% (w/v) Sodium Azide

Stabilizer: None

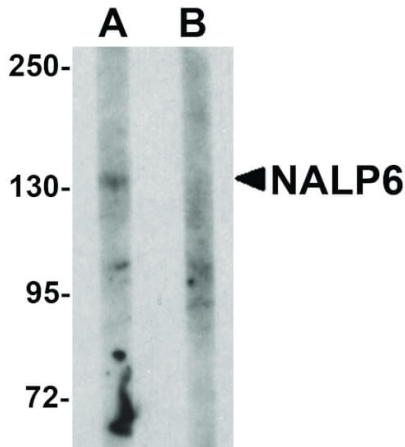
Shipping & Handling

Shipping Condition: Dry Ice

Storage Condition: Store vial at -20° C prior to opening. Aliquot contents and freeze at -20° C or below for extended storage. Avoid cycles of freezing and thawing. Centrifuge product if not completely clear after standing at room temperature. This product is stable for several weeks at 4° C as an undiluted liquid. Dilute only prior to immediate use.

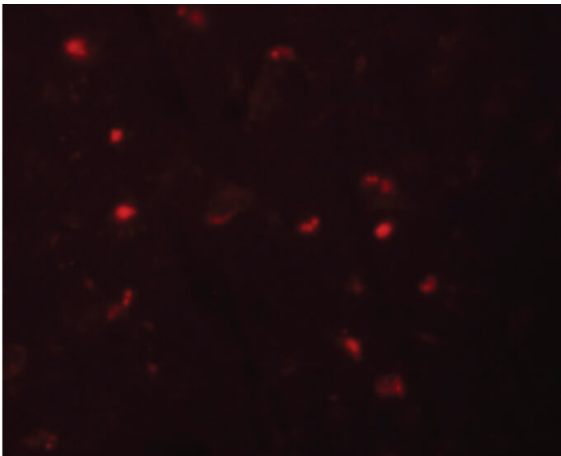
Expiration: Expiration date is one (1) year from date of receipt.

Images



Western Blot

Western Blot of NALP6 antibody. Lane 1: Mouse brain tissue lysate with NALP6 antibody at 1 µg/mL in the absence of blocking peptide. Lane 2: Mouse brain tissue lysate with NALP6 antibody at 1 µg/mL in the presence of blocking peptide. Secondary antibody: Peroxidase rabbit secondary antibody at 1:10,000 for 45 min at RT. Block: 5% BLOTTO overnight at 4°C. Predicted/Observed size: 99 kDa, 130 kDa for NALP6. Other band(s): NALP6 splice variants and isoforms.



Immunofluorescence Microscopy

Immunofluorescence Microscopy of NALP6 antibody. Tissue: Human brain tissue. Fixation: 0.5% PFA. Antigen retrieval: not required. Primary antibody: NALP6 antibody at 20 µg/mL for 1 h at RT. Secondary antibody: Fluorescein rabbit secondary antibody at 1:10,000 for 45 min at RT. Localization: NALP6 is nuclear and cytoplasmic and is a membrane protein. Staining: NALP6 as red fluorescent signal.

Disclaimer

This product is for research use only and is not intended for therapeutic or diagnostic applications. Please contact a technical service representative for more information. All products of animal origin manufactured by Rockland Immunochemicals are derived from starting materials of North American origin. Collection was performed in United States Department of Agriculture (USDA) inspected facilities and all materials have been inspected and certified to be free of disease and suitable for exportation. All properties listed are typical characteristics and are not specifications. All suggestions and data are offered in good faith but without guarantee as conditions and methods of use of our products are beyond our control. All claims must be made within 30 days following the date of delivery. The prospective user must determine the suitability of our materials before adopting them on a commercial scale. Suggested uses of our products are not recommendations to use our products in violation of any patent or as a license under any patent of Rockland Immunochemicals, Inc. If you require a commercial license to use this material and do not have one, then return this material, unopened to: Rockland Inc., P.O. BOX 5199, Limerick, Pennsylvania, USA.