

Datasheet for 600-401-CY3**NALP5 Antibody****Overview**

Description:	Anti-NALP5 (RABBIT) Antibody - 600-401-CY3
Item No.:	600-401-CY3
Size:	100 µg
Applications:	ELISA, IF, IHC, WB
Reactivity:	Human, Mouse, Rat
Host Species:	Rabbit

Product Details

Background:	NALP proteins include the apoptosis regulator APAF1 (apoptotic protease activating factor 1) and mammalian NOD-LRR proteins and are thought to be involved in inflammation and reproduction. NALP5, also known as MATER, is a maternal gene required for early embryonic development in mice. Increased NALP5 expression was observed in two neuronal injury models, and transient expression of recombinant NALP5 in neurons induced caspase-3 activation and apoptosis, suggesting that NALP5 also plays a role in caspase activation and apoptosis in injured neurons, and may thus represent a novel target for therapeutic treatment in neurodegenerative disorders.
Synonyms:	NALP5 Antibody, MATER, NALP5, PAN11, PYPAF8, CLR19.8, MATER, NACHT, LRR and PYD domains-containing protein 5, Mater protein homolog
Host Species:	Rabbit
Clonality:	Polyclonal
Format:	IgG

Target Details

Gene Name:	NLRP5
Reactivity:	Human, Mouse, Rat
Immunogen Type:	Conjugated Peptide
Immunogen:	Anti-NALP5 antibody was prepared from whole rabbit serum produced by repeated immunizations with a 14 amino acid synthetic peptide near the C-terminus of human NALP5.

Purity/Specificity: Anti-NALP5 Antibody was affinity purified from monospecific antiserum by immunoaffinity chromatography. Cross reactivity with NALP5 from other sources has not been determined.

Relevant Links:

- [UniProtKB - P59047](#)
- [GeneID - 126206](#)
- [NCBI - NP_703148](#)

Application Details

Tested Applications: ELISA, IF, IHC, WB

Application Note: Anti-NALP5 Antibody has been tested for use in ELISA, Western Blotting, Immunohistochemistry and Immunofluorescence. Specific conditions for reactivity should be optimized by the end user. Expect a band at approximately 134 kDa in Western Blots of specific cell lysates and tissues.

Assay Dilutions: All assays should be optimized by the user. Recommended dilutions (if any) may be listed below.

ELISA: 1:10,000

IF: 20 µg/mL

IHC: 10 µg/mL

WB: 1 µg/mL

Formulation

Physical State: Liquid (sterile filtered)

Concentration: 1 mg/mL by UV absorbance at 280 nm

Buffer: 0.01 M Sodium Phosphate, 0.25 M Sodium Chloride, pH 7.2

Preservative: 0.02% (w/v) Sodium Azide

Stabilizer: None

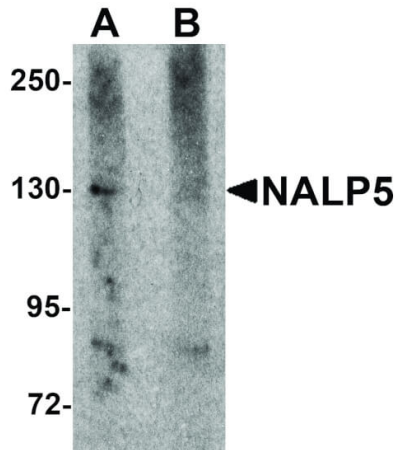
Shipping & Handling

Shipping Condition: Dry Ice

Storage Condition: Store vial at -20° C prior to opening. Aliquot contents and freeze at -20° C or below for extended storage. Avoid cycles of freezing and thawing. Centrifuge product if not completely clear after standing at room temperature. This product is stable for several weeks at 4° C as an undiluted liquid. Dilute only prior to immediate use.

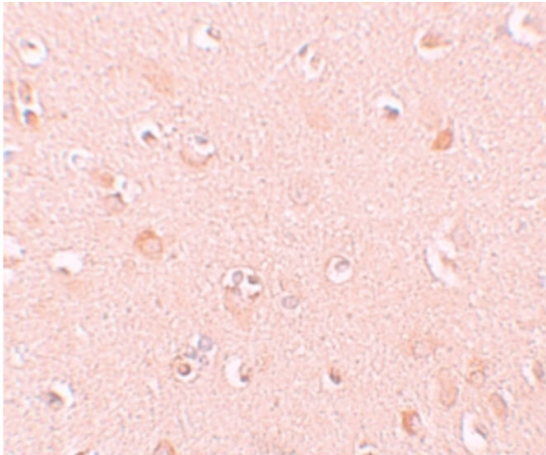
Expiration: Expiration date is one (1) year from date of receipt.

Images



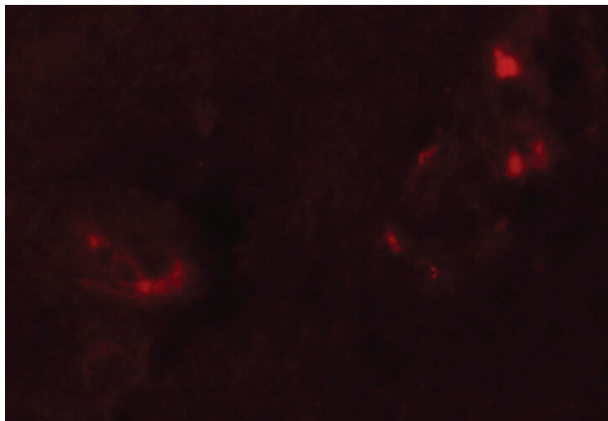
Western Blot

Western Blot of NALP5 antibody. Lane 1: Mouse brain tissue lysate with NALP5 antibody at 1 µg/mL in the absence of blocking peptide. Lane 2: Mouse brain tissue lysate with NALP5 antibody at 1 µg/mL in the presence of blocking peptide. Secondary antibody: Peroxidase rabbit secondary antibody at 1:10,000 for 45 min at RT. Block: 5% BLOTTO overnight at 4°C. Predicted/Observed size: 134 kDa, 130 kDa for NALP5. Other band(s): NALP5 splice variants and isoforms.



Immunohistochemistry

Immunohistochemistry of NALP5 antibody. Tissue: Human brain tissue. Fixation: formalin fixed paraffin embedded. Antigen retrieval: not required. Primary antibody: NALP5 antibody at 10 µg/mL for 1 h at RT. Secondary antibody: Peroxidase rabbit secondary antibody at 1:10,000 for 45 min at RT. Localization: NALP5 is nuclear and cytoplasmic. Staining: NALP5 as precipitated pink signal with blue nuclear counterstain.



Immunofluorescence Microscopy

Immunofluorescence Microscopy of NALP5 antibody.

Tissue: Human brain tissue. Fixation: 0.5% PFA. Antigen retrieval: not required. Primary antibody: NALP5 antibody at 20 µg/mL for 1 h at RT. Secondary antibody: Fluorescein rabbit secondary antibody at 1:10,000 for 45 min at RT.

Localization: NALP5 is nuclear and cytoplasmic. Staining: NALP5 as red fluorescent signal.

Disclaimer

This product is for research use only and is not intended for therapeutic or diagnostic applications. Please contact a technical service representative for more information. All products of animal origin manufactured by Rockland Immunochemicals are derived from starting materials of North American origin. Collection was performed in United States Department of Agriculture (USDA) inspected facilities and all materials have been inspected and certified to be free of disease and suitable for exportation. All properties listed are typical characteristics and are not specifications. All suggestions and data are offered in good faith but without guarantee as conditions and methods of use of our products are beyond our control. All claims must be made within 30 days following the date of delivery. The prospective user must determine the suitability of our materials before adopting them on a commercial scale. Suggested uses of our products are not recommendations to use our products in violation of any patent or as a license under any patent of Rockland Immunochemicals, Inc. If you require a commercial license to use this material and do not have one, then return this material, unopened to: Rockland Inc., P.O. BOX 5199, Limerick, Pennsylvania, USA.