

Datasheet for 600-401-CV7**MTERFD1 Antibody****Overview**

Description:	Anti-MTERFD1 (RABBIT) Antibody - 600-401-CV7
Item No.:	600-401-CV7
Size:	100 µg
Applications:	ELISA, IF, IHC, WB
Reactivity:	Human, Mouse
Host Species:	Rabbit

Product Details

Background:	Members of the mTERF (mitochondrial transcription termination factor) family, are mitochondrial proteins that are believed to be transcription termination factors. MTERFD1 is composed of three leucine zippers that form a three-stranded coiled-coil that binds to DNA. It binds promoter DNA and acts as a mitochondrial transcription regulator. It has been suggested that only the phosphorylated form of MTERFD1 has transcription termination activity. A closely related mTERF family member, MTERFD3, is believed to be involved in cell cycle regulation and cell growth by modulating mitochondrial transcription.
Synonyms:	MTERFD1 Antibody, CGI-12, mTERF3, mTERF domain-containing protein 1 mitochondrial, Mitochondrial transcription termination factor 3
Host Species:	Rabbit
Clonality:	Polyclonal
Format:	IgG

Target Details

Gene Name:	MTERF3
Reactivity:	Human, Mouse
Immunogen Type:	Conjugated Peptide
Immunogen:	Anti-MTERFD1 antibody was prepared from whole rabbit serum produced by repeated immunizations with a 17 amino acid peptide near the C-terminus of human MTERFD1.

Purity/Specificity: Anti-MTERFD1 Antibody was affinity purified from monospecific antiserum by immunoaffinity chromatography. At least three isoforms of MTERFD1 are known to exist. MTERFD1 antibody is predicted to not cross-react with other MTERFD protein family members.

Relevant Links:

- [UniProtKB - Q96E29](#)
- [GeneID - 51001](#)
- [NCBI - NP_057026](#)

Application Details

Tested Applications: ELISA, IF, IHC, WB

Application Note: Anti-MTERFD1 Antibody has been tested for use in ELISA, Western Blotting, Immunocytochemistry and Immunofluorescence. Specific conditions for reactivity should be optimized by the end user. Expect a band at approximately 48 kDa in Western Blots of specific cell lysates and tissues.

Assay Dilutions: All assays should be optimized by the user. Recommended dilutions (if any) may be listed below.

ELISA: 1:10,000

IF: 20 µg/mL

WB: 1 µg/mL

Formulation

Physical State: Liquid (sterile filtered)

Concentration: 1 mg/mL by UV absorbance at 280 nm

Buffer: 0.01 M Sodium Phosphate, 0.25 M Sodium Chloride, pH 7.2

Preservative: 0.02% (w/v) Sodium Azide

Stabilizer: None

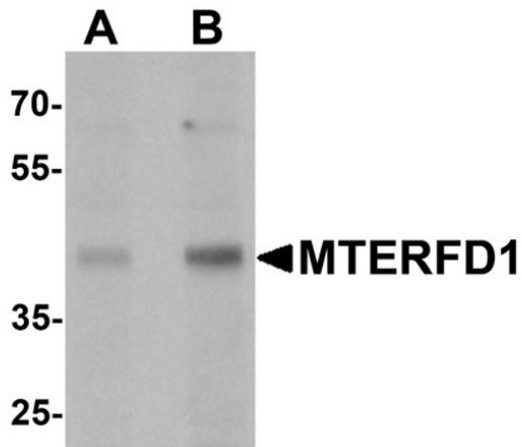
Shipping & Handling

Shipping Condition: Dry Ice

Storage Condition: Store vial at -20° C prior to opening. Aliquot contents and freeze at -20° C or below for extended storage. Avoid cycles of freezing and thawing. Centrifuge product if not completely clear after standing at room temperature. This product is stable for several weeks at 4° C as an undiluted liquid. Dilute only prior to immediate use.

Expiration: Expiration date is one (1) year from date of receipt.

Images

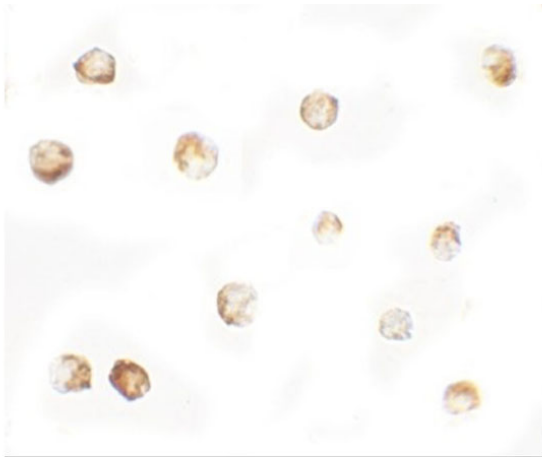


Western Blot

Western blot analysis of MTERFD1.

Load: 3T3 cell lysate.

Primary Antibody: MTERFD1 antibody at (A) 1 and (B) 2 $\mu\text{g/mL}$.

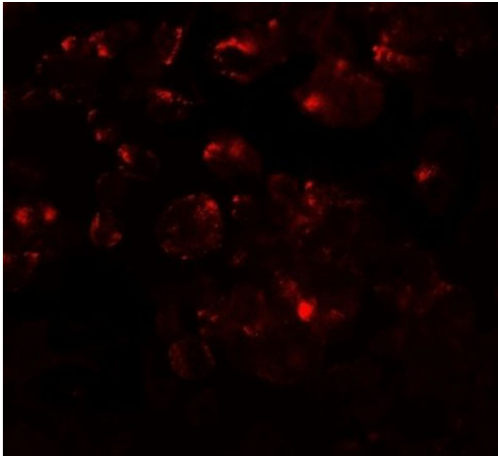


Immunocytochemistry

Immunocytochemistry of MTERFD1.

Cell: 3T3 cells.

Primary Antibody: MTERFD1 antibody at 5 $\mu\text{g/mL}$.

**Immunofluorescence Microscopy**

Immunofluorescence of MTERFD1.

Cell: 3T3 cells.

Primary Antibody: MTERFD1 antibody at 20 µg/mL.

Disclaimer

This product is for research use only and is not intended for therapeutic or diagnostic applications. Please contact a technical service representative for more information. All products of animal origin manufactured by Rockland Immunochemicals are derived from starting materials of North American origin. Collection was performed in United States Department of Agriculture (USDA) inspected facilities and all materials have been inspected and certified to be free of disease and suitable for exportation. All properties listed are typical characteristics and are not specifications. All suggestions and data are offered in good faith but without guarantee as conditions and methods of use of our products are beyond our control. All claims must be made within 30 days following the date of delivery. The prospective user must determine the suitability of our materials before adopting them on a commercial scale. Suggested uses of our products are not recommendations to use our products in violation of any patent or as a license under any patent of Rockland Immunochemicals, Inc. If you require a commercial license to use this material and do not have one, then return this material, unopened to: Rockland Inc., P.O. BOX 5199, Limerick, Pennsylvania, USA.