

Datasheet for 600-401-CV6**MTCH2 Antibody****Overview**

Description:	Anti-MTCH2 (RABBIT) Antibody - 600-401-CV6
Item No.:	600-401-CV6
Size:	100 µg
Applications:	ELISA, IF, IHC, WB
Reactivity:	Human, Mouse
Host Species:	Rabbit

Product Details

Background: Apoptosis plays a major role in normal organism development, tissue homeostasis, and removal of damaged cells. Disruption of this process has been implicated in a variety of diseases such as cancer. The Bcl-2 family of proteins is comprised of critical regulators of apoptosis that can be divided into two classes: those that inhibit apoptosis and those that promote cell death. MTCH2 is a member of the mitochondrial carrier protein family that catalyze the exchange of substrates across the inner mitochondrial membrane and is targeted by Bid, a pro-apoptotic Bcl-2 family member, in response to apoptotic signals, suggesting that MTCH2 may play a key role in the mitochondrial apoptosis pathway.

Synonyms:	MTCH2 Antibody, HSPC032, 2310034D24Rik, 4930539J07Rik, Mitochondrial carrier homolog 2
Host Species:	Rabbit
Clonality:	Polyclonal
Format:	IgG

Target Details

Gene Name:	Mtch2
Reactivity:	Human, Mouse
Immunogen Type:	Conjugated Peptide
Immunogen:	Anti-MTCH2 antibody was prepared from whole rabbit serum produced by repeated immunizations with a 15 amino acid synthetic peptide near the N-terminus of human MTCH2.

Purity/Specificity: Anti-MTCH2 Antibody was affinity purified from monospecific antiserum by immunoaffinity chromatography. Cross reactivity with MTCH2 from other sources has not been determined.

Relevant Links:

- [UniProtKB - Q791V5](#)
- [GeneID - 56428](#)
- [NCBI - NP_055157](#)

Application Details

Tested Applications: ELISA, IF, IHC, WB

Application Note: Anti-MTCH2 Antibody has been tested for use in ELISA, Western Blotting, Immunohistochemistry and Immunofluorescence. Specific conditions for reactivity should be optimized by the end user. Expect a band at approximately 33 kDa in Western Blots of specific cell lysates and tissues.

Assay Dilutions: All assays should be optimized by the user. Recommended dilutions (if any) may be listed below.

ELISA: 1:10,000

IF: 20 µg/mL

IHC: 5 µg/mL

WB: 1 µg/mL

Formulation

Physical State: Liquid (sterile filtered)

Concentration: 1 mg/mL by UV absorbance at 280 nm

Buffer: 0.01 M Sodium Phosphate, 0.25 M Sodium Chloride, pH 7.2

Preservative: 0.02% (w/v) Sodium Azide

Stabilizer: None

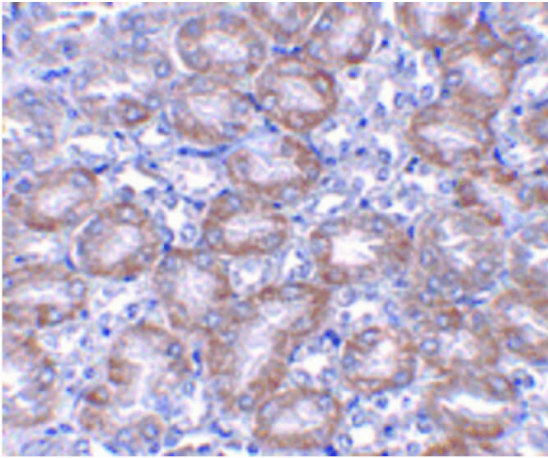
Shipping & Handling

Shipping Condition: Dry Ice

Storage Condition: Store vial at -20° C prior to opening. Aliquot contents and freeze at -20° C or below for extended storage. Avoid cycles of freezing and thawing. Centrifuge product if not completely clear after standing at room temperature. This product is stable for several weeks at 4° C as an undiluted liquid. Dilute only prior to immediate use.

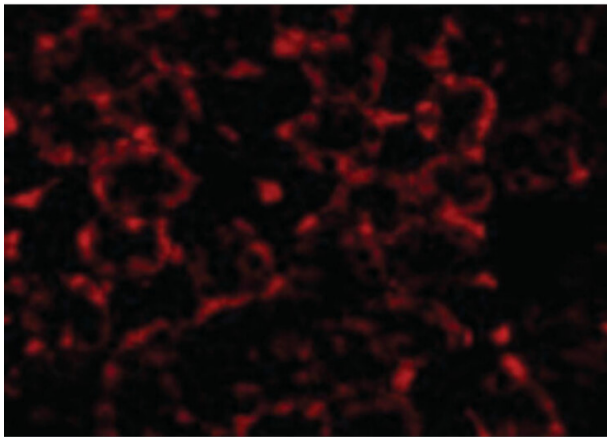
Expiration: Expiration date is one (1) year from date of receipt.

Images



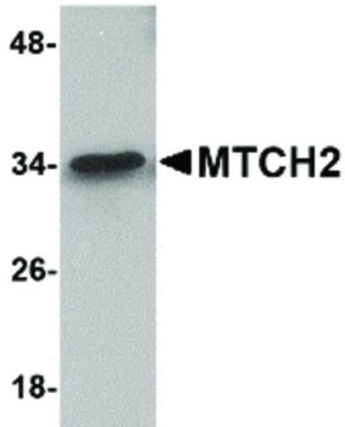
Immunohistochemistry

Immunohistochemistry of MTCH2 antibody. Tissue: Mouse kidney tissue. Fixation: formalin fixed paraffin embedded. Antigen retrieval: not required. Primary antibody: MTCH2 antibody at 5 $\mu\text{g}/\text{mL}$ for 1 h at RT. Secondary antibody: Peroxidase rabbit secondary antibody at 1:10,000 for 45 min at RT. Localization: MTCH2 is mitochondrial and a multipass membrane protein. Staining: MTCH2 as precipitated blue signal with brown counterstain.



Immunofluorescence Microscopy

Immunofluorescence Microscopy of MTCH2 antibody. Tissue: Mouse kidney cells. Fixation: 0.5% PFA. Antigen retrieval: not required. Primary antibody: MTCH2 antibody at 20 $\mu\text{g}/\text{mL}$ for 1 h at RT. Secondary antibody: Fluorescein rabbit secondary antibody at 1:10,000 for 45 min at RT. Localization: MTCH2 is mitochondrial and a multipass membrane protein. Staining: MTCH2 as red fluorescent signal.

**Western Blot**

Western Blot of MTCH2 antibody. Lane 1: 293 cell lysate with MTCH2 antibody at 1 $\mu\text{g}/\text{mL}$. Load: 35 μg per lane. Secondary antibody: Peroxidase rabbit secondary antibody at 1:10,000 for 45 min at RT. Block: 5% BLOTTO overnight at 4°C. Predicted/Observed size: 33 kDa, 34 kDa for MTCH2. Other band(s): none.

Disclaimer

This product is for research use only and is not intended for therapeutic or diagnostic applications. Please contact a technical service representative for more information. All products of animal origin manufactured by Rockland Immunochemicals are derived from starting materials of North American origin. Collection was performed in United States Department of Agriculture (USDA) inspected facilities and all materials have been inspected and certified to be free of disease and suitable for exportation. All properties listed are typical characteristics and are not specifications. All suggestions and data are offered in good faith but without guarantee as conditions and methods of use of our products are beyond our control. All claims must be made within 30 days following the date of delivery. The prospective user must determine the suitability of our materials before adopting them on a commercial scale. Suggested uses of our products are not recommendations to use our products in violation of any patent or as a license under any patent of Rockland Immunochemicals, Inc. If you require a commercial license to use this material and do not have one, then return this material, unopened to: Rockland Inc., P.O. BOX 5199, Limerick, Pennsylvania, USA.