

Datasheet for 600-401-CV5**MSI2 Antibody****Overview**

Description:	Anti-MSI2 (RABBIT) Antibody - 600-401-CV5
Item No.:	600-401-CV5
Size:	100 µg
Applications:	ELISA, IF, IHC, WB
Reactivity:	Human, Mouse, Rat
Host Species:	Rabbit

Product Details

Background:	Musashi2 (MSI2) is an RNA-binding protein that is highly expressed in precursor cells in the ventricular and subventricular zones of the developing mammalian CNS. Like the related MSI1, MSI2 has been suggested to be involved stem cell production and maintenance. MSI2 is the predominant MSI protein in hematopoietic stem cells, and its knockdown leads to reduced engraftment and depletion in vivo. Expression levels of MSI2 are elevated in myeloid leukemia cells lines, and MSI2 appears to cooperate with BCR-ABL1 to induce an aggressive leukemia; the level of MSI2 directly correlates with decreased survival in patients. MSI2 negatively regulates the asymmetric cell fate determinant NUMB, suggesting that this signaling pathway may provide future targets for future therapies.
Synonyms:	MSI2 Antibody, MSI2H, RNA-binding protein Musashi homolog 2, Musashi-2
Host Species:	Rabbit
Clonality:	Polyclonal
Format:	IgG

Target Details

Gene Name:	MSI2
Reactivity:	Human, Mouse, Rat
Immunogen Type:	Conjugated Peptide
Immunogen:	Anti-MSI2 antibody was prepared from whole rabbit serum produced by repeated immunizations with a 15 amino acid synthetic peptide near the N-terminus of human MSI2.

Purity/Specificity: Anti-MSI2 Antibody was affinity purified from monospecific antiserum by immunoaffinity chromatography. MSI2 antibody is predicted to not cross-react with MSI1. Multiple isoforms of MSI2 are known to exist.

Relevant Links:

- [UniProtKB - Q96DH6](#)
- [GeneID - 124540](#)
- [NCBI - EAW94506](#)

Application Details

Tested Applications: ELISA, IF, IHC, WB

Application Note: Anti-MSI2 Antibody has been tested for use in ELISA, Western Blotting, Immunocytochemistry, immunohistochemistry, and Immunofluorescence. Specific conditions for reactivity should be optimized by the end user. Expect a band at approximately 35 kDa in Western Blots of specific cell lysates and tissues.

Assay Dilutions: All assays should be optimized by the user. Recommended dilutions (if any) may be listed below.

ELISA: 1:10,000

IF: 5 µg/mL

IHC: 5 µg/mL

WB: 1 µg/mL

Formulation

Physical State: Liquid (sterile filtered)

Concentration: 1 mg/mL by UV absorbance at 280 nm

Buffer: 0.01 M Sodium Phosphate, 0.25 M Sodium Chloride, pH 7.2

Preservative: 0.02% (w/v) Sodium Azide

Stabilizer: None

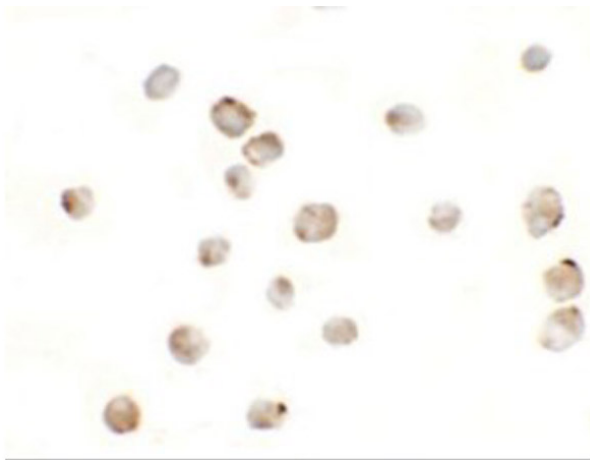
Shipping & Handling

Shipping Condition: Dry Ice

Storage Condition: Store vial at -20° C prior to opening. Aliquot contents and freeze at -20° C or below for extended storage. Avoid cycles of freezing and thawing. Centrifuge product if not completely clear after standing at room temperature. This product is stable for several weeks at 4° C as an undiluted liquid. Dilute only prior to immediate use.

Expiration: Expiration date is one (1) year from date of receipt.

Images

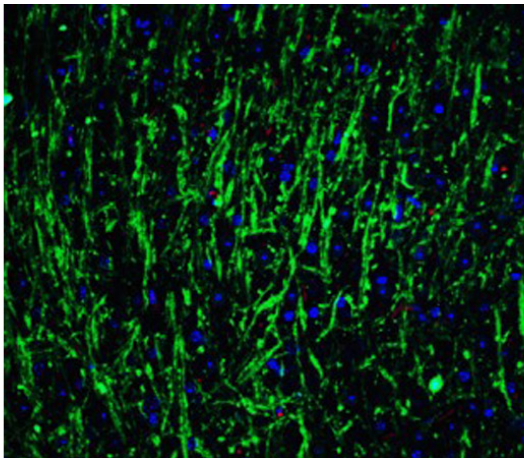


Immunocytochemistry

Immunocytochemistry of MSI2.

Cell: EL4 cells.

Primary Antibody: MSI2 antibody at 5 µg/mL.



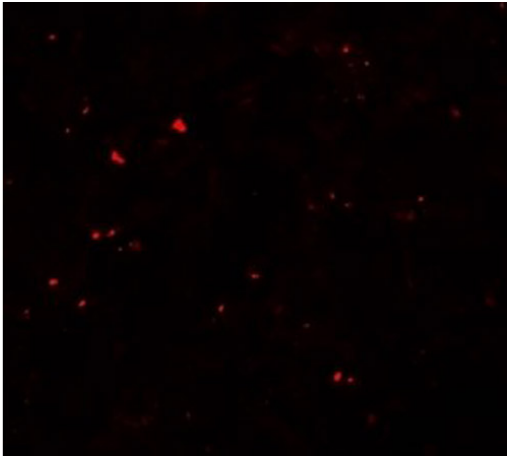
Immunofluorescence Microscopy

Immunofluorescence of MSI2.

Tissue: mouse brain tissue.

Primary Antibody: MSI2 Antibody at 20 µg/mL.

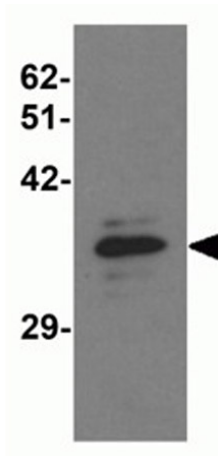
Staining: MSI2 antibody (green), Phalloidin staining (red),
DAPI staining (blue).

**Immunofluorescence Microscopy**

Immunofluorescence of MSI2.

Cell: EL4 cells.

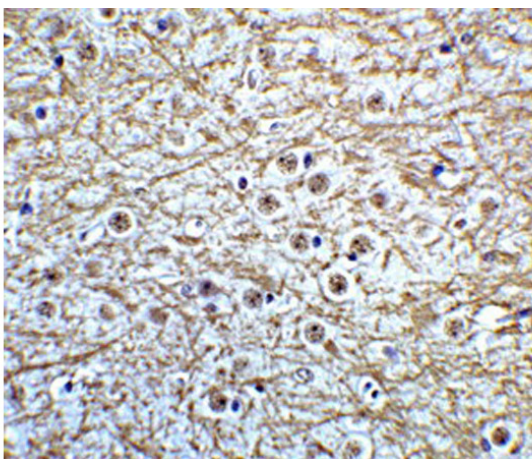
Primary Antibody: MSI2 antibody at 20 $\mu\text{g}/\text{mL}$.

**Western Blot**

Western blot analysis of MSI2.

Load: EL4 cell lysate.

Primary Antibody: MSI2 antibody at 1 $\mu\text{g}/\text{mL}$.

**Immunohistochemistry**

Immunohistochemistry of MSI2.

Tissue: mouse brain tissue.

Primary Antibody: MSI2 Antibody at 5 $\mu\text{g}/\text{mL}$.

Disclaimer

This product is for research use only and is not intended for therapeutic or diagnostic applications. Please contact a technical service representative for more information. All products of animal origin manufactured by Rockland Immunochemicals are derived from starting materials of North American origin. Collection was performed in United States Department of Agriculture (USDA) inspected facilities and all materials have been inspected and certified to be free of disease and suitable for exportation. All properties listed are typical characteristics and are not specifications. All suggestions and data are offered in good faith but without guarantee as conditions and methods of use of our products are beyond our control. All claims must be made within 30 days following the date of delivery. The prospective user must determine the suitability of our materials before adopting them on a commercial scale. Suggested uses of our products are not recommendations to use our products in violation of any patent or as a license under any patent of Rockland Immunochemicals, Inc. If you require a commercial license to use this material and do not have one, then return this material, unopened to: Rockland Inc., P.O. BOX 5199, Limerick, Pennsylvania, USA.