

Datasheet for 600-401-CU3**MIB1 Antibody****Overview**

Description:	Anti-MIB1 (RABBIT) Antibody - 600-401-CU3
Item No.:	600-401-CU3
Size:	100 µg
Applications:	ELISA, IF, IHC, WB
Reactivity:	Human, Mouse, Rat
Host Species:	Rabbit

Product Details

Background:	The E3 ubiquitin-protein ligase MIB1, also known as Mindbomb homolog 1, contains multiple ankyrin repeats and RING finger domains that functions as an E3 ubiquitin ligase (1). MIB1 interacts with and regulates the cellular expression of the death-associated protein kinase 1 (DAPK1) protein by promoting its ubiquitination and degradation (1). It also positively regulates Notch signaling by ubiquitinating the Notch receptors, thereby facilitating their endocytosis (2).
Synonyms:	MIB1 Antibody, MIB, DIP1, ZZZ6, DIP-1, LVNC7, ZZANK2, KIAA1323, E3 ubiquitin-protein ligase MIB1, DAPK-interacting protein 1
Host Species:	Rabbit
Clonality:	Polyclonal
Format:	IgG

Target Details

Gene Name:	MIB1
Reactivity:	Human, Mouse, Rat
Immunogen Type:	Conjugated Peptide
Immunogen:	Anti-MIB1 antibody was prepared from whole rabbit serum produced by repeated immunizations with a 19 amino acid peptide near the C-terminus of human MIB1.

Purity/Specificity: Anti-MIB1 antibody was affinity purified from monospecific antiserum by immunoaffinity chromatography. MIB1 antibody is human, mouse and rat reactive. At least three isoforms of MIB1 are known to exist.

Relevant Links:

- [UniProtKB - Q86YT6](#)
- [GeneID - 57534](#)
- [NCBI - NP_065825](#)

Application Details

Tested Applications: ELISA, IF, IHC, WB

Application Note: Anti-MIB1 Antibody has been tested for use in ELISA, Western Blotting, Immunocytochemistry and Immunofluorescence. Specific conditions for reactivity should be optimized by the end user. Expect a band at approximately 110 kDa in Western Blots of specific cell lysates and tissues.

Assay Dilutions: All assays should be optimized by the user. Recommended dilutions (if any) may be listed below.

ELISA: 1:10,000 - 1:20,000

IF: 20 µg/mL

WB: 1-2 µg/mL

Formulation

Physical State: Liquid (sterile filtered)

Concentration: 1 mg/mL by UV absorbance at 280 nm

Buffer: 0.01 M Sodium Phosphate, 0.25 M Sodium Chloride, pH 7.2

Preservative: 0.02% (w/v) Sodium Azide

Stabilizer: None

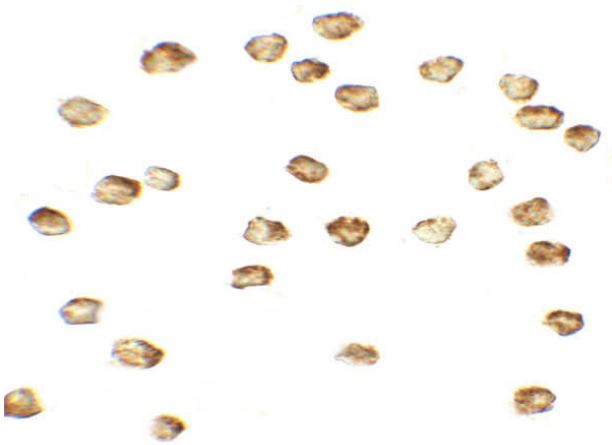
Shipping & Handling

Shipping Condition: Dry Ice

Storage Condition: Store vial at -20° C prior to opening. Aliquot contents and freeze at -20° C or below for extended storage. Avoid cycles of freezing and thawing. Centrifuge product if not completely clear after standing at room temperature. This product is stable for several weeks at 4° C as an undiluted liquid. Dilute only prior to immediate use.

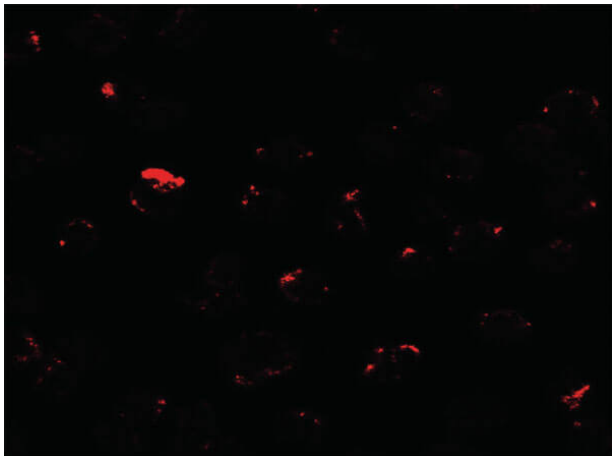
Expiration: Expiration date is one (1) year from date of receipt.

Images



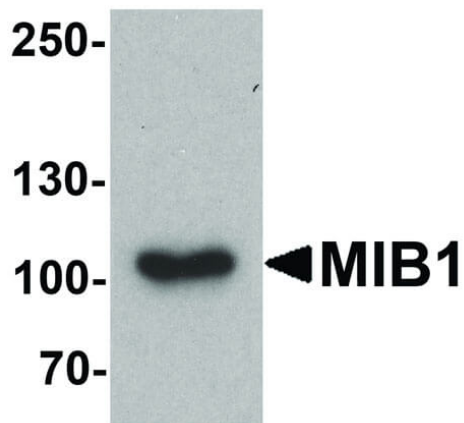
Immunocytochemistry

Immunocytochemistry of Rabbit anti-MIB1 antibody. Tissue: A431 cells. Primary antibody: MIB1 antibody at 5 µg/mL. Secondary antibody: Peroxidase rabbit secondary antibody at 1:5,000. Localization: MIB1 is nuclear. Staining: MIB1 as precipitated brown signal.



Immunofluorescence Microscopy

Immunofluorescence Microscopy of Rabbit anti-MIB1 antibody. Tissue: A431 cells. Primary antibody: MIB1 antibody at 20 µg/mL. Secondary antibody: Fluorescein rabbit secondary antibody at 1:20,000. Localization: MIB1 is cytoplasmic. Staining: MIB1 as red fluorescent signal.



Western Blot

Western Blot of Rabbit anti-MIB1 antibody. Lane A: A431 cell lysate. Primary antibody: MIB1 antibody at 1 µg/mL overnight at 4°C. Secondary antibody: Goat Anti-Rabbit HRP secondary antibody. Block: 5% BLOTTO. Predicted/Observed size: 89, 102, 111 kDa, 103 kDa for MIB1.

Disclaimer

This product is for research use only and is not intended for therapeutic or diagnostic applications. Please contact a technical service representative for more information. All products of animal origin manufactured by Rockland Immunochemicals are derived from starting materials of North American origin. Collection was performed in United States Department of Agriculture (USDA) inspected facilities and all materials have been inspected and certified to be free of disease and suitable for exportation. All properties listed are typical characteristics and are not specifications. All suggestions and data are offered in good faith but without guarantee as conditions and methods of use of our products are beyond our control. All claims must be made within 30 days following the date of delivery. The prospective user must determine the suitability of our materials before adopting them on a commercial scale. Suggested uses of our products are not recommendations to use our products in violation of any patent or as a license under any patent of Rockland Immunochemicals, Inc. If you require a commercial license to use this material and do not have one, then return this material, unopened to: Rockland Inc., P.O. BOX 5199, Limerick, Pennsylvania, USA.