

Datasheet for 600-401-CT6**MettL7B Antibody****Overview**

Description:	Anti-MettL7B (RABBIT) Antibody - 600-401-CT6
Item No.:	600-401-CT6
Size:	100 µg
Applications:	ELISA, IHC, WB
Reactivity:	Human, Mouse, Rat
Host Species:	Rabbit

Product Details

Background:	MettL7B belongs to the methyltransferase superfamily. It is a probable methyltransferase. Methyltransferase is a type of transferase enzyme which transfers a methyl group from a donor to an acceptor. Often methylation occurs on nucleic bases in DNA or amino acids in protein structures. DNA methylation is often utilized to silence and regulate genes without changing the original DNA sequence. DNA methylation may be necessary for normal growth from embryonic stages in mammals. When mutant embryonic stem cells lacking the murine DNA methyltransferase gene were introduced to a germline of mice they caused a recessive lethal phenotype. Methylation may also be linked to cancer development as methylation of tumor suppressor genes promotes tumorigenesis and metastasis.
Synonyms:	MettL7B Antibody, ALDI, Methyltransferase-like protein 7B
Host Species:	Rabbit
Clonality:	Polyclonal
Format:	IgG

Target Details

Gene Name:	METTL7B
Reactivity:	Human, Mouse, Rat
Immunogen Type:	Conjugated Peptide
Immunogen:	Anti-MettL7B antibody was prepared from whole rabbit serum produced by repeated immunizations with a 16 amino acid synthetic peptide near the C-terminus of human MettL7B.

Purity/Specificity:	Anti-MettL7B Antibody was affinity purified from monospecific antiserum by immunoaffinity chromatography. This MettL7B antibody is predicted to not cross-react with MettL7A.
Relevant Links:	<ul style="list-style-type: none">• UniProtKB - Q6UX53• GeneID - 196410• NCBI - NP_689850

Application Details

Tested Applications:	ELISA, IHC, WB
Application Note:	Anti-MettL7B Antibody has been tested for use in ELISA, Western Blotting, and Immunohistochemistry. Specific conditions for reactivity should be optimized by the end user. Expect a band at approximately 28 kDa in Western Blots of specific cell lysates and tissues.
Assay Dilutions:	All assays should be optimized by the user. Recommended dilutions (if any) may be listed below.
ELISA:	1:20,000 - 1:40,000
IHC:	2.5 µg/mL
WB:	2-4 µg/mL

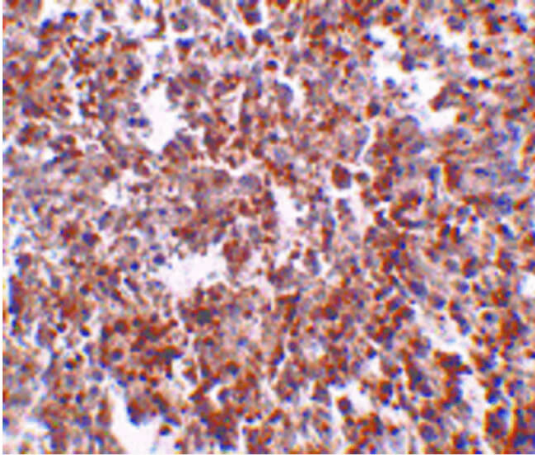
Formulation

Physical State:	Liquid (sterile filtered)
Concentration:	1 mg/mL by UV absorbance at 280 nm
Buffer:	0.01 M Sodium Phosphate, 0.25 M Sodium Chloride, pH 7.2
Preservative:	0.02% (w/v) Sodium Azide
Stabilizer:	None

Shipping & Handling

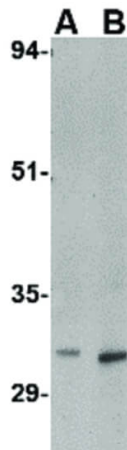
Shipping Condition:	Dry Ice
Storage Condition:	Store vial at -20° C prior to opening. Aliquot contents and freeze at -20° C or below for extended storage. Avoid cycles of freezing and thawing. Centrifuge product if not completely clear after standing at room temperature. This product is stable for several weeks at 4° C as an undiluted liquid. Dilute only prior to immediate use.
Expiration:	Expiration date is one (1) year from date of receipt.

Images



Immunohistochemistry

Immunohistochemistry of Mett7LB antibody. Tissue: Human spleen tissue. Fixation: formalin fixed paraffin embedded. Antigen retrieval: not required. Primary antibody: Mett7LB antibody at 2.5 µg/mL for 1 h at RT. Secondary antibody: Peroxidase rabbit secondary antibody at 1:10,000 for 45 min at RT. Localization: Mett7LB is nuclear and occasionally cytoplasmic. Staining: Mett7LB as a precipitated red signal with hematoxylin purple nuclear counterstain.



Western Blot

Western Blot of Mett7LB antibody. Lane A: Rat spleen tissue lysate at 2 µg/mL. Lane B: Rat spleen tissue lysate at 4 µg/mL. Load: 35 µg per lane. Secondary antibody: Peroxidase rabbit secondary antibody at 1:10,000 for 45 min at RT. Block: 5% BLOTTO overnight at 4°C. Predicted/Observed size: 27.7 kDa, ~32 kDa for Mett7LB.

Disclaimer

This product is for research use only and is not intended for therapeutic or diagnostic applications. Please contact a technical service representative for more information. All products of animal origin manufactured by Rockland Immunochemicals are derived from starting materials of North American origin. Collection was performed in United States Department of Agriculture (USDA) inspected facilities and all materials have been inspected and certified to be free of disease and suitable for exportation. All properties listed are typical characteristics and are not specifications. All suggestions and data are offered in good faith but without guarantee as conditions and methods of use of our products are beyond our control. All claims must be made within 30 days following the date of delivery. The prospective user must determine the suitability of our materials before adopting them on a commercial scale. Suggested uses of our products are not recommendations to use our products in violation of any patent or as a license under any patent of Rockland Immunochemicals, Inc. If you require a commercial license to use this material and do not have one, then return this material, unopened to: Rockland Inc., P.O. BOX 5199, Limerick, Pennsylvania, USA.