

Datasheet for 600-401-CT2**MED4 Antibody****Overview**

Description:	Anti-MED4 (RABBIT) Antibody - 600-401-CT2
Item No.:	600-401-CT2
Size:	100 µg
Applications:	ELISA, IHC, WB
Reactivity:	Human, Mouse, Rat
Host Species:	Rabbit

Product Details

Background:	The mediator complex is a multi-protein transcriptional co-activator that is expressed ubiquitously in eukaryotes from yeast to mammals and is required for induction of RNA polymerase II (pol II) transcription by DNA binding transcription factor. One of the proteins in this complex is MED4. This protein has also been shown to be part of the vitamin D receptor interacting complex. MED4 was recently identified as an HIV dependency factor (HDF), suggesting that MED4 may be an important drug target in HIV treatment.
Synonyms:	MED4 Antibody, ARC36, VDRIP, DRIP36, TRAP36, HSPC126, ARC36, Mediator of RNA polymerase II transcription subunit 4, Activator-recruited cofactor 36 kDa component
Host Species:	Rabbit
Clonality:	Polyclonal
Format:	IgG

Target Details

Gene Name:	MED4
Reactivity:	Human, Mouse, Rat
Immunogen Type:	Conjugated Peptide
Immunogen:	Anti-MED4 antibody was prepared from whole rabbit serum produced by repeated immunizations with a 17 amino acid synthetic peptide from near the C-terminus of human MED4.

Purity/Specificity: Anti-MED4 Antibody was affinity purified from monospecific antiserum by immunoaffinity chromatography. At least three isoforms of MED4 are known to exist; this antibody only recognizes the largest isoform.

Relevant Links:

- [UniProtKB - Q9NPJ6](#)
- [GeneID - 29079](#)
- [NCBI - NP_054885](#)

Application Details

Tested Applications: ELISA, IHC, WB

Application Note: Anti-MED4 Antibody has been tested for use in ELISA, Western Blotting, and Immunohistochemistry. Specific conditions for reactivity should be optimized by the end user. Expect a band at approximately 30 kDa in Western Blots of specific cell lysates and tissues.

Assay Dilutions: All assays should be optimized by the user. Recommended dilutions (if any) may be listed below.

ELISA: 1:5,000

IHC: 10 µg/mL

WB: .5 µg/mL

Formulation

Physical State: Liquid (sterile filtered)

Concentration: 1.0mg/ml by UV absorbance at 280 nm

Buffer: 0.01 M Sodium Phosphate, 0.25 M Sodium Chloride, pH 7.2

Preservative: 0.02% (w/v) Sodium Azide

Stabilizer: None

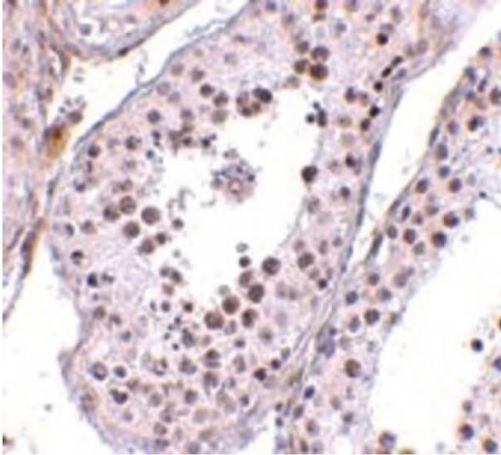
Shipping & Handling

Shipping Condition: Dry Ice

Storage Condition: Store vial at -20° C prior to opening. Aliquot contents and freeze at -20° C or below for extended storage. Avoid cycles of freezing and thawing. Centrifuge product if not completely clear after standing at room temperature. This product is stable for several weeks at 4° C as an undiluted liquid. Dilute only prior to immediate use.

Expiration: Expiration date is one (1) year from date of receipt.

Images



Immunohistochemistry

Immunohistochemistry of MED4 antibody. Tissue: Human testis tissue. Fixation: formalin fixed paraffin embedded. Antigen retrieval: not required. Primary antibody: MED4 antibody at 10 $\mu\text{g}/\text{mL}$ for 1 h at RT. Secondary antibody: Peroxidase rabbit secondary antibody at 1:10,000 for 45 min at RT. Localization: MED4 is nuclear and occasionally cytoplasmic. Staining: MED4 as a precipitated red signal with hematoxylin purple nuclear counterstain.



Western Blot

Western Blot of MED4 antibody. Lane 1: Human testis tissue lysate at 0.5 $\mu\text{g}/\text{mL}$. Load: 35 μg per lane. Secondary antibody: Peroxidase rabbit secondary antibody at 1:10,000 for 45 min at RT. Block: 5% BLOTTO overnight at 4°C. Predicted/Observed size: 29.7 kDa, ~29 kDa for MED4.

Disclaimer

This product is for research use only and is not intended for therapeutic or diagnostic applications. Please contact a technical service representative for more information. All products of animal origin manufactured by Rockland Immunochemicals are derived from starting materials of North American origin. Collection was performed in United States Department of Agriculture (USDA) inspected facilities and all materials have been inspected and certified to be free of disease and suitable for exportation. All properties listed are typical characteristics and are not specifications. All suggestions and data are offered in good faith but without guarantee as conditions and methods of use of our products are beyond our control. All claims must be made within 30 days following the date of delivery. The prospective user must determine the suitability of our materials before adopting them on a commercial scale. Suggested uses of our products are not recommendations to use our products in violation of any patent or as a license under any patent of Rockland Immunochemicals, Inc. If you require a commercial license to use this material and do not have one, then return this material, unopened to: Rockland Inc., P.O. BOX 5199, Limerick, Pennsylvania, USA.