

**Datasheet for 600-401-CT1****MED28 Antibody****Overview**

|                      |  |
|----------------------|--|
| <b>Description:</b>  | Anti-MED28 (RABBIT) Antibody - 600-401-CT1 |
| <b>Item No.:</b>     | 600-401-CT1                                |
| <b>Size:</b>         | 100 µg                                     |
| <b>Applications:</b> | ELISA, IF, IHC, WB                         |
| <b>Reactivity:</b>   | Human, Mouse                               |
| <b>Host Species:</b> | Rabbit                                     |

**Product Details**

|                      |  |
|----------------------|--|
| <b>Background:</b>   | The mediator complex is a multi-protein transcriptional co-activator that is expressed ubiquitously in eukaryotes from yeast to mammals and is required for induction of RNA polymerase II (pol II) transcription by DNA binding transcription factor. One of the proteins in this complex is MED28, also known as Magicin. MED28 is expressed in many cell lines and tissues. It has been shown that a down-regulation of MED28 expression in NIH3T3 cells results in a significant induction of several genes associated with smooth muscle cell differentiation and conversely its over-expression represses expression of SMC genes. MED28 can also form a ternary complex with Grb2 and Merlin, the neurofibromatosis 2 tumor suppressor protein, indicating that MED28 may play a role in Merlin's tumor suppressive activity. MED28 has also been recently identified as an HIV dependency factor (HDF), suggesting that MED28 may be an important drug target in HIV treatment. At least two isoforms of MED28 are known to exist. |
| <b>Synonyms:</b>     | MED28 Antibody, EG1, magicin, 1500003D12Rik, EG1, FKSG20, Mediator of RNA polymerase II transcription subunit 28, Endothelial-derived protein 1, Magicin   |
| <b>Host Species:</b> | Rabbit   |
| <b>Clonality:</b>    | Polyclonal   |
| <b>Format:</b>       | IgG  |

**Target Details**

|                    |              |
|--------------------|--------------|
| <b>Gene Name:</b>  | MED28        |
| <b>Reactivity:</b> | Human, Mouse |

|                            |  |
|----------------------------|--|
| <b>Immunogen Type:</b>     | Conjugated Peptide   |
| <b>Immunogen:</b>          | Anti-MED28 antibody was prepared from whole rabbit serum produced by repeated immunizations with a 17 amino acid synthetic peptide from near the internal region of human MED28. |
| <b>Purity/Specificity:</b> | Anti-MED28 Antibody was affinity purified from monospecific antiserum by immunoaffinity chromatography. Cross reactivity with MED28 from other sources has not been determined.  |
| <b>Relevant Links:</b>     | <ul style="list-style-type: none"><li>• <a href="#">UniProtKB - Q9H204</a></li><li>• <a href="#">GeneID - 80306</a></li><li>• <a href="#">NCBI - NP_079481</a></li></ul>         |

## Application Details

|                             |   |
|-----------------------------|---|
| <b>Tested Applications:</b> | ELISA, IF, IHC, WB  |
| <b>Application Note:</b>    | Anti-MED28 Antibody has been tested for use in ELISA, Western Blotting, Immunohistochemistry and Immunofluorescence. Specific conditions for reactivity should be optimized by the end user. Expect a band at approximately 20 kDa in Western Blots of specific cell lysates and tissues. |
| <b>Assay Dilutions:</b>     | All assays should be optimized by the user. Recommended dilutions (if any) may be listed below.   |
| <b>ELISA:</b>               | 1:10,000  |
| <b>IF:</b>                  | 20 µg/mL  |
| <b>IHC:</b>                 | 2.5 µg/mL   |
| <b>WB:</b>                  | 1 µg/mL   |

## Formulation

|                        |   |
|------------------------|---|
| <b>Physical State:</b> | Liquid (sterile filtered)                               |
| <b>Concentration:</b>  | 1 mg/mL by UV absorbance at 280 nm                      |
| <b>Buffer:</b>         | 0.01 M Sodium Phosphate, 0.25 M Sodium Chloride, pH 7.2 |
| <b>Preservative:</b>   | 0.02% (w/v) Sodium Azide                                |
| <b>Stabilizer:</b>     | None  |

## Shipping & Handling

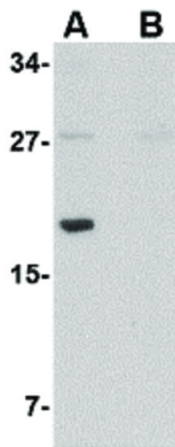
|                            |         |
|----------------------------|---------|
| <b>Shipping Condition:</b> | Dry Ice |
|----------------------------|---------|

---

|                           |   |
|---------------------------|---|
| <b>Storage Condition:</b> | Store vial at -20° C prior to opening. Aliquot contents and freeze at -20° C or below for extended storage. Avoid cycles of freezing and thawing. Centrifuge product if not completely clear after standing at room temperature. This product is stable for several weeks at 4° C as an undiluted liquid. Dilute only prior to immediate use. |
| <b>Expiration:</b>        | Expiration date is one (1) year from date of receipt.   |

---

## Images



### Western Blot

Western Blot of MED28 antibody. Lane A: Human brain tissue lysate in the absence of blocking peptide. Lane B: Human brain tissue lysate in the presence of blocking peptide. Load: 35 µg per lane. Primary Antibody: Anti-MED28 at 1 µg/mL. Secondary antibody: Peroxidase rabbit secondary antibody at 1:10,000 for 45 min at RT. Block: 5% BLOTTO overnight at 4°C. Predicted/Observed size: 19.5 kDa, ~19 kDa for MED28.

## Disclaimer

This product is for research use only and is not intended for therapeutic or diagnostic applications. Please contact a technical service representative for more information. All products of animal origin manufactured by Rockland Immunochemicals are derived from starting materials of North American origin. Collection was performed in United States Department of Agriculture (USDA) inspected facilities and all materials have been inspected and certified to be free of disease and suitable for exportation. All properties listed are typical characteristics and are not specifications. All suggestions and data are offered in good faith but without guarantee as conditions and methods of use of our products are beyond our control. All claims must be made within 30 days following the date of delivery. The prospective user must determine the suitability of our materials before adopting them on a commercial scale. Suggested uses of our products are not recommendations to use our products in violation of any patent or as a license under any patent of Rockland Immunochemicals, Inc. If you require a commercial license to use this material and do not have one, then return this material, unopened to: Rockland Inc., P.O. BOX 5199, Limerick, Pennsylvania, USA.