

Datasheet for 600-401-CR8

MCG10 Antibody

Overview

Description:	Anti-MCG10 (RABBIT) Antibody - 600-401-CR8
Item No.:	600-401-CR8
Size:	100 µg
Applications:	ELISA, IF, IHC, WB
Reactivity:	Human
Host Species:	Rabbit

Product Details

Background:	MCG10 is a member of the KH-domain RNA-binding protein family. Proteins of this family also referred to as alpha-CPs, bind to RNA with specificity for C-rich pyrimidine regions. Alpha-CPs play important roles in post-transcriptional activities and have different cellular distributions. MCG10 is induced by p53 and DNA damage via two p53-responsive promoter elements. Its overexpression in transfected cells results in the suppression of cell proliferation by inducing apoptosis and cell cycle arrest in G2-M. Decreased expression of one isoform of MCG10 has been observed in many forms of lung cancer, leading to speculation that MCG10 can act as a tumor suppressor. Multiple alternatively spliced isoforms of MCG10 have been identified.
Synonyms:	MCG10 Antibody, CBP, LIP4, MCG10Alpha-CP4
Host Species:	Rabbit
Clonality:	Polyclonal
Format:	IgG

Target Details

Gene Name:	PCBP4
Reactivity:	Human
Immunogen Type:	Conjugated Peptide
Immunogen:	Anti-MCG10 antibody was prepared from whole rabbit serum produced by repeated immunizations with a 17 amino acid synthetic peptide from near the C-terminus of human MCG10.

Purity/Specificity: Anti-MCG10 Antibody was affinity purified from monospecific antiserum by immunoaffinity chromatography. Cross reactivity with MCG10 from other sources has not been determined.

Relevant Links:

- [UniProtKB - P57723](#)
- [GeneID - 57060](#)
- [NCBI - EAW65166](#)

Application Details

Tested Applications: ELISA, IF, IHC, WB

Application Note: Anti-MCG10 Antibody has been tested for use in ELISA, Western Blotting, Immunocytochemistry and Immunofluorescence. Specific conditions for reactivity should be optimized by the end user. Expect a band at approximately 41 kDa in Western Blots of specific cell lysates and tissues.

Assay Dilutions: All assays should be optimized by the user. Recommended dilutions (if any) may be listed below.

ELISA: 1:5000 - 1:20,000

IF: 20 µg/mL

WB: 0.5 - 2 µg/ml

Formulation

Physical State: Liquid (sterile filtered)

Concentration: 1mg/ml by UV absorbance at 280 nm

Buffer: 0.01 M Sodium Phosphate, 0.25 M Sodium Chloride, pH 7.2

Preservative: 0.02% (w/v) Sodium Azide

Stabilizer: None

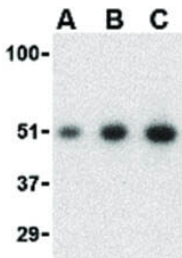
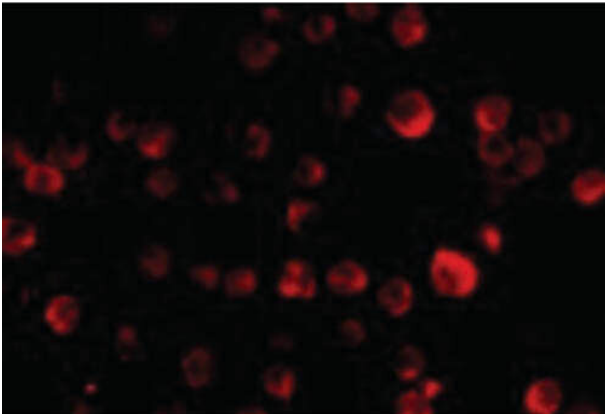
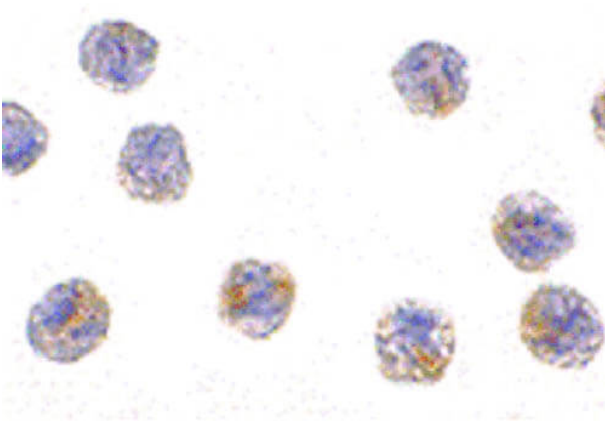
Shipping & Handling

Shipping Condition: Dry Ice

Storage Condition: Store vial at -20° C prior to opening. Aliquot contents and freeze at -20° C or below for extended storage. Avoid cycles of freezing and thawing. Centrifuge product if not completely clear after standing at room temperature. This product is stable for several weeks at 4° C as an undiluted liquid. Dilute only prior to immediate use.

Expiration: Expiration date is one (1) year from date of receipt.

Images



Immunocytochemistry

Immunocytochemistry of MCG10 antibody. Cells: HeLa cells. Fixation: formalin fixed paraffin embedded. Antigen retrieval: not required. Primary antibody: MCG10 antibody at 1 $\mu\text{g}/\text{mL}$ for 1 h at RT. Secondary antibody: Peroxidase rabbit secondary antibody at 1:10,000 for 45 min at RT. Localization: MCG10 cytoplasmic. Staining: MCG10 as precipitated brown signal with hematoxylin blue nuclear counterstain.

Immunofluorescence Microscopy

Immunofluorescence Microscopy of MCG10 antibody. Tissue: HeLa cells. Fixation: 0.5% PFA. Antigen retrieval: not required. Primary antibody: MCG10 antibody at 20 $\mu\text{g}/\text{mL}$ for 1 h at RT. Secondary antibody: Fluorescein rabbit secondary antibody at 1:10,000 for 45 min at RT. Localization: MCG10 is cytoplasmic. Staining: MCG10 as red fluorescent signal.

Western Blot

Western Blot of MCG10 antibody. Lane 1: HeLa cell lysate with MCG10 at 0.5 $\mu\text{g}/\text{mL}$. Lane 2: HeLa cell lysate with MCG10 at 1 $\mu\text{g}/\text{mL}$. Lane 3: HeLa cell lysate with MCG10 at 2 $\mu\text{g}/\text{mL}$. Load: 35 μg per lane. Secondary antibody: Peroxidase rabbit secondary antibody at 1:10,000 for 45 min at RT. Block: 5% BLOTTO overnight at 4°C. Predicted/Observed size: 41.5 kDa, 51 kDa for MCG10.

Disclaimer

This product is for research use only and is not intended for therapeutic or diagnostic applications. Please contact a technical service representative for more information. All products of animal origin manufactured by Rockland Immunochemicals are derived from starting materials of North American origin. Collection was performed in United States Department of Agriculture (USDA) inspected facilities and all materials have been inspected and certified to be free of disease and suitable for exportation. All properties listed are typical characteristics and are not specifications. All suggestions and data are offered in good faith but without guarantee as conditions and methods of use of our products are beyond our control. All claims must be made within 30 days following the date of delivery. The prospective user must determine the suitability of our materials before adopting them on a commercial scale. Suggested uses of our products are not recommendations to use our products in violation of any patent or as a license under any patent of Rockland Immunochemicals, Inc. If you require a commercial license to use this material and do not have one, then return this material, unopened to: Rockland Inc., P.O. BOX 5199, Limerick, Pennsylvania, USA.