

Datasheet for 600-401-CR0**MARVELD1 Antibody****Overview**

Description:	Anti-MARVELD1 (RABBIT) Antibody - 600-401-CR0
Item No.:	600-401-CR0
Size:	100 µg
Applications:	ELISA, WB
Reactivity:	Human, Mouse, Rat
Host Species:	Rabbit

Product Details

Background:	MARVELD1, (MARVEL domain-containing 1), is one of the MARVEL (MAL and related proteins for vesicle trafficking and membrane link) domain-containing proteins. It is a nuclear-localized protein that is widely expressed in normal human tissues. While it has been reported to be overexpressed in colon cancer, MARVELD1 protein levels are generally lower in several primary tumors including ovary, breast, kidney, bladder and liver. This lower level of MARVELD1 expression in tumors is thought to be due to a higher methylation status of the MARVELD1 promoter as treatment of MDA-MB-361 with 5-aza-2'-deoxycytidine restores MARVELD1 expression, suggesting that loss of MARVELD1 expression may contribute to tumorigenicity.
Synonyms:	MARVELD1 Antibody, MRVLDC1, MARVEL domain-containing protein 1
Host Species:	Rabbit
Clonality:	Polyclonal
Format:	IgG

Target Details

Gene Name:	MARVELD1
Reactivity:	Human, Mouse, Rat
Immunogen Type:	Conjugated Peptide
Immunogen:	Anti-MARVELD1 antibody was prepared from whole rabbit serum produced by repeated immunizations with a 16 amino acid synthetic peptide from near the N-terminus of human MARVELD1.

Purity/Specificity:	Anti-MARVELD1 Antibody was affinity purified from monospecific antiserum by immunoaffinity chromatography. Cross reactivity with MARVELD1 from other sources has not been determined.
Relevant Links:	<ul style="list-style-type: none">• UniProtKB - Q9BSK0• GeneID - 83742• NCBI - EAW49903

Application Details

Tested Applications:	ELISA, WB
Application Note:	Anti-MARVELD1 Antibody has been tested for use in ELISA and Western Blotting. Specific conditions for reactivity should be optimized by the end user. Expect a band at approximately 19 kDa in Western Blots of specific cell lysates and tissues.
Assay Dilutions:	All assays should be optimized by the user. Recommended dilutions (if any) may be listed below.
ELISA:	1:10,000 - 1:20,000
WB:	1-2 µg/ml

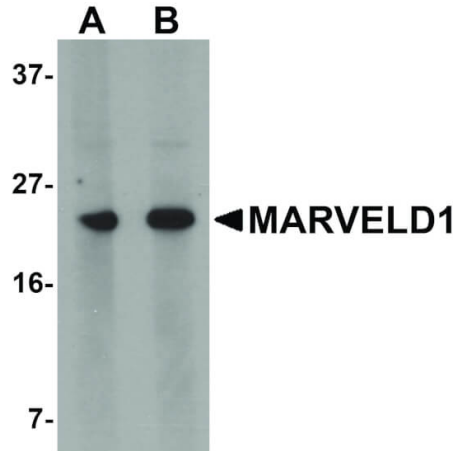
Formulation

Physical State:	Liquid (sterile filtered)
Concentration:	1mg/ml by UV absorbance at 280 nm
Buffer:	0.01 M Sodium Phosphate, 0.25 M Sodium Chloride, pH 7.2
Preservative:	0.02% (w/v) Sodium Azide
Stabilizer:	None

Shipping & Handling

Shipping Condition:	Dry Ice
Storage Condition:	Store vial at -20° C prior to opening. Aliquot contents and freeze at -20° C or below for extended storage. Avoid cycles of freezing and thawing. Centrifuge product if not completely clear after standing at room temperature. This product is stable for several weeks at 4° C as an undiluted liquid. Dilute only prior to immediate use.
Expiration:	Expiration date is one (1) year from date of receipt.

Images



Western Blot

Western Blot of MARVELD1 antibody. Lane 1: Mouse heart tissue lysate with MARVELD1 antibody at 1 µg/mL. Lane 2: Mouse heart tissue lysate with MARVELD1 antibody at 2 µg/mL. Secondary antibody: Peroxidase rabbit secondary antibody at 1:10,000 for 45 min at RT. Block: 5% BLOTTO overnight at 4°C. Predicted/Observed size: 19 kDa, 21 kDa for MARVELD1. Other band(s): MARVELD1 splice variants and isoforms.

Disclaimer

This product is for research use only and is not intended for therapeutic or diagnostic applications. Please contact a technical service representative for more information. All products of animal origin manufactured by Rockland Immunochemicals are derived from starting materials of North American origin. Collection was performed in United States Department of Agriculture (USDA) inspected facilities and all materials have been inspected and certified to be free of disease and suitable for exportation. All properties listed are typical characteristics and are not specifications. All suggestions and data are offered in good faith but without guarantee as conditions and methods of use of our products are beyond our control. All claims must be made within 30 days following the date of delivery. The prospective user must determine the suitability of our materials before adopting them on a commercial scale. Suggested uses of our products are not recommendations to use our products in violation of any patent or as a license under any patent of Rockland Immunochemicals, Inc. If you require a commercial license to use this material and do not have one, then return this material, unopened to: Rockland Inc., P.O. BOX 5199, Limerick, Pennsylvania, USA.