

**Datasheet for 600-401-CQ8****MAPKAP1 Antibody****Overview**

<b>Description:</b>	Anti-MAPKAP1 (RABBIT) Antibody - 600-401-CQ8
<b>Item No.:</b>	600-401-CQ8
<b>Size:</b>	100 µg
<b>Applications:</b>	ELISA, IF, IHC, WB
<b>Reactivity:</b>	Human, Mouse, Rat
<b>Host Species:</b>	Rabbit

**Product Details**

<b>Background:</b>	MAPKAP1 was initially identified as the human homolog of <i>S. pombe</i> SIN1. Recent evidence has shown that it identical to Mip1, a protein that interacts with MEKK2, a member of the mitogen-activated protein kinase (MAPK) intracellular signaling network. MAPKAP1 is thought to prevent MEKK2 activation and dimerization by forming a complex with the inactive and non-phosphorylated MEKK2, thereby blocking the JNK1/2, ERK1/2, p38 and ERK5 MAPKs. MAPKAP1 has also been shown to play a role in the TOR signaling process, a pathway that is involved in controlling cell growth and proliferation in response to environmental cues such as nutrients, growth factors and hormones. Experiments showed that MAPKAP1 helped to maintain the TOR/riCTOR assembly but not the TOR/RAPTOR complex, which allowed specific phosphorylation of Akt, a kinase that is believed to couple the growth factor-PI3K signaling pathway to the nutrient-regulated TOR signaling pathway. Multiple alternatively spliced isoforms of MAPKAP1 have been identified.
<b>Synonyms:</b>	MAPKAP1 Antibody, MIP1, SIN1, JC310, SIN1b, SIN1g, MIP1, Target of rapamycin complex 2 subunit MAPKAP1, Mitogen-activated protein kinase 2-associated protein 1, TORC2 subunit MAPKAP1
<b>Host Species:</b>	Rabbit
<b>Clonality:</b>	Polyclonal
<b>Format:</b>	IgG

**Target Details**

<b>Gene Name:</b>	MAPKAP1
-------------------	---------

<b>Reactivity:</b>	Human, Mouse, Rat
<b>Immunogen Type:</b>	Conjugated Peptide
<b>Immunogen:</b>	Anti-MAPKAP1 antibody was prepared from whole rabbit serum produced by repeated immunizations with a 19 amino acid synthetic peptide from near the N-terminus of human MAPKAP1.
<b>Purity/Specificity:</b>	Anti-MAPKAP1 Antibody was affinity purified from monospecific antiserum by immunoaffinity chromatography. Cross reactivity with MAPKAP1 from other sources has not been determined.
<b>Relevant Links:</b>	<ul style="list-style-type: none"><li>• <a href="#">UniProtKB - Q9BPZ7</a></li><li>• <a href="#">GenelD - 79109</a></li><li>• <a href="#">NCBI - NP_001006618</a></li></ul>

## Application Details

<b>Tested Applications:</b>	ELISA, IF, IHC, WB
<b>Application Note:</b>	Anti-MAPKAP1 Antibody has been tested for use in ELISA, Western Blotting, Immunohistochemistry and Immunofluorescence. Specific conditions for reactivity should be optimized by the end user. Expect a band at approximately 59 kDa in Western Blots of specific cell lysates and tissues.
<b>Assay Dilutions:</b>	All assays should be optimized by the user. Recommended dilutions (if any) may be listed below.
<b>ELISA:</b>	1:5000 - 1:10000
<b>IF:</b>	20 µg/mL
<b>IHC:</b>	2.5 µg/mL
<b>WB:</b>	0.5 - 1 µg/ml

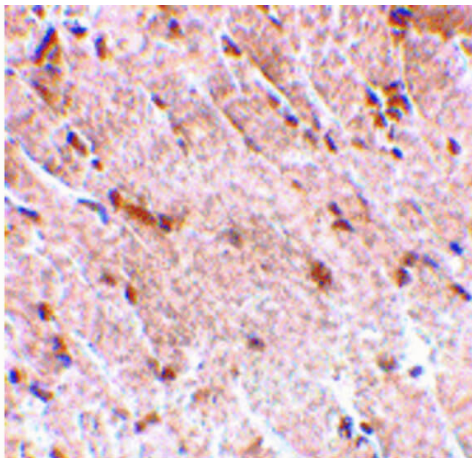
## Formulation

<b>Physical State:</b>	Liquid (sterile filtered)
<b>Concentration:</b>	1 mg/mL by UV absorbance at 280 nm
<b>Buffer:</b>	0.01 M Sodium Phosphate, 0.25 M Sodium Chloride, pH 7.2
<b>Preservative:</b>	0.02% (w/v) Sodium Azide
<b>Stabilizer:</b>	None

## Shipping & Handling

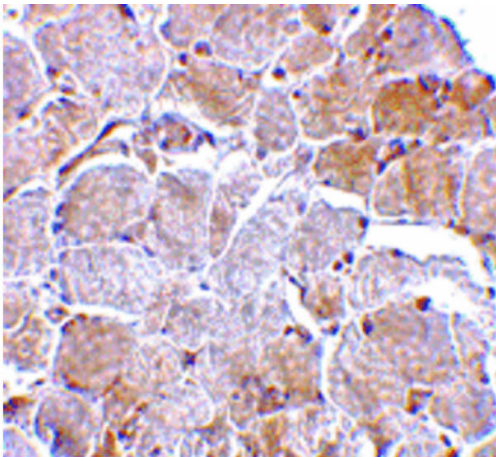
<b>Shipping Condition:</b>	Dry Ice
<b>Storage Condition:</b>	Store vial at -20° C prior to opening. Aliquot contents and freeze at -20° C or below for extended storage. Avoid cycles of freezing and thawing. Centrifuge product if not completely clear after standing at room temperature. This product is stable for several weeks at 4° C as an undiluted liquid. Dilute only prior to immediate use.
<b>Expiration:</b>	Expiration date is one (1) year from date of receipt.

## Images



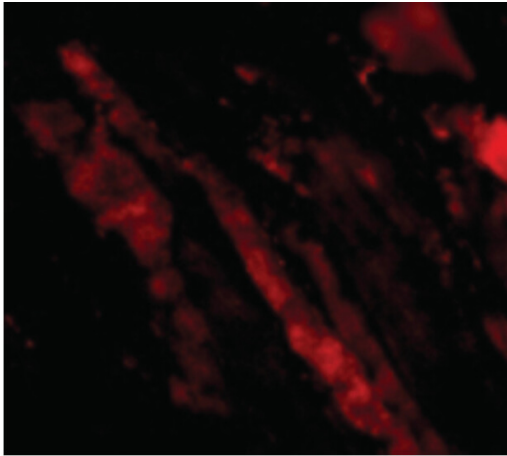
### Immunohistochemistry

Immunohistochemistry of MAPKAP1 antibody. Tissue: Human skeletal muscle tissue. Fixation: formalin fixed paraffin embedded. Antigen retrieval: not required. Primary antibody: MAPKAP1 antibody at 5 µg/mL for 1 h at RT. Secondary antibody: Peroxidase rabbit secondary antibody at 1:10,000 for 45 min at RT. Localization: MAPKAP1 is nuclear and occasionally cytoplasmic. Staining: MAPKAP1 as precipitated red signal with hematoxylin purple nuclear counterstain.

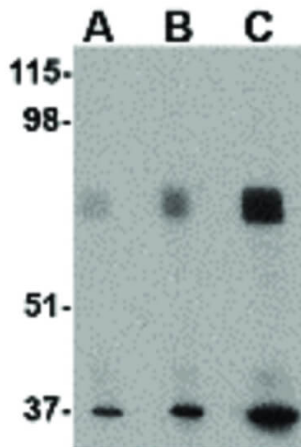


### Immunohistochemistry

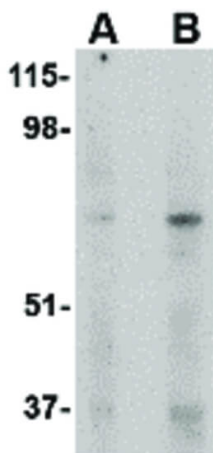
Immunohistochemistry of MAPKAP1 antibody. Tissue: Human skeletal muscle tissue. Fixation: formalin fixed paraffin embedded. Antigen retrieval: not required. Primary antibody: MAPKAP1 antibody at 2.5 µg/mL for 1 h at RT. Secondary antibody: Peroxidase rabbit secondary antibody at 1:10,000 for 45 min at RT. Localization: MAPKAP1 is nuclear and occasionally cytoplasmic. Staining: MAPKAP1 as precipitated red signal with hematoxylin purple nuclear counterstain.


**Immunofluorescence Microscopy**

Immunofluorescence Microscopy of MAPKAP1 antibody.  
 Tissue: Human skeletal muscle cells. Fixation: 0.5% PFA.  
 Antigen retrieval: not required. Primary antibody: MAPKAP1 antibody at 20 µg/mL for 1 h at RT. Secondary antibody: Fluorescein rabbit secondary antibody at 1:10,000 for 45 min at RT. Staining: MAPKAP1 as red fluorescent signal.


**Western Blot**

Western Blot of MAPKAP1 antibody. Lane A: Human skeletal muscle tissue lysate at 0.5 µg/mL. Lane B: Human skeletal muscle tissue lysate at 1 µg/mL.  
 Lane C: Human skeletal muscle tissue lysate at 2 µg/mL. Load: 35 µg per lane. Secondary antibody: Peroxidase rabbit secondary antibody at 1:10,000 for 45 min at RT. Block: 5% BLOTTO overnight at 4°C. Predicted/Observed size: 59.1 kDa, ~65 kDa for MAPKAP1. Other band(s): MAPKAP1 splice variants and isoforms.


**Western Blot**

Western Blot of MAPKAP1 antibody. Lane A: Human skeletal muscle tissue lysate at 1 µg/mL. Lane B: Human skeletal muscle tissue lysate at 2 µg/mL. Load: 35 µg per lane. Secondary antibody: Peroxidase rabbit secondary antibody at 1:10,000 for 45 min at RT. Block: 5% BLOTTO overnight at 4°C. Predicted/Observed size: 59.1 kDa, ~65 kDa for MAPKAP1. Other band(s): MAPKAP1 splice variants and isoforms.

**Disclaimer**

This product is for research use only and is not intended for therapeutic or diagnostic applications. Please contact a technical service representative for more information. All products of animal origin manufactured by Rockland Immunochemicals are derived from starting materials of North American origin. Collection was performed in United States Department of Agriculture (USDA) inspected facilities and all materials have been inspected and certified to be free of disease and suitable for exportation. All properties listed are typical characteristics and are not specifications. All suggestions and data are offered in good faith but without guarantee as conditions and methods of use of our products are beyond our control. All claims must be made within 30 days following the date of delivery. The prospective user must determine the suitability of our materials before adopting them on a commercial scale. Suggested uses of our products are not recommendations to use our products in violation of any patent or as a license under any patent of Rockland Immunochemicals, Inc. If you require a commercial license to use this material and do not have one, then return this material, unopened to: Rockland Inc., P.O. BOX 5199, Limerick, Pennsylvania, USA.