

**Datasheet for 600-401-CQ0****MALT1 Antibody****Overview**

<b>Description:</b>	Anti-MALT1 (RABBIT) Antibody - 600-401-CQ0
<b>Item No.:</b>	600-401-CQ0
<b>Size:</b>	100 µg
<b>Applications:</b>	ELISA, IF, IHC, WB
<b>Reactivity:</b>	Human, Mouse, Rat
<b>Host Species:</b>	Rabbit

**Product Details**

<b>Background:</b>	MALT1 was initially identified as a novel gene that was recurrently rearranged in t(11;18) (q21;q21) mucosa-associated lymphoid tissue lymphomas along with the apoptosis inhibitor protein c-IAP2 (1). MALT1, along with the proteins CARMA1 and Bcl10 form an NF-kappaB-activating complex, termed the CBM signalsome, that acts downstream of lymphocyte antigen receptors as well as many other non-lymphoid cell-surface receptors that play a role in multiple cellular functions (2,3). MALT1 has proteolytic activity, and this activity is critical for full NF-kappaB response in T cell activation (4).
<b>Synonyms:</b>	Mucosa associated lymphoid tissue lymphoma translocation 1, IMD12, MLT, MLT1
<b>Host Species:</b>	Rabbit
<b>Clonality:</b>	Polyclonal
<b>Format:</b>	IgG

**Target Details**

<b>Gene Name:</b>	MALT1
<b>Reactivity:</b>	Human, Mouse, Rat
<b>Immunogen Type:</b>	Conjugated Peptide
<b>Immunogen:</b>	Anti-MALT1 antibody was prepared from whole rabbit serum produced by repeated immunizations with an 18 amino acid peptide near the C-terminus of human MALT1.

**Purity/Specificity:** Anti-MALT1 antibody was affinity purified from monospecific antiserum by immunoaffinity chromatography. MALT1 antibody is human, mouse and rat reactive. At least two isoforms of MALT1 are known to exist; this antibody will detect both isoforms.

**Relevant Links:**

- [UniProtKB - Q9UDY8](#)
- [GeneID - 10892](#)
- [NCBI - NP\\_006776](#)

## Application Details

**Tested Applications:** ELISA, IF, IHC, WB

**Application Note:** Anti-MALT1 Antibody has been tested for use in ELISA, immunohistochemistry, immunofluorescence, and Western Blotting. Specific conditions for reactivity should be optimized by the end user. Expect a band at approximately 92 kDa in Western Blots of specific cell lysates and tissues.

**Assay Dilutions:** All assays should be optimized by the user. Recommended dilutions (if any) may be listed below.

**ELISA:** 1:10,000 - 1:20,000

**IF:** 20 µg/mL

**IHC:** 5 µg/mL

**WB:** 1-2 mg/mL

## Formulation

**Physical State:** Liquid (sterile filtered)

**Concentration:** 1 mg/mL by UV absorbance at 280 nm

**Buffer:** 0.01 M Sodium Phosphate, 0.25 M Sodium Chloride, pH 7.2

**Preservative:** 0.02% (w/v) Sodium Azide

**Stabilizer:** None

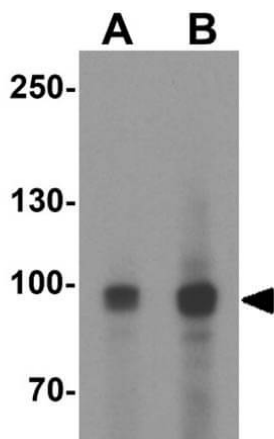
## Shipping & Handling

**Shipping Condition:** Dry Ice

**Storage Condition:** Store vial at -20° C prior to opening. Aliquot contents and freeze at -20° C or below for extended storage. Avoid cycles of freezing and thawing. Centrifuge product if not completely clear after standing at room temperature. This product is stable for several weeks at 4° C as an undiluted liquid. Dilute only prior to immediate use.

**Expiration:** Expiration date is one (1) year from date of receipt.

## Images



### Western Blot

Western Blot of Rabbit Anti-MALT1 antibody. Load: EL4 Lysate. Primary Antibody: Anti-MALT1 in Lane 1 at 1µg/mL; Lane 2 at 2µg/mL overnight at 4°C. Secondary Antibody: Goat anti-Rabbit HRP 611-103-122 at 1:70000 at RT for 30 min. Blocking: MB-073 BlockOut buffer. Expect: ~91kDa.

## Disclaimer

This product is for research use only and is not intended for therapeutic or diagnostic applications. Please contact a technical service representative for more information. All products of animal origin manufactured by Rockland Immunochemicals are derived from starting materials of North American origin. Collection was performed in United States Department of Agriculture (USDA) inspected facilities and all materials have been inspected and certified to be free of disease and suitable for exportation. All properties listed are typical characteristics and are not specifications. All suggestions and data are offered in good faith but without guarantee as conditions and methods of use of our products are beyond our control. All claims must be made within 30 days following the date of delivery. The prospective user must determine the suitability of our materials before adopting them on a commercial scale. Suggested uses of our products are not recommendations to use our products in violation of any patent or as a license under any patent of Rockland Immunochemicals, Inc. If you require a commercial license to use this material and do not have one, then return this material, unopened to: Rockland Inc., P.O. BOX 5199, Limerick, Pennsylvania, USA.