

Datasheet for 600-401-CP7**Maelstrom Antibody****Overview**

Description:	Anti-Maelstrom (RABBIT) Antibody - 600-401-CP7
Item No.:	600-401-CP7
Size:	100 µg
Applications:	ELISA, IF, IHC, WB
Reactivity:	Human, Mouse, Rat
Host Species:	Rabbit

Product Details

Background:	The mammalian homolog of the Drosophila protein Maelstrom is expressed in the male germline and localizes to the sex body in spermatocytes and the chromatoid body in round spermatids. Similar to its expression in Drosophila, Maelstrom is a component of nuages, a germ-cell specific organelle and is thought to be essential for spermatogenesis and transposon repression during meiosis. In humans, Maelstrom has been found to be expressed only in the testis and in various cancer cell lines. Treatment of these cell lines with the demethylating agent 5'-Aza-2-Deoxycytidine significantly upregulated Maelstrom levels, indicating that its expression is regulated by DNA methylation.
Synonyms:	Maelstrom Antibody, CT128, SPATA35, Protein maelstrom homolog
Host Species:	Rabbit
Clonality:	Polyclonal
Format:	IgG

Target Details

Gene Name:	MAEL
Reactivity:	Human, Mouse, Rat
Immunogen Type:	Conjugated Peptide
Immunogen:	Anti-Maelstrom antibody was prepared from whole rabbit serum produced by repeated immunizations with a 16 amino acid synthetic peptide near the C-terminus of human Maelstrom.

Purity/Specificity:	Anti-Maelstrom Antibody was affinity purified from monospecific antiserum by immunoaffinity chromatography. Cross reactivity with Maelstrom from other sources has not been determined.
Relevant Links:	<ul style="list-style-type: none">• UniProtKB - Q96JY0• GeneID - 84944• NCBI - AAY82463

Application Details

Tested Applications:	ELISA, IF, IHC, WB
Application Note:	Anti-Maelstrom Antibody has been tested for use in ELISA, Western Blotting, Immunocytochemistry and Immunofluorescence. Specific conditions for reactivity should be optimized by the end user. Expect a band at approximately 49 kDa in Western Blots of specific cell lysates and tissues.
Assay Dilutions:	All assays should be optimized by the user. Recommended dilutions (if any) may be listed below.
ELISA:	1:10,000
IF:	20 µg/mL
WB:	1 µg/mL

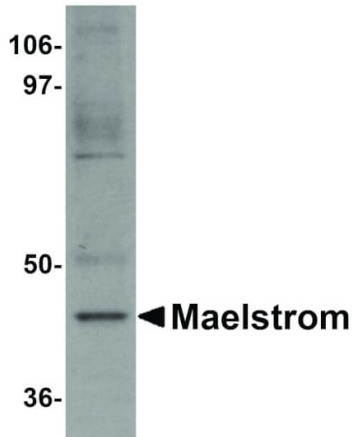
Formulation

Physical State:	Liquid (sterile filtered)
Concentration:	1 mg/mL by UV absorbance at 280 nm
Buffer:	0.01 M Sodium Phosphate, 0.25 M Sodium Chloride, pH 7.2
Preservative:	0.02% (w/v) Sodium Azide
Stabilizer:	None

Shipping & Handling

Shipping Condition:	Dry Ice
Storage Condition:	Store vial at -20° C prior to opening. Aliquot contents and freeze at -20° C or below for extended storage. Avoid cycles of freezing and thawing. Centrifuge product if not completely clear after standing at room temperature. This product is stable for several weeks at 4° C as an undiluted liquid. Dilute only prior to immediate use.
Expiration:	Expiration date is one (1) year from date of receipt.

Images

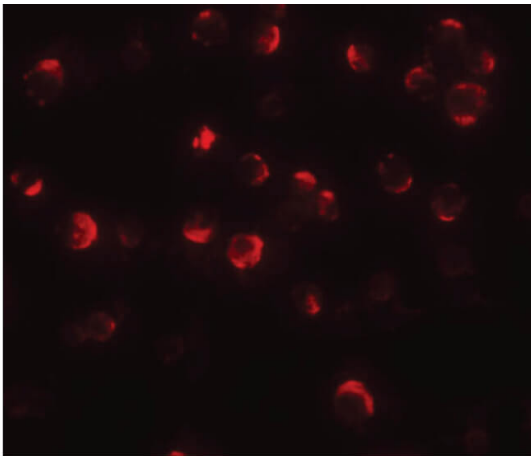


Western Blot

Western Blot of Maelstrom antibody. Lane 1: HeLa cell lysate with Maelstrom antibody at 1 $\mu\text{g}/\text{mL}$. Secondary antibody: Peroxidase rabbit secondary antibody at 1:10,000 for 45 min at RT. Block: 5% BLOTTO overnight at 4°C. Predicted/Observed size: 49 kDa, 45 kDa for Maelstrom. Other band(s): Maelstrom splice variants and isoforms.

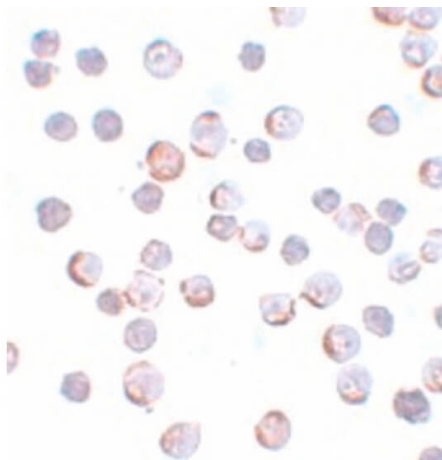
Immunofluorescence Microscopy

Immunofluorescence Microscopy of Maelstrom antibody. Tissue: HeLa cells. Fixation: 0.5% PFA. Antigen retrieval: not required. Primary antibody: Maelstrom antibody at 20 $\mu\text{g}/\text{mL}$ for 1 h at RT. Secondary antibody: Fluorescein rabbit secondary antibody at 1:10,000 for 45 min at RT. Localization: Maelstrom is nuclear and cytoplasmic. Staining: Maelstrom as red fluorescent signal.



Immunohistochemistry

Immunocytochemistry of Maelstrom antibody. Tissue: HeLa cells. Fixation: formalin fixed paraffin embedded. Antigen retrieval: not required. Primary antibody: Maelstrom antibody at 5 $\mu\text{g}/\text{mL}$ for 1 h at RT. Secondary antibody: Peroxidase rabbit secondary antibody at 1:10,000 for 45 min at RT. Localization: Maelstrom is nuclear and cytoplasmic. Staining: Maelstrom as precipitated brown signal with blue counterstain.



Disclaimer

This product is for research use only and is not intended for therapeutic or diagnostic applications. Please contact a technical service representative for more information. All products of animal origin manufactured by Rockland Immunochemicals are derived from starting materials of North American origin. Collection was performed in United States Department of Agriculture (USDA) inspected facilities and all materials have been inspected and certified to be free of disease and suitable for exportation. All properties listed are typical characteristics and are not specifications. All suggestions and data are offered in good faith but without guarantee as conditions and methods of use of our products are beyond our control. All claims must be made within 30 days following the date of delivery. The prospective user must determine the suitability of our materials before adopting them on a commercial scale. Suggested uses of our products are not recommendations to use our products in violation of any patent or as a license under any patent of Rockland Immunochemicals, Inc. If you require a commercial license to use this material and do not have one, then return this material, unopened to: Rockland Inc., P.O. BOX 5199, Limerick, Pennsylvania, USA.