

Datasheet for 600-401-CN9**LYRM2 Antibody****Overview**

Description:	Anti-LYRM2 (RABBIT) Antibody - 600-401-CN9
Item No.:	600-401-CN9
Size:	100 µg
Applications:	ELISA, IF, IHC, WB
Reactivity:	Human, Mouse, Rat
Host Species:	Rabbit

Product Details

Background:	The Lyr motif found in the LYR-motif containing protein family is similar to that found in the sacchromyces cerevisiae protein ISD11, an iron-sulfur protein in the mitochondria that is thought to play a role in iron homeostasis. No known function has been assigned to LYRM2, although LYRM1 is thought to be involved in preadipocyte progression and LYRM3 has been suggested to be a candidate gene for the branchio-oto-renal (BOR) syndrome.
Synonyms:	LYRM2 Antibody, DJ122O8.2, LYR motif-containing protein 2
Host Species:	Rabbit
Clonality:	Polyclonal
Format:	IgG

Target Details

Gene Name:	LYRM2
Reactivity:	Human, Mouse, Rat
Immunogen Type:	Conjugated Peptide
Immunogen:	Anti-LYRM2 antibody was prepared from whole rabbit serum produced by repeated immunizations with a 16 amino acid synthetic peptide near the C-terminus of human LYRM2.
Purity/Specificity:	Anti-LYRM2 Antibody was affinity purified from monospecific antiserum by immunoaffinity chromatography. Cross reactivity with LYRM2 from other sources has not been determined.
Relevant Links:	<ul style="list-style-type: none">• UniProtKB - Q9NU23

- [GeneID - 57226](#)
- [NCBI - NP_065199](#)

Application Details

Tested Applications:	ELISA, IF, IHC, WB
Application Note:	Anti-LYRM2 Antibody has been tested for use in ELISA, Western Blotting, Immunocytochemistry and Immunofluorescence. Specific conditions for reactivity should be optimized by the end user. Expect a band at approximately 10 kDa in Western Blots of specific cell lysates and tissues.
Assay Dilutions:	All assays should be optimized by the user. Recommended dilutions (if any) may be listed below.
ELISA:	1:10,000 - 1:20,000
IF:	20 µg/mL
WB:	1-2 µg/mL

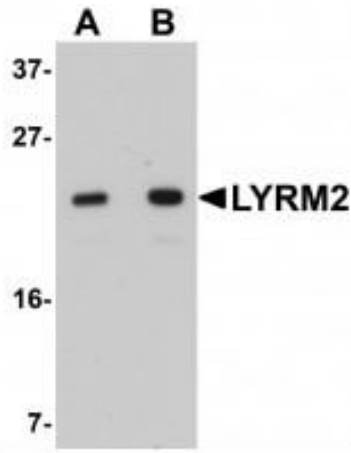
Formulation

Physical State:	Liquid (sterile filtered)
Concentration:	1mg/ml by UV absorbance at 280 nm
Buffer:	0.01 M Sodium Phosphate, 0.25 M Sodium Chloride, pH 7.2
Preservative:	0.02% (w/v) Sodium Azide
Stabilizer:	None

Shipping & Handling

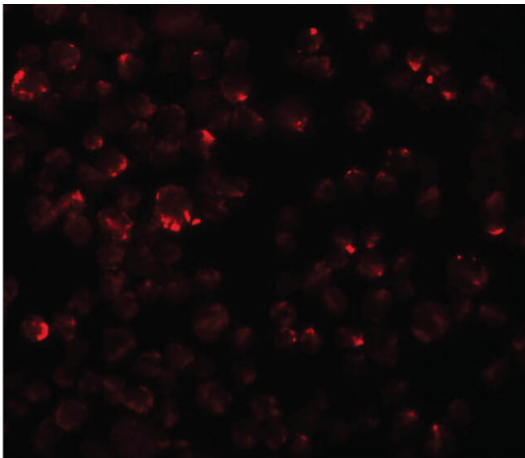
Shipping Condition:	Dry Ice
Storage Condition:	Store vial at -20° C prior to opening. Aliquot contents and freeze at -20° C or below for extended storage. Avoid cycles of freezing and thawing. Centrifuge product if not completely clear after standing at room temperature. This product is stable for several weeks at 4° C as an undiluted liquid. Dilute only prior to immediate use.
Expiration:	Expiration date is one (1) year from date of receipt.

Images



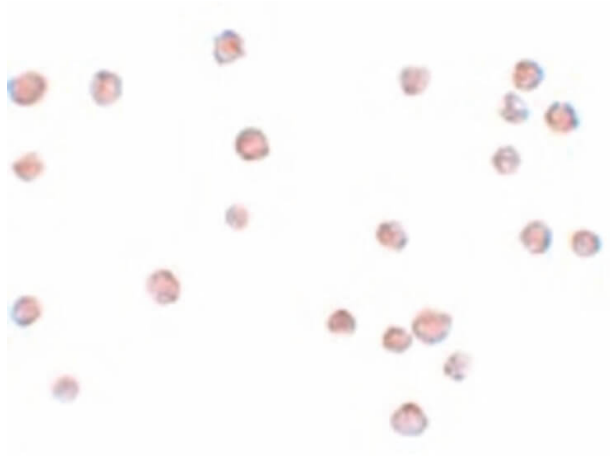
Western Blot

Western Blot of LYRM2 antibody. Lane 1: A549 cell lysate with LYRM2 antibody at 1 µg/mL. Lane 2: A549 cell lysate with LYRM2 antibody at 2 µg/mL. Secondary antibody: Peroxidase rabbit secondary antibody at 1:10,000 for 45 min at RT. Block: 5% BLOTTO overnight at 4°C. Predicted/Observed size: 10 kDa, 20 kDa for LYRM2. Other band(s): LYRM2 splice variants and isoforms.



Immunofluorescence Microscopy

Immunofluorescence Microscopy of LYRM2 antibody. Tissue: A549 cells. Fixation: 0.5% PFA. Antigen retrieval: not required. Primary antibody: LYRM2 antibody at 20 µg/mL for 1 h at RT. Secondary antibody: Fluorescein rabbit secondary antibody at 1:10,000 for 45 min at RT. Localization: LYRM2 is localized in the mitochondrion. Staining: LYRM2 as red fluorescent signal.



Immunohistochemistry

Immunocytochemistry of LYRM2 antibody. Tissue: A549 cells. Fixation: formalin fixed paraffin embedded. Antigen retrieval: not required. Primary antibody: LYRM2 antibody at 20 µg/mL for 1 h at RT. Secondary antibody: Peroxidase rabbit secondary antibody at 1:10,000 for 45 min at RT. Localization: LYRM2 is localized in the mitochondrion. Staining: LYRM2 as precipitated brown signal with blue counterstain.

Disclaimer

This product is for research use only and is not intended for therapeutic or diagnostic applications. Please contact a technical service representative for more information. All products of animal origin manufactured by Rockland Immunochemicals are derived from starting materials of North American origin. Collection was performed in United States Department of Agriculture (USDA) inspected facilities and all materials have been inspected and certified to be free of disease and suitable for exportation. All properties listed are typical characteristics and are not specifications. All suggestions and data are offered in good faith but without guarantee as conditions and methods of use of our products are beyond our control. All claims must be made within 30 days following the date of delivery. The prospective user must determine the suitability of our materials before adopting them on a commercial scale. Suggested uses of our products are not recommendations to use our products in violation of any patent or as a license under any patent of Rockland Immunochemicals, Inc. If you require a commercial license to use this material and do not have one, then return this material, unopened to: Rockland Inc., P.O. BOX 5199, Limerick, Pennsylvania, USA.