

Datasheet for 600-401-CN7**LY6K Antibody****Overview**

Description:	Anti-LY6K (RABBIT) Antibody - 600-401-CN7
Item No.:	600-401-CN7
Size:	100 µg
Applications:	ELISA, WB
Reactivity:	Human, Mouse, Rat
Host Species:	Rabbit

Product Details

Background:	The lymphocyte antigen 6 complex locus K (LY6K), a member of cancer-testis antigen was initially identified as a molecular marker for head-and-neck squamous cell carcinoma as well as breast cancer. LY6K is a GPI-anchored membrane protein that is specifically associated with germ cell marker TEX101 and is strongly observed in testis, but only weakly in other tissues. LY6K mRNA was found to be upregulated in numerous bladder cancers due to gene amplification. Furthermore, knockdown experiments using LY6K siRNA reduced cell growth, migration and invasion in bladder carcinoma cell lines, suggesting that LY6K contributes to bladder cancer development.
Synonyms:	LY6K Antibody, CT97, ly-6K, HSJ001348, CO16, Lymphocyte antigen 6K, Ly-6K
Host Species:	Rabbit
Clonality:	Polyclonal
Format:	IgG

Target Details

Gene Name:	LY6K
Reactivity:	Human, Mouse, Rat
Immunogen Type:	Conjugated Peptide
Immunogen:	Anti-LY6K antibody was prepared from whole rabbit serum produced by repeated immunizations with an 18 amino acid synthetic peptide near the N-terminus of human LY6K.

Purity/Specificity: Anti-LY6K Antibody was affinity purified from monospecific antiserum by immunoaffinity chromatography. Multiple isoforms of LY6K are known to exist.

Relevant Links:

- [UniProtKB - Q17RY6](#)
- [GeneID - 54742](#)
- [NCBI - EAW82311](#)

Application Details

Tested Applications: ELISA, WB

Application Note: Anti-LY6K Antibody has been tested for use in ELISA and Western Blotting. Specific conditions for reactivity should be optimized by the end user. Expect a band at approximately 19 kDa in Western Blots of specific cell lysates and tissues.

Assay Dilutions: All assays should be optimized by the user. Recommended dilutions (if any) may be listed below.

ELISA: 1:10,000-1:20,000

WB: 1 - 2 µg/ml

Formulation

Physical State: Liquid (sterile filtered)

Concentration: 1.0 mg/ml by UV absorbance at 280 nm

Buffer: 0.01 M Sodium Phosphate, 0.25 M Sodium Chloride, pH 7.2

Preservative: 0.02% (w/v) Sodium Azide

Stabilizer: None

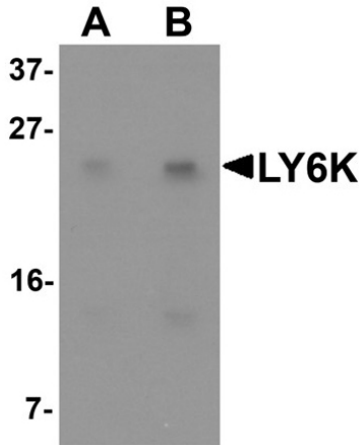
Shipping & Handling

Shipping Condition: Dry Ice

Storage Condition: Store vial at -20° C prior to opening. Aliquot contents and freeze at -20° C or below for extended storage. Avoid cycles of freezing and thawing. Centrifuge product if not completely clear after standing at room temperature. This product is stable for several weeks at 4° C as an undiluted liquid. Dilute only prior to immediate use.

Expiration: Expiration date is one (1) year from date of receipt.

Images



Western Blot

Western blot analysis of LY6K.

Load: HeLa cell lysate.

Primary Antibody: LY6K antibody at (A) 1 µg/mL and (B) 2 µg/mL.

Disclaimer

This product is for research use only and is not intended for therapeutic or diagnostic applications. Please contact a technical service representative for more information. All products of animal origin manufactured by Rockland Immunochemicals are derived from starting materials of North American origin. Collection was performed in United States Department of Agriculture (USDA) inspected facilities and all materials have been inspected and certified to be free of disease and suitable for exportation. All properties listed are typical characteristics and are not specifications. All suggestions and data are offered in good faith but without guarantee as conditions and methods of use of our products are beyond our control. All claims must be made within 30 days following the date of delivery. The prospective user must determine the suitability of our materials before adopting them on a commercial scale. Suggested uses of our products are not recommendations to use our products in violation of any patent or as a license under any patent of Rockland Immunochemicals, Inc. If you require a commercial license to use this material and do not have one, then return this material, unopened to: Rockland Inc., P.O. BOX 5199, Limerick, Pennsylvania, USA.