

Datasheet for 600-401-CN5**LXR-A Antibody****Overview**

Description:	Anti-LXR-A (RABBIT) Antibody - 600-401-CN5
Item No.:	600-401-CN5
Size:	100 µg
Applications:	ELISA, IF, IHC, WB
Reactivity:	Human, Mouse, Rat
Host Species:	Rabbit

Product Details

Background:	LXR-A belongs to the Liver X Receptor family that encodes highly homologous transcription factors. Like the highly homologous LXR-B, LXR-A forms heterodimers with the retinoic acid receptor RXRalpha, function as sensors for cellular oxysterols which when activated, increase the expression of genes that control sterol and fatty acid metabolism and homeostasis. Recent experiments have indicated that the LXRs can also modulate both innate and adaptive immune responses. Human and mouse tumors produce LXR ligands that inhibit CCR7 expression on maturing dendritic cells (DCs), thereby allowing tumor immunoescape. In mouse models, it was shown that ablating LXR-A signaling led to an immune-mediated strong inhibition of tumor growth, suggesting that manipulation of this pathway may be a viable anti-cancer approach.
Synonyms:	LXR-A Antibody, LXRA, LXR-a, RLD-1, LXRA, Oxysterols receptor LXR-alpha, Liver X receptor alpha
Host Species:	Rabbit
Clonality:	Polyclonal
Format:	IgG

Target Details

Gene Name:	NR1H3
Reactivity:	Human, Mouse, Rat
Immunogen Type:	Conjugated Peptide
Immunogen:	Anti-LXR-A antibody was prepared from whole rabbit serum produced by repeated immunizations with a 15 amino acid synthetic peptide from near the N-terminus human LXR-A.

Purity/Specificity: Anti-LXR-A Antibody was affinity purified from monospecific antiserum by immunoaffinity chromatography. Cross reactivity with LXR-A from other sources has not been determined.

Relevant Links:

- [UniProtKB - Q13133](#)
- [GeneID - 10062](#)
- [NCBI - NP_005684](#)

Application Details

Tested Applications: ELISA, IF, IHC, WB

Application Note: Anti-LXR-A Antibody has been tested for use in ELISA, Western Blotting, Immunohistochemistry and Immunofluorescence. Specific conditions for reactivity should be optimized by the end user. Expect a band at approximately 50 kDa in Western Blots of specific cell lysates and tissues.

Assay Dilutions: All assays should be optimized by the user. Recommended dilutions (if any) may be listed below.

ELISA: 1:10,000 - 1:20,000

IF: 20 µg/mL

IHC: 5 µg/mL

WB: 1-2 µg/mL

Formulation

Physical State: Liquid (sterile filtered)

Concentration: 1 mg/mL by UV absorbance at 280 nm

Buffer: 0.01 M Sodium Phosphate, 0.25 M Sodium Chloride, pH 7.2

Preservative: 0.02% (w/v) Sodium Azide

Stabilizer: None

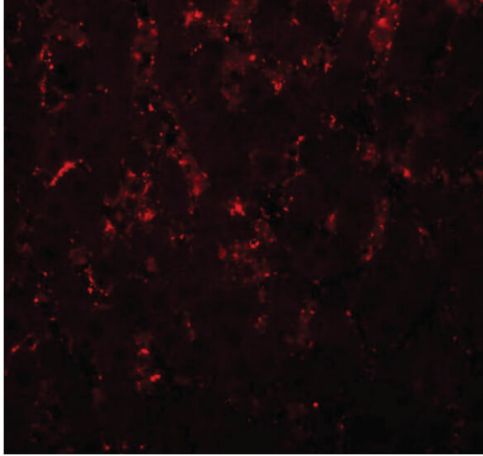
Shipping & Handling

Shipping Condition: Dry Ice

Storage Condition: Store vial at -20° C prior to opening. Aliquot contents and freeze at -20° C or below for extended storage. Avoid cycles of freezing and thawing. Centrifuge product if not completely clear after standing at room temperature. This product is stable for several weeks at 4° C as an undiluted liquid. Dilute only prior to immediate use.

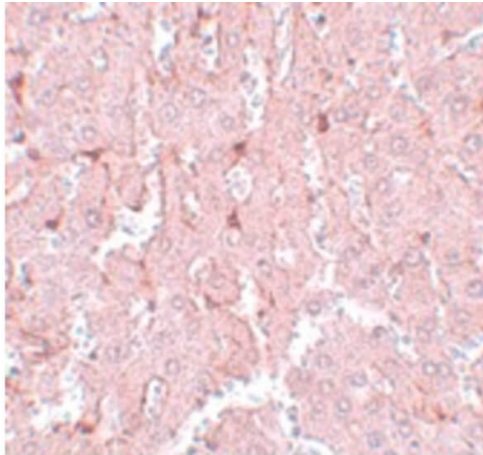
Expiration: Expiration date is one (1) year from date of receipt.

Images



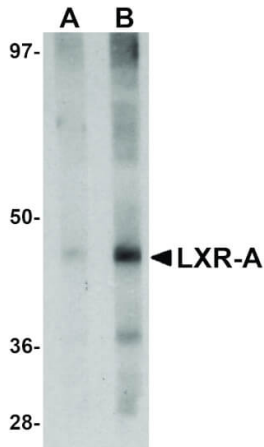
Immunofluorescence Microscopy

Immunofluorescence Microscopy of LXR-A antibody. Tissue: Rat liver tissue. Fixation: 0.5% PFA. Antigen retrieval: not required. Primary antibody: LXR-A antibody at 20 $\mu\text{g}/\text{mL}$ for 1 h at RT. Secondary antibody: Fluorescein rabbit secondary antibody at 1:10,000 for 45 min at RT. Localization: LXR-A is a nuclear. Staining: LXR-A as red fluorescent signal.



Immunohistochemistry

Immunohistochemistry of LXR-A antibody. Tissue: rat liver tissue. Fixation: formalin fixed paraffin embedded. Antigen retrieval: not required. Primary antibody: LXR-A antibody at 5 $\mu\text{g}/\text{mL}$ for 1 h at RT. Secondary antibody: Peroxidase rabbit secondary antibody at 1:10,000 for 45 min at RT. Localization: LXR-A is a nuclear. Staining: LXR-A as precipitated pink signal with purple nuclear counterstain.

**Western Blot**

Western Blot of LXR-A antibody. Lane 1: rat liver tissue lysate with LXR-A antibody at 1 $\mu\text{g}/\text{mL}$. Lane 2: rat liver tissue lysate with LXR-A antibody at 2 $\mu\text{g}/\text{mL}$. Secondary antibody: Peroxidase rabbit secondary antibody at 1:10,000 for 45 min at RT. Block: 5% BLOTTO overnight at 4°C. Predicted/Observed size: 50 kDa, 46 kDa for LXR-A. Other band(s): LXR-A splice variants and isoforms.

Disclaimer

This product is for research use only and is not intended for therapeutic or diagnostic applications. Please contact a technical service representative for more information. All products of animal origin manufactured by Rockland Immunochemicals are derived from starting materials of North American origin. Collection was performed in United States Department of Agriculture (USDA) inspected facilities and all materials have been inspected and certified to be free of disease and suitable for exportation. All properties listed are typical characteristics and are not specifications. All suggestions and data are offered in good faith but without guarantee as conditions and methods of use of our products are beyond our control. All claims must be made within 30 days following the date of delivery. The prospective user must determine the suitability of our materials before adopting them on a commercial scale. Suggested uses of our products are not recommendations to use our products in violation of any patent or as a license under any patent of Rockland Immunochemicals, Inc. If you require a commercial license to use this material and do not have one, then return this material, unopened to: Rockland Inc., P.O. BOX 5199, Limerick, Pennsylvania, USA.