

Datasheet for 600-401-CN2

LRRTM4 Antibody

Overview

Description:	Anti-LRRTM4 (RABBIT) Antibody - 600-401-CN2
Item No.:	600-401-CN2
Size:	100 µg
Applications:	ELISA, IF, IHC, WB
Reactivity:	Human
Host Species:	Rabbit

Product Details

Background:	The Leucine-rich repeat transmembrane neuronal proteins (LRRTMs) are differentially expressed in the nervous system and were recently found to instruct presynaptic and mediate postsynaptic glutamatergic differentiation, with LRRTM1 and LRRTM2 most potent at inducing presynaptic differentiation. Little is known about the function of LRRTM4; in mouse, it is expressed in the limb mesenchyme, neural tube, caudal mesoderm and in three distinct regions of the head. Later expression occurs in a subset of the developing sclerotome. Its similarity to other LRRTM family members suggests that LRRTM4 may also play a role in the development and maintenance of the vertebrate nervous system.
Synonyms:	LRRTM4 Antibody, Leucine-rich repeat transmembrane neuronal protein 4
Host Species:	Rabbit
Clonality:	Polyclonal
Format:	IgG

Target Details

Gene Name:	LRRTM4
Reactivity:	Human
Immunogen Type:	Conjugated Peptide
Immunogen:	Anti-LRRTM4 antibody was prepared from whole rabbit serum produced by repeated immunizations with a 16 amino acid synthetic peptide near the internal region of human LRRTM4.

Purity/Specificity: Anti-LRRTM4 Antibody was affinity purified from monospecific antiserum by immunoaffinity chromatography. At least two isoforms of LRRTM4 are known to exist; this antibody will both isoforms. LRRTM4 antibody is predicted to not cross-react with other LRRTM family members.

Relevant Links:

- [UniProtKB - Q86VH4](#)
- [GeneID - 80059](#)
- [NCBI - NP_001128217](#)

Application Details

Tested Applications: ELISA, IF, IHC, WB

Application Note: Anti-LRRTM4 Antibody has been tested for use in ELISA, Western Blotting, Immunohistochemistry and Immunofluorescence. Specific conditions for reactivity should be optimized by the end user. Expect a band at approximately 67 kDa in Western Blots of specific cell lysates and tissues.

Assay Dilutions: All assays should be optimized by the user. Recommended dilutions (if any) may be listed below.

ELISA: 1:10,000

IF: 20 µg/mL

IHC: 2.5 µg/mL

WB: 1 µg/mL

Formulation

Physical State: Liquid (sterile filtered)

Concentration: 1 mg/mL by UV absorbance at 280 nm

Buffer: 0.01 M Sodium Phosphate, 0.25 M Sodium Chloride, pH 7.2

Preservative: 0.02% (w/v) Sodium Azide

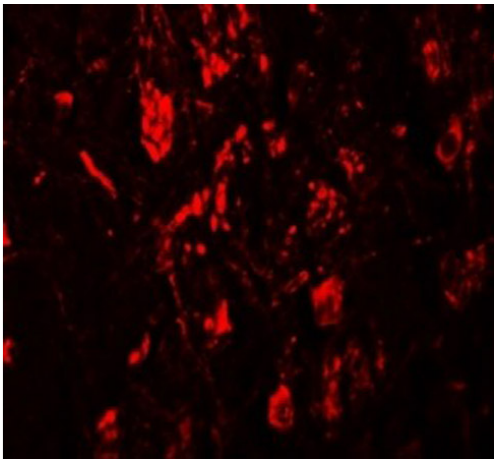
Stabilizer: None

Shipping & Handling

Shipping Condition: Dry Ice

Storage Condition:	Store vial at -20° C prior to opening. Aliquot contents and freeze at -20° C or below for extended storage. Avoid cycles of freezing and thawing. Centrifuge product if not completely clear after standing at room temperature. This product is stable for several weeks at 4° C as an undiluted liquid. Dilute only prior to immediate use.
Expiration:	Expiration date is one (1) year from date of receipt.

Images

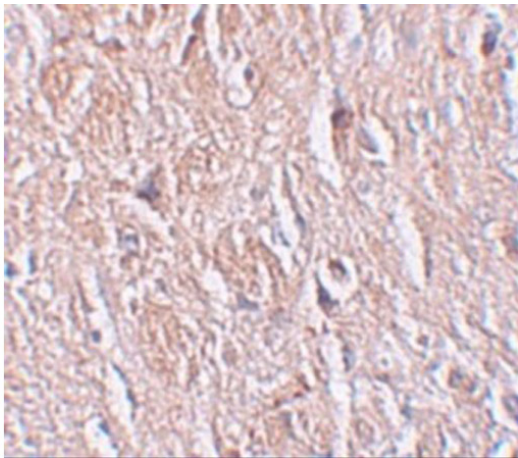


Immunofluorescence Microscopy

Immunofluorescence of LRRTM4.

Tissue: human brain tissue.

Primary Antibody: LRRTM4 antibody at 20 µg/mL.

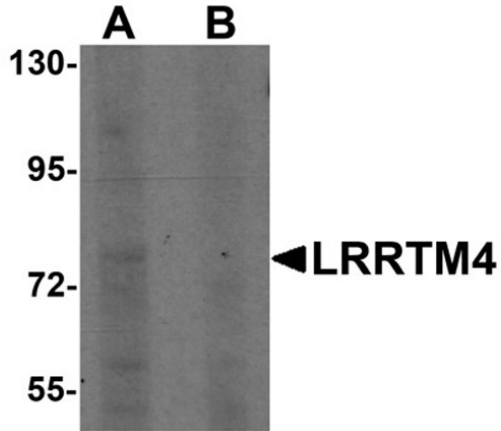


Immunohistochemistry

Immunohistochemistry of LRRTM4.

Tissue: human brain tissue.

Primary Antibody: LRRTM4 antibody at 2.5 µg/mL.

**Western Blot**

Western blot analysis of LRRTM4.

Load: HeLa cell lysate.

Primary Antibody: LRRTM4 antibody at 1 $\mu\text{g}/\text{mL}$ in (A) the absence and (B) the presence of blocking peptide.

Disclaimer

This product is for research use only and is not intended for therapeutic or diagnostic applications. Please contact a technical service representative for more information. All products of animal origin manufactured by Rockland Immunochemicals are derived from starting materials of North American origin. Collection was performed in United States Department of Agriculture (USDA) inspected facilities and all materials have been inspected and certified to be free of disease and suitable for exportation. All properties listed are typical characteristics and are not specifications. All suggestions and data are offered in good faith but without guarantee as conditions and methods of use of our products are beyond our control. All claims must be made within 30 days following the date of delivery. The prospective user must determine the suitability of our materials before adopting them on a commercial scale. Suggested uses of our products are not recommendations to use our products in violation of any patent or as a license under any patent of Rockland Immunochemicals, Inc. If you require a commercial license to use this material and do not have one, then return this material, unopened to: Rockland Inc., P.O. BOX 5199, Limerick, Pennsylvania, USA.