

## Datasheet for 600-401-CN1 LRRTM3 Antibody

### Overview

<b>Description:</b>	Anti-LRRTM3 (RABBIT) Antibody - 600-401-CN1
<b>Item No.:</b>	600-401-CN1
<b>Size:</b>	100 µg
<b>Applications:</b>	ELISA, IF, IHC, WB
<b>Reactivity:</b>	Human, Mouse, Rat
<b>Host Species:</b>	Rabbit

### Product Details

**Background:** The Leucine-rich repeat transmembrane neuronal proteins (LRRTMs) are differentially expressed in the nervous system and were recently found to instruct presynaptic and mediate postsynaptic glutamatergic differentiation, with LRRTM1 and LRRTM2 most potent at inducing presynaptic differentiation. Recent evidence suggests that LRRTM3 promotes the processing of amyloid-precursor protein (APP) by the beta-secretase BACE, leading to the proteolytic production of the Abeta42 peptide that is the main component of amyloid plaques. Furthermore, LRRTM3 maps to a region of chromosome 10 linked to both late-onset Alzheimer's disease (AD) and elevated plasma Abeta42 levels, suggesting that LRRTM3 is a functional and positional candidate gene for AD.

<b>Synonyms:</b>	LRRTM3 Antibody, Leucine-rich repeat transmembrane neuronal protein 3
<b>Host Species:</b>	Rabbit
<b>Clonality:</b>	Polyclonal
<b>Format:</b>	IgG

### Target Details

<b>Gene Name:</b>	LRRTM3
<b>Reactivity:</b>	Human, Mouse, Rat
<b>Immunogen Type:</b>	Conjugated Peptide
<b>Immunogen:</b>	Anti-LRRTM3 antibody was prepared from whole rabbit serum produced by repeated immunizations with a 18 amino acid synthetic peptide near the C-terminus of human LRRTM3.

**Purity/Specificity:** Anti-LRRTM3 Antibody was affinity purified from monospecific antiserum by immunoaffinity chromatography. At least two isoforms of LRRTM3 are known to exist; this antibody will only detect the larger isoform.

**Relevant Links:**

- [UniProtKB - Q86VH5](#)
- [GeneID - 347731](#)
- [NCBI - NP\\_821079](#)

## Application Details

**Tested Applications:** ELISA, IF, IHC, WB

**Application Note:** Anti-LRRTM3 Antibody has been tested for use in ELISA, Western Blotting, Immunohistochemistry and Immunofluorescence. Specific conditions for reactivity should be optimized by the end user. Expect a band at approximately 66 kDa in Western Blots of specific cell lysates and tissues.

**Assay Dilutions:** All assays should be optimized by the user. Recommended dilutions (if any) may be listed below.

**ELISA:** 1:5,000

**IF:** 20 µg/mL

**IHC:** 2.5 µg/mL

**WB:** 0.5 µg/mL

## Formulation

**Physical State:** Liquid (sterile filtered)

**Concentration:** 1.0 mg/mL by UV absorbance at 280 nm

**Buffer:** 0.01 M Sodium Phosphate, 0.25 M Sodium Chloride, pH 7.2

**Preservative:** 0.02% (w/v) Sodium Azide

**Stabilizer:** None

## Shipping & Handling

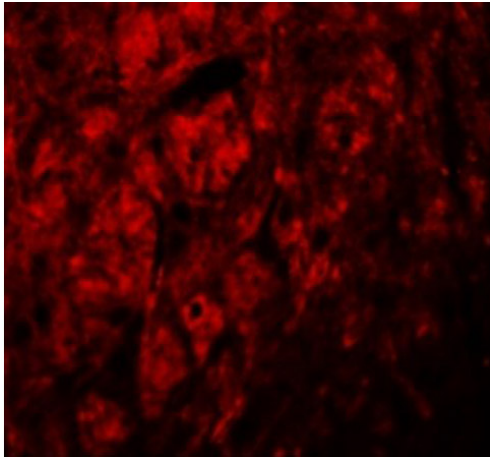
**Shipping Condition:** Wet Ice

**Storage Condition:** Antibody can be stored at 4°C up to one year. Antibodies should not be exposed to prolonged high temperatures.

**Expiration:** Expiration date is one (1) year from date of receipt.

---

## Images

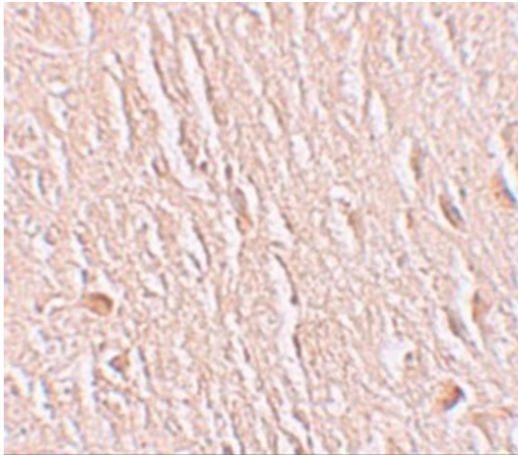


### **Immunofluorescence Microscopy**

Immunofluorescence of LRRTM3.

Tissue: human brain tissue.

Primary Antibody: LRRTM3 antibody at 20  $\mu\text{g}/\text{mL}$ .

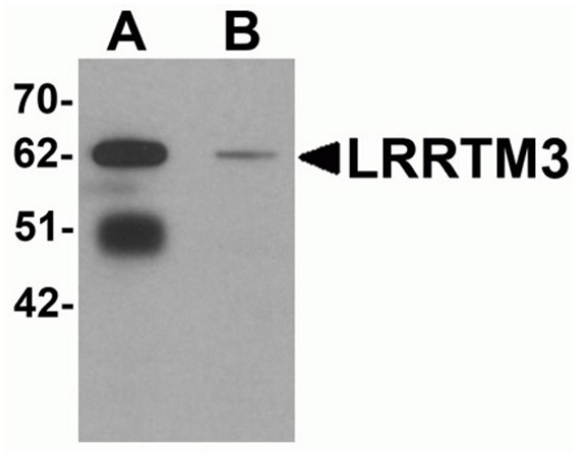


### **Immunohistochemistry**

Immunohistochemistry of LRRTM3.

Tissue: human brain tissue.

Primary Antibody: LRRTM3 antibody at 2.5  $\mu\text{g}/\text{mL}$ .

**Western Blot**

Western blot analysis of LRRTM3.

Load: mouse brain tissue lysate.

Primary Antibody: LRRTM3 antibody at 0.5 µg/mL in (A) the absence and (B) the presence of blocking peptide.

**Disclaimer**

This product is for research use only and is not intended for therapeutic or diagnostic applications. Please contact a technical service representative for more information. All products of animal origin manufactured by Rockland Immunochemicals are derived from starting materials of North American origin. Collection was performed in United States Department of Agriculture (USDA) inspected facilities and all materials have been inspected and certified to be free of disease and suitable for exportation. All properties listed are typical characteristics and are not specifications. All suggestions and data are offered in good faith but without guarantee as conditions and methods of use of our products are beyond our control. All claims must be made within 30 days following the date of delivery. The prospective user must determine the suitability of our materials before adopting them on a commercial scale. Suggested uses of our products are not recommendations to use our products in violation of any patent or as a license under any patent of Rockland Immunochemicals, Inc. If you require a commercial license to use this material and do not have one, then return this material, unopened to: Rockland Inc., P.O. BOX 5199, Limerick, Pennsylvania, USA.