

Datasheet for 600-401-CM1**LRFN2 Antibody****Overview**

Description:	Anti-LRFN2 (RABBIT) Antibody - 600-401-CM1
Item No.:	600-401-CM1
Size:	100 µg
Applications:	ELISA, IF, IHC, WB
Reactivity:	Human, Mouse, Rat
Host Species:	Rabbit

Product Details

Background:	LRFN2 is one of a family of five transmembrane glycoproteins that are highly expressed in neuronal tissues. LRFN proteins share leucine-rich repeat (LRR)-immunoglobulin-like (Ig)-fibronectin type III (Fn)-transmembrane domain structure with other members of the LRR-Ig-Fn protein superfamily such as the Slitrk family of proteins. Expression of LRFN1, -3, and -4 mRNA was detected in embryonic neuronal cells, while Lrfn2 and Lrfn5 expression was primarily restricted to more mature cells. LRFN1, -2, and -4 bound to PDZ domains of postsynaptic PSD95, re-distributing PSD95 to the cell periphery. It has been suggested that the Lrfn proteins play a role in the developing and/or mature vertebrate nervous system.
Synonyms:	LRFN2 Antibody, SALM1, FIGLER2, KIAA1246, SALM1, Leucine-rich repeat and fibronectin type-III domain-containing protein 2, Synaptic adhesion-like molecule 1
Host Species:	Rabbit
Clonality:	Polyclonal
Format:	IgG

Target Details

Gene Name:	LRFN2
Reactivity:	Human, Mouse, Rat
Immunogen Type:	Conjugated Peptide
Immunogen:	Anti-LRFN2 antibody was prepared from whole rabbit serum produced by repeated immunizations with a 14 amino acid synthetic peptide near the C-terminus of human LRFN2.

Purity/Specificity: Anti-LRFN2 Antibody was affinity purified from monospecific antiserum by immunoaffinity chromatography. At least two isoforms of LRFN2 are known to exist. This antibody is predicted to not cross-react with other members of the LRFN family.

Relevant Links:

- [UniProtKB - Q9ULH4](#)
- [GeneID - 57497](#)
- [NCBI - Q9ULH4](#)

Application Details

Tested Applications: ELISA, IF, IHC, WB

Application Note: Anti-LRFN2 Antibody has been tested for use in ELISA, Western Blotting, Immunohistochemistry and Immunofluorescence. Specific conditions for reactivity should be optimized by the end user. Expect a band at approximately 85 kDa in Western Blots of specific cell lysates and tissues.

Assay Dilutions: All assays should be optimized by the user. Recommended dilutions (if any) may be listed below.

ELISA: 1:10,000 - 1:20,000

IF: 20 µg/mL

IHC: 2.5 µg/mL

WB: 1-2 µg/mL

Formulation

Physical State: Liquid (sterile filtered)

Concentration: 1 mg/mL by UV absorbance at 280 nm

Buffer: 0.01 M Sodium Phosphate, 0.25 M Sodium Chloride, pH 7.2

Preservative: 0.02% (w/v) Sodium Azide

Stabilizer: None

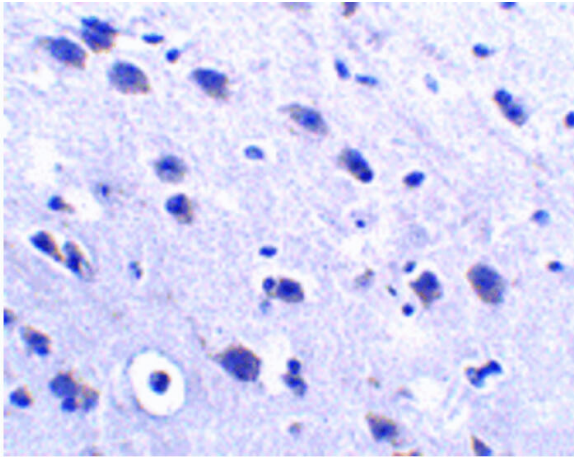
Shipping & Handling

Shipping Condition: Dry Ice

Storage Condition: Store vial at -20° C prior to opening. Aliquot contents and freeze at -20° C or below for extended storage. Avoid cycles of freezing and thawing. Centrifuge product if not completely clear after standing at room temperature. This product is stable for several weeks at 4° C as an undiluted liquid. Dilute only prior to immediate use.

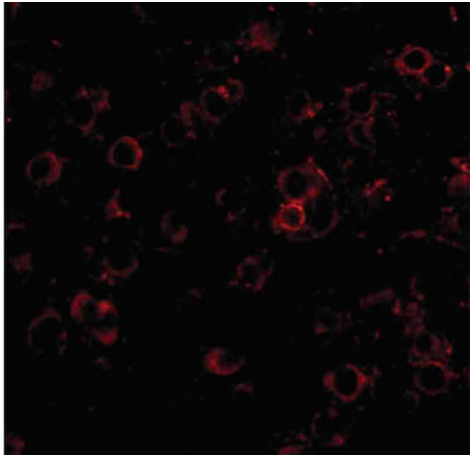
Expiration: Expiration date is one (1) year from date of receipt.

Images



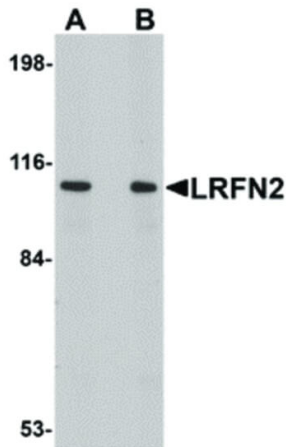
Immunohistochemistry

Immunohistochemistry of LRFN2 antibody. Tissue: mouse brain tissue. Fixation: formalin fixed paraffin embedded. Antigen retrieval: not required. Primary antibody: LRFN2 antibody at 2.5 µg/mL for 1 h at RT. Secondary antibody: Peroxidase rabbit secondary antibody at 1:10,000 for 45 min at RT. Localization: LRFN2 is a single pass membrane protein. Staining: LRFN2 as precipitated blue signal with pink counterstain.



Immunofluorescence Microscopy

Immunofluorescence Microscopy of LRFN2 antibody. Tissue: human breast carcinoma. Fixation: 0.5% PFA. Antigen retrieval: not required. Primary antibody: LRFN2 antibody at 20 µg/mL for 1 h at RT. Secondary antibody: Fluorescein rabbit secondary antibody at 1:10,000 for 45 min at RT. Localization: LRFN2 is a single pass membrane protein. Staining: LRFN2 as red fluorescent signal.

**Western Blot**

Western Blot of LRFN2 antibody. Lane 1: Rat brain lysate with LRFN2 at 1 $\mu\text{g}/\text{mL}$. Lane 2: Rat brain lysate with LRFN2 at 2 $\mu\text{g}/\text{mL}$. Load: 35 μg per lane. Secondary antibody: Peroxidase rabbit secondary antibody at 1:10,000 for 45 min at RT. Block: 5% BLOTTO overnight at 4°C. Predicted/Observed size: 85 kDa, 110 kDa for LRFN2. Other band(s): none.

Disclaimer

This product is for research use only and is not intended for therapeutic or diagnostic applications. Please contact a technical service representative for more information. All products of animal origin manufactured by Rockland Immunochemicals are derived from starting materials of North American origin. Collection was performed in United States Department of Agriculture (USDA) inspected facilities and all materials have been inspected and certified to be free of disease and suitable for exportation. All properties listed are typical characteristics and are not specifications. All suggestions and data are offered in good faith but without guarantee as conditions and methods of use of our products are beyond our control. All claims must be made within 30 days following the date of delivery. The prospective user must determine the suitability of our materials before adopting them on a commercial scale. Suggested uses of our products are not recommendations to use our products in violation of any patent or as a license under any patent of Rockland Immunochemicals, Inc. If you require a commercial license to use this material and do not have one, then return this material, unopened to: Rockland Inc., P.O. BOX 5199, Limerick, Pennsylvania, USA.