

Datasheet for 600-401-CK8**LIMP2 Antibody****Overview**

Description:	Anti-LIMP2 (RABBIT) Antibody - 600-401-CK8
Item No.:	600-401-CK8
Size:	100 µg
Applications:	ELISA, IHC, WB
Reactivity:	Human, Mouse
Host Species:	Rabbit

Product Details

Background:	The lysosomal integral membrane protein 2 (LIMP2) is a heavily glycosylated type III transmembrane protein, the majority of which exists in the lumen of the lysosome and a cytoplasmic domain of approximately 20 amino acids. A deficiency of LIMP2 in mice causes uretic pelvic junction obstruction, deafness, and peripheral neuropathy associated with impaired vesicular trafficking and distribution of apically expressed proteins. More recently, LIMP2 was shown to act as a receptor to bind beta-glucocerebrosidase, the enzyme defective in Gaucher disease, a lysosomal storage disorder. LIMP2-deficient mice showed missorted as well as secreted beta-glucocerebrosidase, suggesting that LIMP2 also functions as the mannose-6-phosphate-independent trafficking receptor.
Synonyms:	LIMP2 Antibody, AMRF, EPM4, LGP85, CD36L2, HLGP85, LIMP-2, LIMPII, SR-BII, LIMP2, Lysosome membrane protein 2, 85 kDa lysosomal membrane sialoglycoprotein
Host Species:	Rabbit
Clonality:	Polyclonal
Format:	IgG

Target Details

Gene Name:	SCARB2
Reactivity:	Human, Mouse
Immunogen Type:	Conjugated Peptide

Immunogen:	Anti-LIMP2 antibody was prepared from whole rabbit serum produced by repeated immunizations with a 18 amino acid synthetic peptide from near the C-terminus of human LIMP2.
Purity/Specificity:	Anti-LIMP2 Antibody was affinity purified from monospecific antiserum by immunoaffinity chromatography. Cross reactivity with LIMP2 from other sources has not been determined.
Relevant Links:	<ul style="list-style-type: none">• UniProtKB - Q14108• GeneID - 950• NCBI - AAH21892

Application Details

Tested Applications:	ELISA, IHC, WB
Application Note:	Anti-LIMP2 Antibody has been tested for use in ELISA, Western Blotting, and Immunohistochemistry. Specific conditions for reactivity should be optimized by the end user. Expect a band at approximately 55 kDa in Western Blots of specific cell lysates and tissues.
Assay Dilutions:	All assays should be optimized by the user. Recommended dilutions (if any) may be listed below.
ELISA:	1:10,000 - 1:20,000
IHC:	10 µg/mL
WB:	1-2 µg/mL

Formulation

Physical State:	Liquid (sterile filtered)
Concentration:	1 mg/mL by UV absorbance at 280 nm
Buffer:	0.01 M Sodium Phosphate, 0.25 M Sodium Chloride, pH 7.2
Preservative:	0.02% (w/v) Sodium Azide
Stabilizer:	None

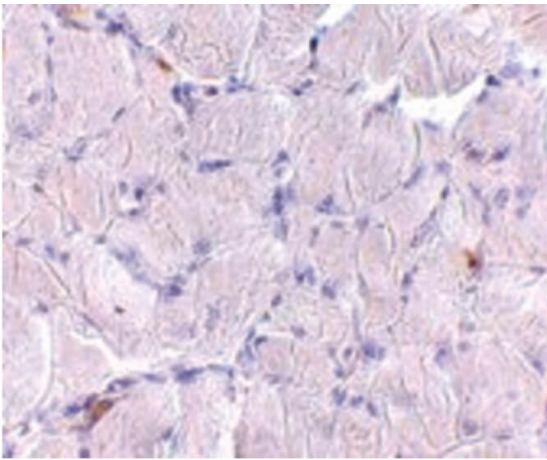
Shipping & Handling

Shipping Condition:	Dry Ice
----------------------------	---------

Storage Condition: Store vial at -20° C prior to opening. Aliquot contents and freeze at -20° C or below for extended storage. Avoid cycles of freezing and thawing. Centrifuge product if not completely clear after standing at room temperature. This product is stable for several weeks at 4° C as an undiluted liquid. Dilute only prior to immediate use.

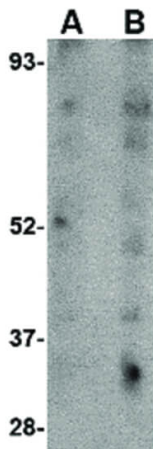
Expiration: Expiration date is one (1) year from date of receipt.

Images



Immunohistochemistry

Immunohistochemistry of LIMP2 antibody. Tissue: Human skeletal muscle tissue. Fixation: formalin fixed paraffin embedded. Antigen retrieval: not required. Primary antibody: LIMP2 antibody at 10 µg/mL for 1 h at RT. Secondary antibody: Peroxidase rabbit secondary antibody at 1:10,000 for 45 min at RT. Staining: LIMP2 as a precipitated red signal with hematoxylin purple nuclear counterstain.



Western Blot

Western Blot of LIMP2 antibody. Lane A: Human skeletal muscle tissue lysate at 1 µg/mL. Lane B: Human skeletal muscle tissue lysate at 2 µg/mL. Load: 35 µg per lane. Secondary antibody: Peroxidase rabbit secondary antibody at 1:10,000 for 45 min at RT. Block: 5% BLOTTO overnight at 4°C. Predicted/Observed size: 54.2 kDa, ~80 kDa for LIMP2.

Disclaimer

This product is for research use only and is not intended for therapeutic or diagnostic applications. Please contact a technical service representative for more information. All products of animal origin manufactured by Rockland Immunochemicals are derived from starting materials of North American origin. Collection was performed in United States Department of Agriculture (USDA) inspected facilities and all materials have been inspected and certified to be free of disease and suitable for exportation. All properties listed are typical characteristics and are not specifications. All suggestions and data are offered in good faith but without guarantee as conditions and methods of use of our products are beyond our control. All claims must be made within 30 days following the date of delivery. The prospective user must determine the suitability of our materials before adopting them on a commercial scale. Suggested uses of our products are not recommendations to use our products in violation of any patent or as a license under any patent of Rockland Immunochemicals, Inc. If you require a commercial license to use this material and do not have one, then return this material, unopened to: Rockland Inc., P.O. BOX 5199, Limerick, Pennsylvania, USA.