

Datasheet for 600-401-CK2**LGP2 Antibody****Overview**

Description:	Anti-LGP2 (RABBIT) Antibody - 600-401-CK2
Item No.:	600-401-CK2
Size:	100 µg
Applications:	ELISA, WB
Reactivity:	Human, Mouse, Rat
Host Species:	Rabbit

Product Details

Background:	Anti-viral innate immune responses are triggered by pathogen-associated molecular patterns (such as the accumulation of intracellular nucleic acids resulting from virus infections) and represent the first line of defense against numerous infectious organisms. The Toll-like receptors (TLR) 3, 7, 8, and 9 are expressed in immune cells and function as transmembrane pattern recognition receptors to detect foreign nucleic acids. Other proteins that play similar roles, such as RIG-1 and MDA5 are members of a CARD-helicase family and are expressed in the cytoplasm. A third protein, LGP2, is similar to RIG-1 and MDA5, except for lacking a homologous CARD domain. It is thought to act as an element of negative-feedback regulation of intracellular antiviral signaling. At least four isoforms of LGP2 are known to exist.
Synonyms:	LGP2 Antibody, LGP2, RLR-3, D11LGP2, D11lgp2e, D11LGP2E, LGP2, Probable ATP-dependent RNA helicase DHX58, Probable ATP-dependent helicase LGP2
Host Species:	Rabbit
Clonality:	Polyclonal
Format:	IgG

Target Details

Gene Name:	DHX58
Reactivity:	Human, Mouse, Rat
Immunogen Type:	Conjugated Peptide

Immunogen:	Anti-LGP2 antibody was prepared from whole rabbit serum produced by repeated immunizations with a 14 amino acid synthetic peptide from near the N-terminus of human LGP2.
Purity/Specificity:	Anti-LGP2 Antibody was affinity purified from monospecific antiserum by immunoaffinity chromatography. Cross reactivity with LGP2 from other sources has not been determined.
Relevant Links:	<ul style="list-style-type: none">• UniProtKB - Q96C10• GeneID - 79132• NCBI - EAW60798

Application Details

Tested Applications:	ELISA, WB
Application Note:	Anti-LGP2 Antibody has been tested for use in ELISA and Western Blotting. Specific conditions for reactivity should be optimized by the end user. Expect a band at approximately 77 kDa in Western Blots of specific cell lysates and tissues.
Assay Dilutions:	All assays should be optimized by the user. Recommended dilutions (if any) may be listed below.
ELISA:	1:5000 - 1:10000
WB:	0.5-1 µg/mL

Formulation

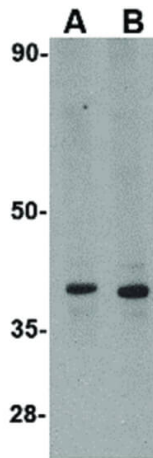
Physical State:	Liquid (sterile filtered)
Concentration:	1 mg/mL by UV absorbance at 280 nm
Buffer:	0.01 M Sodium Phosphate, 0.25 M Sodium Chloride, pH 7.2
Preservative:	0.02% (w/v) Sodium Azide
Stabilizer:	None

Shipping & Handling

Shipping Condition:	Dry Ice
Storage Condition:	Store vial at -20° C prior to opening. Aliquot contents and freeze at -20° C or below for extended storage. Avoid cycles of freezing and thawing. Centrifuge product if not completely clear after standing at room temperature. This product is stable for several weeks at 4° C as an undiluted liquid. Dilute only prior to immediate use.

Expiration: Expiration date is one (1) year from date of receipt.

Images



Western Blot

Western Blot of LGP2 antibody. Lane A: MDA-MB-361 cell lysate at 0.5 µg/mL. Lane B: MDA-MB-361 cell lysate at 1 µg/mL. Load: 35 µg per lane. Secondary antibody: Peroxidase rabbit secondary antibody at 1:10,000 for 45 min at RT. Block: 5% BLOTTO overnight at 4°C. Predicted/Observed size: 76.6 kDa, ~40 kDa for LGP2.

Disclaimer

This product is for research use only and is not intended for therapeutic or diagnostic applications. Please contact a technical service representative for more information. All products of animal origin manufactured by Rockland Immunochemicals are derived from starting materials of North American origin. Collection was performed in United States Department of Agriculture (USDA) inspected facilities and all materials have been inspected and certified to be free of disease and suitable for exportation. All properties listed are typical characteristics and are not specifications. All suggestions and data are offered in good faith but without guarantee as conditions and methods of use of our products are beyond our control. All claims must be made within 30 days following the date of delivery. The prospective user must determine the suitability of our materials before adopting them on a commercial scale. Suggested uses of our products are not recommendations to use our products in violation of any patent or as a license under any patent of Rockland Immunochemicals, Inc. If you require a commercial license to use this material and do not have one, then return this material, unopened to: Rockland Inc., P.O. BOX 5199, Limerick, Pennsylvania, USA.