

**Datasheet for 600-401-CJ8****LGI3 Antibody****Overview**

<b>Description:</b>	Anti-LGI3 (RABBIT) Antibody - 600-401-CJ8
<b>Item No.:</b>	600-401-CJ8
<b>Size:</b>	100 µg
<b>Applications:</b>	ELISA, WB
<b>Reactivity:</b>	Human, Mouse, Rat
<b>Host Species:</b>	Rabbit

**Product Details**

<b>Background:</b>	The leucine-rich, glioma inactivated gene 3 (LGI3) is a member of the LGI family in which LGI1 is the exemplar. The LGI family consists of four of highly related proteins containing leucine-rich repeats (LRRs) which are highly similar to other transmembrane signaling molecules and receptors. LGI1 has been identified as a candidate tumor suppressor gene for glioma and plays a role in autodominate lateral temporal epilepsy (ADTLE), an epileptic syndrome characterized by focal seizures with predominant auditory symptoms. Despite its high homology with LGI1 and similar pattern of expression, mutations in LGI3 have not been found to be associated with ADTLE. LGI3 expression is induced in rat astrocyte cultures by the amyloid beta (Abeta) peptide and accumulated on neuronal plasma membranes of aged monkey brains and co-localized with Abeta.
<b>Synonyms:</b>	LGI3 Antibody, LGIL4, LGIL4, UNQ8190/PRO23199, Leucine-rich repeat LGI family member 3, LGI1-like protein 4
<b>Host Species:</b>	Rabbit
<b>Clonality:</b>	Polyclonal
<b>Format:</b>	IgG

**Target Details**

<b>Gene Name:</b>	LGI3
<b>Reactivity:</b>	Human, Mouse, Rat
<b>Immunogen Type:</b>	Conjugated Peptide

<b>Immunogen:</b>	Anti-LGI3 antibody was prepared from whole rabbit serum produced by repeated immunizations with a 12 amino acid synthetic peptide from near the internal region of human LGI3.
<b>Purity/Specificity:</b>	Anti-LGI3 Antibody was affinity purified from monospecific antiserum by immunoaffinity chromatography. Two isoforms of LGI3 are known to exist; this LGI3 antibody will recognize both. This LGI3 antibody is predicted to be specific to LGI3 and not recognize other LGI proteins. The observed higher molecular weight band may represent a post-translationally modified form of LGI3.
<b>Relevant Links:</b>	<ul style="list-style-type: none"><li>• <a href="#">UniProtKB - Q8N145</a></li><li>• <a href="#">GeneID - 203190</a></li><li>• <a href="#">NCBI - AAQ88483</a></li></ul>

## Application Details

<b>Tested Applications:</b>	ELISA, WB
<b>Application Note:</b>	Anti-LGI3 Antibody has been tested for use in ELISA and Western Blotting. Specific conditions for reactivity should be optimized by the end user. Expect a band at approximately 62 kDa in Western Blots of specific cell lysates and tissues.
<b>Assay Dilutions:</b>	All assays should be optimized by the user. Recommended dilutions (if any) may be listed below.
<b>ELISA:</b>	1:10,000
<b>WB:</b>	1 µg/mL

## Formulation

<b>Physical State:</b>	Liquid (sterile filtered)
<b>Concentration:</b>	1 mg/mL by UV absorbance at 280 nm
<b>Buffer:</b>	0.01 M Sodium Phosphate, 0.25 M Sodium Chloride, pH 7.2
<b>Preservative:</b>	0.02% (w/v) Sodium Azide
<b>Stabilizer:</b>	None

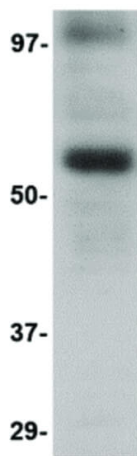
## Shipping & Handling

<b>Shipping Condition:</b>	Dry Ice
----------------------------	---------

**Storage Condition:** Store vial at -20° C prior to opening. Aliquot contents and freeze at -20° C or below for extended storage. Avoid cycles of freezing and thawing. Centrifuge product if not completely clear after standing at room temperature. This product is stable for several weeks at 4° C as an undiluted liquid. Dilute only prior to immediate use.

**Expiration:** Expiration date is one (1) year from date of receipt.

## Images



### Western Blot

Western Blot of LGI3 antibody. Lane 1: Human brain tissue lysate at 1 µg/mL. Load: 35 µg per lane. Secondary antibody: Peroxidase rabbit secondary antibody at 1:10,000 for 45 min at RT. Block: 5% BLOTTO overnight at 4°C. Predicted/Observed size: 61.7 kDa, ~58 kDa for LGI3.

## Disclaimer

This product is for research use only and is not intended for therapeutic or diagnostic applications. Please contact a technical service representative for more information. All products of animal origin manufactured by Rockland Immunochemicals are derived from starting materials of North American origin. Collection was performed in United States Department of Agriculture (USDA) inspected facilities and all materials have been inspected and certified to be free of disease and suitable for exportation. All properties listed are typical characteristics and are not specifications. All suggestions and data are offered in good faith but without guarantee as conditions and methods of use of our products are beyond our control. All claims must be made within 30 days following the date of delivery. The prospective user must determine the suitability of our materials before adopting them on a commercial scale. Suggested uses of our products are not recommendations to use our products in violation of any patent or as a license under any patent of Rockland Immunochemicals, Inc. If you require a commercial license to use this material and do not have one, then return this material, unopened to: Rockland Inc., P.O. BOX 5199, Limerick, Pennsylvania, USA.