

**Datasheet for 600-401-CJ4****LGI1 Antibody****Overview**

<b>Description:</b>	Anti-LGI1 (RABBIT) Antibody - 600-401-CJ4
<b>Item No.:</b>	600-401-CJ4
<b>Size:</b>	100 µg
<b>Applications:</b>	ELISA, IF, IHC, WB
<b>Reactivity:</b>	Human, Mouse, Rat
<b>Host Species:</b>	Rabbit

**Product Details**

<b>Background:</b>	The leucine-rich, glioma inactivated gene 1 (LGI1) was first identified as a candidate tumor suppressor gene for glioma and may play a role in other cancers. LGI1 is a member of a family of highly related proteins containing leucine-rich repeats (LRRs) which are highly similar to other transmembrane signaling molecules and receptors. LGI1 serves as a ligand to ADAM22, a metalloprotease localized at the synapse. Mutations in LGI1 account for nearly half of autosomal dominant lateral temporal epilepsy (ADLTE), an epileptic syndrome characterized by focal seizures with predominant auditory symptoms. Two isoforms of LGI1 are known to exist; this LGI1 antibody will recognize only the longer form.
<b>Synonyms:</b>	LGI1 Antibody, EPT, ETL1, ADLTE, ADPAEF, ADPEAF, IB1099, EPITEMPIN, EPT, UNQ775/PRO1569, Leucine-rich glioma-inactivated protein 1, Epitempin-1
<b>Host Species:</b>	Rabbit
<b>Clonality:</b>	Polyclonal
<b>Format:</b>	IgG

**Target Details**

<b>Gene Name:</b>	LGI1
<b>Reactivity:</b>	Human, Mouse, Rat
<b>Immunogen Type:</b>	Conjugated Peptide

<b>Immunogen:</b>	Anti-LGI1 antibody was prepared from whole rabbit serum produced by repeated immunizations with a 14 amino acid synthetic peptide from near the internal region of human LGI1.
<b>Purity/Specificity:</b>	Anti-LGI1 Antibody was affinity purified from monospecific antiserum by immunoaffinity chromatography. This LGI1 antibody is predicted to be specific to LGI1 and not recognize other LGI proteins.
<b>Relevant Links:</b>	<ul style="list-style-type: none"><li>• <a href="#">UniProtKB - O95970</a></li><li>• <a href="#">GeneID - 9211</a></li><li>• <a href="#">NCBI - AAQ89244</a></li></ul>

## Application Details

<b>Tested Applications:</b>	ELISA, IF, IHC, WB
<b>Application Note:</b>	Anti-LGI1 Antibody has been tested for use in ELISA, Western Blotting, Immunohistochemistry and Immunofluorescence. Specific conditions for reactivity should be optimized by the end user. Expect a band at approximately 64 kDa in Western Blots of specific cell lysates and tissues.
<b>Assay Dilutions:</b>	All assays should be optimized by the user. Recommended dilutions (if any) may be listed below.
<b>ELISA:</b>	1:20,000
<b>IF:</b>	20 µg/mL
<b>IHC:</b>	2.5 µg/mL
<b>WB:</b>	2 µg/mL

## Formulation

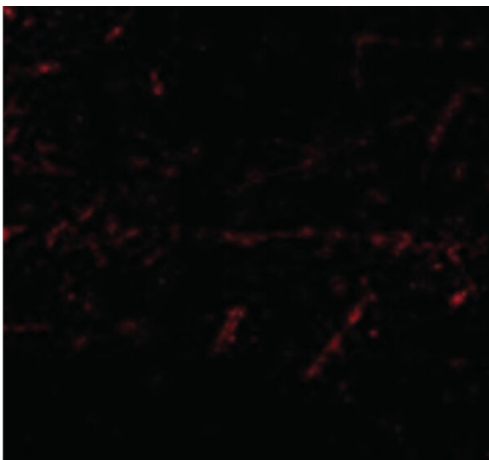
<b>Physical State:</b>	Liquid (sterile filtered)
<b>Concentration:</b>	1.0 mg/ml by UV absorbance at 280 nm
<b>Buffer:</b>	0.01 M Sodium Phosphate, 0.25 M Sodium Chloride, pH 7.2
<b>Preservative:</b>	0.02% (w/v) Sodium Azide
<b>Stabilizer:</b>	None

## Shipping & Handling

<b>Shipping Condition:</b>	Dry Ice
----------------------------	---------

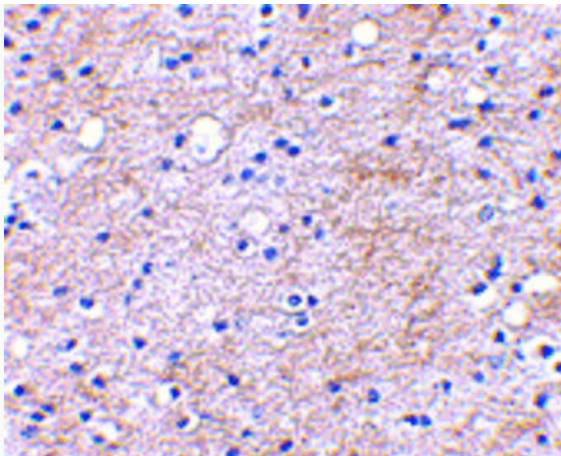
<b>Storage Condition:</b>	Store vial at -20° C prior to opening. Aliquot contents and freeze at -20° C or below for extended storage. Avoid cycles of freezing and thawing. Centrifuge product if not completely clear after standing at room temperature. This product is stable for several weeks at 4° C as an undiluted liquid. Dilute only prior to immediate use.
<b>Expiration:</b>	Expiration date is one (1) year from date of receipt.

## Images



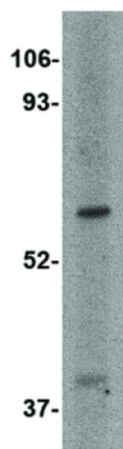
### Immunofluorescence Microscopy

Immunofluorescence Microscopy of LGI1 antibody. Tissue: Human brain cells. Fixation: 0.5% PFA. Antigen retrieval: not required. Primary antibody: LGI1 antibody at 20 µg/mL for 1 h at RT. Secondary antibody: Fluorescein rabbit secondary antibody at 1:10,000 for 45 min at RT. Staining: LGI1 as a red fluorescent signal.



### Immunohistochemistry

Immunohistochemistry of LGI1 antibody. Tissue: Human brain tissue. Fixation: formalin fixed paraffin embedded. Antigen retrieval: not required. Primary antibody: LGI1 antibody at 2.5 µg/mL for 1 h at RT. Secondary antibody: Peroxidase rabbit secondary antibody at 1:10,000 for 45 min at RT. Localization: LGI1 is nuclear and occasionally cytoplasmic. Staining: LGI1 as a precipitated red signal with hematoxylin purple nuclear counterstain.

**Western Blot**

Western Blot of LGI1 antibody. Lane 1: HeLa cell lysate. Load: 35 µg per lane. Primary Antibody: Anti-LGI1 at 2 µg/mL. Secondary antibody: Peroxidase rabbit secondary antibody at 1:10,000 for 45 min at RT. Block: 5% BLOTTO overnight at 4°C. Predicted/Observed size: 63.8 kDa, ~60 kDa for LGI1.

**Disclaimer**

This product is for research use only and is not intended for therapeutic or diagnostic applications. Please contact a technical service representative for more information. All products of animal origin manufactured by Rockland Immunochemicals are derived from starting materials of North American origin. Collection was performed in United States Department of Agriculture (USDA) inspected facilities and all materials have been inspected and certified to be free of disease and suitable for exportation. All properties listed are typical characteristics and are not specifications. All suggestions and data are offered in good faith but without guarantee as conditions and methods of use of our products are beyond our control. All claims must be made within 30 days following the date of delivery. The prospective user must determine the suitability of our materials before adopting them on a commercial scale. Suggested uses of our products are not recommendations to use our products in violation of any patent or as a license under any patent of Rockland Immunochemicals, Inc. If you require a commercial license to use this material and do not have one, then return this material, unopened to: Rockland Inc., P.O. BOX 5199, Limerick, Pennsylvania, USA.