

Datasheet for 600-401-CJ1**LEMD1 Antibody****Overview**

Description:	Anti-LEMD1 (RABBIT) Antibody - 600-401-CJ1
Item No.:	600-401-CJ1
Size:	100 µg
Applications:	ELISA, WB
Reactivity:	Human, Mouse
Host Species:	Rabbit

Product Details

Background:	LEMD1 (LEM domain-containing1) is a member of cancer-testis gene family. LEMD1 is normally expressed only in testis. Six alternatively spliced forms of LEMD1 transcripts in normal testis have been identified, but only one of the six was expressed in colorectal cancers. LEMD1 may represent a promising target antigen for immunotherapy of colorectal cancers. In addition, LEMD1 and SPATA19 are putative cancer biomarkers and promising targets for active immunotherapy.
Synonyms:	LEMD1 Antibody, CT50, LEMP-1, LEM domain-containing protein 1, LEM domain protein 1, CT50
Host Species:	Rabbit
Clonality:	Polyclonal
Format:	IgG

Target Details

Gene Name:	LEMD1
Reactivity:	Human, Mouse
Immunogen Type:	Conjugated Peptide
Immunogen:	Anti-LEMD1 antibody was prepared from whole rabbit serum produced by repeated immunizations with a 19 amino acid synthetic peptide near the internal region of human LEMD1.

Purity/Specificity: Anti-LEMD1 Antibody was affinity purified from monospecific antiserum by immunoaffinity chromatography. At least six isoforms of LEMD1 are known to exist; this antibody will detect the longest isoform. LEMD1 antibody is predicted to not cross-react with LEMD2 and LEMD3.

Relevant Links:

- [UniProtKB - Q68G75](#)
- [GeneID - 93273](#)
- [NCBI - Q68G75](#)

Application Details

Tested Applications: ELISA, WB

Application Note: Anti-LEMD1 Antibody has been tested for use in ELISA and Western Blotting. Specific conditions for reactivity should be optimized by the end user. Expect a band at approximately 20 kDa in Western Blots of specific cell lysates and tissues.

Assay Dilutions: All assays should be optimized by the user. Recommended dilutions (if any) may be listed below.

ELISA: 1:10,000

WB: 1 µg/mL

Formulation

Physical State: Liquid (sterile filtered)

Concentration: 1 mg/mL by UV absorbance at 280 nm

Buffer: 0.01 M Sodium Phosphate, 0.25 M Sodium Chloride, pH 7.2

Preservative: 0.02% (w/v) Sodium Azide

Stabilizer: None

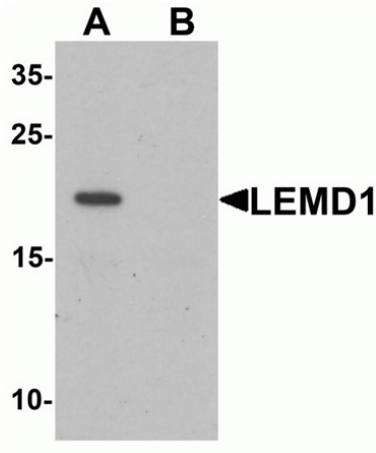
Shipping & Handling

Shipping Condition: Dry Ice

Storage Condition: Store vial at -20° C prior to opening. Aliquot contents and freeze at -20° C or below for extended storage. Avoid cycles of freezing and thawing. Centrifuge product if not completely clear after standing at room temperature. This product is stable for several weeks at 4° C as an undiluted liquid. Dilute only prior to immediate use.

Expiration: Expiration date is one (1) year from date of receipt.

Images



Western Blot

Western blot analysis of LEMD1.

Load: A20 cell lysate.

Primary Antibody: LEMD1 antibody at 1 $\mu\text{g}/\text{mL}$ in (A) the absence and (B) the presence of blocking peptide.

Disclaimer

This product is for research use only and is not intended for therapeutic or diagnostic applications. Please contact a technical service representative for more information. All products of animal origin manufactured by Rockland Immunochemicals are derived from starting materials of North American origin. Collection was performed in United States Department of Agriculture (USDA) inspected facilities and all materials have been inspected and certified to be free of disease and suitable for exportation. All properties listed are typical characteristics and are not specifications. All suggestions and data are offered in good faith but without guarantee as conditions and methods of use of our products are beyond our control. All claims must be made within 30 days following the date of delivery. The prospective user must determine the suitability of our materials before adopting them on a commercial scale. Suggested uses of our products are not recommendations to use our products in violation of any patent or as a license under any patent of Rockland Immunochemicals, Inc. If you require a commercial license to use this material and do not have one, then return this material, unopened to: Rockland Inc., P.O. BOX 5199, Limerick, Pennsylvania, USA.