

Datasheet for 600-401-CG9**L1TD1 Antibody****Overview**

Description:	Anti-L1TD1 (RABBIT) Antibody - 600-401-CG9
Item No.:	600-401-CG9
Size:	100 µg
Applications:	ELISA, WB
Reactivity:	Human
Host Species:	Rabbit

Product Details

Background:	L1TD1 (ECAT11) is a member of the family of Embryonic Stem Cell Associated Transcripts (ECAT) that play an important role in stem cell biology. ECAT4 (Nanog) is a master regulator for the maintenance of mESC and hESC. ECAT5 was identified to be Embryonic stem cell expressed Ras (ERas), a Ras-like oncogene that is important in regulating mESC proliferation. ECAT9 (GDF3) is an important factor that helps maintain mESC pluripotency by inhibiting bone morphogenetic protein (BMP) signaling. L1TD1 is highly enriched in undifferentiated hESC and L1TD1 is a target gene of Nanog.
Synonyms:	L1TD1 Antibody, ECAT11, ECAT11, LINE-1 type transposase domain-containing protein 1, ES cell-associated protein 11
Host Species:	Rabbit
Clonality:	Polyclonal
Format:	IgG

Target Details

Gene Name:	L1TD1
Reactivity:	Human
Immunogen Type:	Conjugated Peptide
Immunogen:	Anti-L1TD1 antibody was prepared from whole rabbit serum produced by repeated immunizations with a 17 amino acid synthetic peptide near the C-terminus of human L1TD1.

Purity/Specificity:	Anti-L1TD1 Antibody was affinity purified from monospecific antiserum by immunoaffinity chromatography. L1TD1 antibody is predicted to not cross-react with other ECAT protein family members
Relevant Links:	<ul style="list-style-type: none">• UniProtKB - Q5T7N2• GeneID - 54596• NCBI - NP_061952

Application Details

Tested Applications:	ELISA, WB
Application Note:	Anti-L1TD1 Antibody has been tested for use in ELISA and Western Blotting. Specific conditions for reactivity should be optimized by the end user. Expect a band at approximately 99 kDa in Western Blots of specific cell lysates and tissues.
Assay Dilutions:	All assays should be optimized by the user. Recommended dilutions (if any) may be listed below.
ELISA:	1:10,000
WB:	1 µg/mL

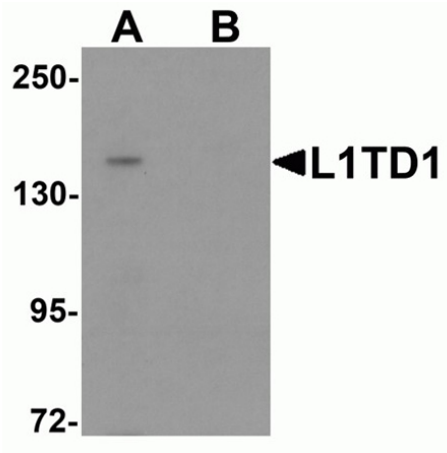
Formulation

Physical State:	Liquid (sterile filtered)
Concentration:	1 mg/mL by UV absorbance at 280 nm
Buffer:	0.01 M Sodium Phosphate, 0.25 M Sodium Chloride, pH 7.2
Preservative:	0.02% (w/v) Sodium Azide
Stabilizer:	None

Shipping & Handling

Shipping Condition:	Dry Ice
Storage Condition:	Store vial at -20° C prior to opening. Aliquot contents and freeze at -20° C or below for extended storage. Avoid cycles of freezing and thawing. Centrifuge product if not completely clear after standing at room temperature. This product is stable for several weeks at 4° C as an undiluted liquid. Dilute only prior to immediate use.
Expiration:	Expiration date is one (1) year from date of receipt.

Images



Western Blot

Western blot analysis of L1TD1.

Load: Jurkat cell lysate.

Primary Antibody: L1TD1 antibody at 1 $\mu\text{g}/\text{mL}$ in (A) the absence and (B) the presence of blocking peptide.

Disclaimer

This product is for research use only and is not intended for therapeutic or diagnostic applications. Please contact a technical service representative for more information. All products of animal origin manufactured by Rockland Immunochemicals are derived from starting materials of North American origin. Collection was performed in United States Department of Agriculture (USDA) inspected facilities and all materials have been inspected and certified to be free of disease and suitable for exportation. All properties listed are typical characteristics and are not specifications. All suggestions and data are offered in good faith but without guarantee as conditions and methods of use of our products are beyond our control. All claims must be made within 30 days following the date of delivery. The prospective user must determine the suitability of our materials before adopting them on a commercial scale. Suggested uses of our products are not recommendations to use our products in violation of any patent or as a license under any patent of Rockland Immunochemicals, Inc. If you require a commercial license to use this material and do not have one, then return this material, unopened to: Rockland Inc., P.O. BOX 5199, Limerick, Pennsylvania, USA.