

Datasheet for 600-401-CG8**KREMEN2 Antibody****Overview**

Description:	Anti-KREMEN2 (RABBIT) Antibody - 600-401-CG8
Item No.:	600-401-CG8
Size:	100 µg
Applications:	ELISA, IHC, WB
Reactivity:	Human, Mouse
Host Species:	Rabbit

Product Details

Background:	Kremen (Kringle containing protein marking the eye and the nose) proteins are type I transmembrane proteins that contain extracellular kringle, WSC and CUB domains and an intracellular region without any conserved motifs. Kremens bind a subset of the secreted Dickkopf proteins (Dkk 1, 2, and 4) with high affinity to modulate the canonical Wnt signaling pathway that is transduced by the ternary receptor complex composed of Wnt, Frizzled, and the LDL receptor related protein 5/6 (LRP5/6) co-receptor. Recent experiments have shown that KREMEN2 is a regulator of bone remodeling and raise the possibility that antagonizing KREMEN2 might prove beneficial in patients with bone loss disorders.
Synonyms:	KREMEN2 Antibody, KRM2, KRM2, Kremen protein 2, Dickkopf receptor 2
Host Species:	Rabbit
Clonality:	Polyclonal
Format:	IgG

Target Details

Gene Name:	KREMEN2
Reactivity:	Human, Mouse
Immunogen Type:	Conjugated Peptide
Immunogen:	Anti-KREMEN2 antibody was prepared from whole rabbit serum produced by repeated immunizations with a 15 amino acid peptide near the C-terminus of human KREMEN2.

Purity/Specificity: Anti-KREMEN2 Antibody was affinity purified from monospecific antiserum by immunoaffinity chromatography. Multiple isoforms of KREMEN2 are known to exist. KREMEN2 antibody is predicted to not cross-react with other Kremen protein family members.

Relevant Links:

- [UniProtKB - Q8NCW0](#)
- [GeneID - 79412](#)
- [NCBI - NP_757384](#)

Application Details

Tested Applications: ELISA, IHC, WB

Application Note: Anti-KREMEN2 Antibody has been tested for use in ELISA, Western Blotting, Immunocytochemistry. Specific conditions for reactivity should be optimized by the end user. Expect a band at approximately 49 kDa in Western Blots of specific cell lysates and tissues.

Assay Dilutions: All assays should be optimized by the user. Recommended dilutions (if any) may be listed below.

ELISA: 1:10,000

WB: 1 µg/mL

Formulation

Physical State: Liquid (sterile filtered)

Concentration: 1 mg/mL by UV absorbance at 280 nm

Buffer: 0.01 M Sodium Phosphate, 0.25 M Sodium Chloride, pH 7.2

Preservative: 0.02% (w/v) Sodium Azide

Stabilizer: None

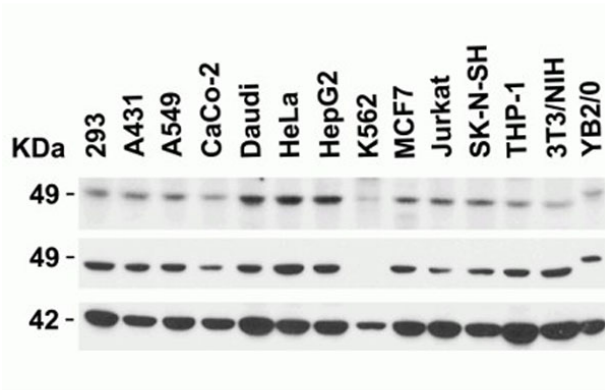
Shipping & Handling

Shipping Condition: Dry Ice

Storage Condition: Store vial at -20° C prior to opening. Aliquot contents and freeze at -20° C or below for extended storage. Avoid cycles of freezing and thawing. Centrifuge product if not completely clear after standing at room temperature. This product is stable for several weeks at 4° C as an undiluted liquid. Dilute only prior to immediate use.

Expiration: Expiration date is one (1) year from date of receipt.

Images



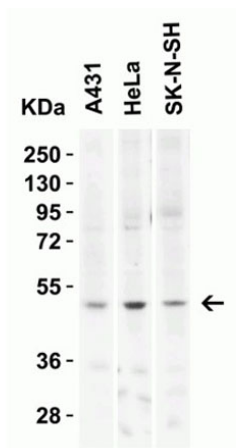
Western Blot

Western Blot of KREMEN2.

Load: 15 µg of Human, Mouse and Rat Cell lysates per lane.

Primary Antibody: Top: KREMEN2 (p/n 600-401-CG8) at 2 µg/mL, Middle: KRM2 at 1 µg/mL, and Bottom: beta-actin at 2 µg/mL for 1h incubation at RT in 5% NFDm/TBST.

Secondary: Goat anti-rabbit IgG HRP conjugate at 1:10000 dilution.



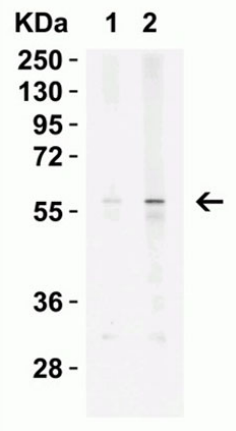
Western Blot

Western Blot of KREMEN2.

Load: 15 µg of human cell lysates per lane.

Primary Antibody: KREMEN2 at 2 µg/mL for 1h incubation at RT in 5% NFDm/TBST.

Secondary: Goat anti-rabbit IgG HRP conjugate at 1:10000 dilution



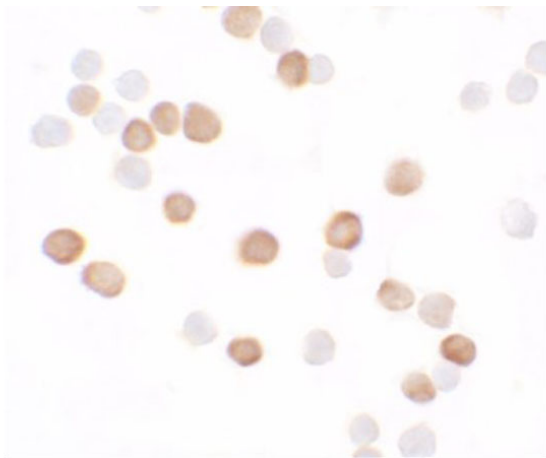
Western Blot

Western Blot of KREMEN2.

Load: 15 µg of mouse spleen tissue lysates per lane.

Primary Antibody: KREMEN2 (Lane 1: at 1 µg/mL and Lane 2: at 2 µg/mL) for 1h incubation at RT in 5% NFDm/TBST.

Secondary: Goat anti-rabbit IgG HRP conjugate at 1:10000 dilution.

**Immunocytochemistry**

Immunocytochemistry of KREMEN2.

Cell: HeLa cells.

Fixation: formaldehyde.

Blocking: 10% serum for 1 h at RT.

Antigen retrieval: heat mediation with a citrate buffer (pH6).

Primary Antibody: anti-KREMEN2 antibody at 5 µg/ml overnight at 4°C.

Secondary Antibody: goat anti-rabbit IgG H&L (HRP) at 1:250.

Counter stained with Hematoxylin.

Disclaimer

This product is for research use only and is not intended for therapeutic or diagnostic applications. Please contact a technical service representative for more information. All products of animal origin manufactured by Rockland Immunochemicals are derived from starting materials of North American origin. Collection was performed in United States Department of Agriculture (USDA) inspected facilities and all materials have been inspected and certified to be free of disease and suitable for exportation. All properties listed are typical characteristics and are not specifications. All suggestions and data are offered in good faith but without guarantee as conditions and methods of use of our products are beyond our control. All claims must be made within 30 days following the date of delivery. The prospective user must determine the suitability of our materials before adopting them on a commercial scale. Suggested uses of our products are not recommendations to use our products in violation of any patent or as a license under any patent of Rockland Immunochemicals, Inc. If you require a commercial license to use this material and do not have one, then return this material, unopened to: Rockland Inc., P.O. BOX 5199, Limerick, Pennsylvania, USA.