

Datasheet for 600-401-CF8**KLRA3 Antibody****Overview**

Description:	Anti-KLRA3 (RABBIT) Antibody - 600-401-CF8
Item No.:	600-401-CF8
Size:	100 µg
Applications:	ELISA, WB
Reactivity:	Mouse, Rat
Host Species:	Rabbit

Product Details

Background:	KLRA3 (also known as Ly49C) is a member of the LY49 family of receptors in Natural Killer (NK) cells that bind to major histocompatibility complex (MHC) class 1. These proteins are classified as either activating or inhibitory receptors based on whether they possess an immunoreceptor tyrosine-based inhibitory motif (ITIM) in their cytoplasmic region (for inhibitory receptors), or an immunoreceptor tyrosine-based activation motif (ITAM) that transmits activating signals resulting in phosphorylation of several substrates. KLRA3 is thought to be an inhibitory receptor, recognizing peptide -receptive H-2Kb.
Synonyms:	KLRA3 Antibody, 5E6, Nk2, Nk-2, Ly49c, Nk2.1, NK-2.1, Ly-49c, Ly49C, Killer cell lectin-like receptor 3, 5E6
Host Species:	Rabbit
Clonality:	Polyclonal
Format:	IgG

Target Details

Gene Name:	Klra3
Reactivity:	Mouse, Rat
Immunogen Type:	Conjugated Peptide
Immunogen:	Anti-KLRA3 antibody was prepared from whole rabbit serum produced by repeated immunizations with a 14 amino acid synthetic peptide near the C-terminus of mouse KLRA3.

Purity/Specificity: Anti-KLRA3 Antibody was affinity purified from monospecific antiserum by immunoaffinity chromatography. This antibody may cross-react with other LY49 receptors.

Relevant Links:

- [UniProtKB - Q64329](#)
- [GeneID - 16634](#)
- [NCBI - AAI32525](#)

Application Details

Tested Applications: ELISA, WB

Application Note: Anti-KLRA3 Antibody has been tested for use in ELISA and Western Blotting. Specific conditions for reactivity should be optimized by the end user. Expect a band at approximately 31 kDa in Western Blots of specific cell lysates and tissues.

Assay Dilutions: All assays should be optimized by the user. Recommended dilutions (if any) may be listed below.

ELISA: 1:20,000

WB: 2 µg/mL

Formulation

Physical State: Liquid (sterile filtered)

Concentration: 1 mg/mL by UV absorbance at 280 nm

Buffer: 0.01 M Sodium Phosphate, 0.25 M Sodium Chloride, pH 7.2

Preservative: 0.02% (w/v) Sodium Azide

Stabilizer: None

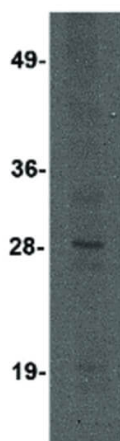
Shipping & Handling

Shipping Condition: Dry Ice

Storage Condition: Store vial at -20° C prior to opening. Aliquot contents and freeze at -20° C or below for extended storage. Avoid cycles of freezing and thawing. Centrifuge product if not completely clear after standing at room temperature. This product is stable for several weeks at 4° C as an undiluted liquid. Dilute only prior to immediate use.

Expiration: Expiration date is one (1) year from date of receipt.

Images



Western Blot

Western Blot of KLRA3 antibody. Lane A: Mouse brain tissue lysate at 2 $\mu\text{g}/\text{mL}$. Load: 35 μg per lane. Secondary antibody: Peroxidase rabbit secondary antibody at 1:10,000 for 45 min at RT. Block: 5% BLOTTO overnight at 4°C. Predicted/Observed size: 31.3 kDa, ~28 kDa for KLRA3.

Disclaimer

This product is for research use only and is not intended for therapeutic or diagnostic applications. Please contact a technical service representative for more information. All products of animal origin manufactured by Rockland Immunochemicals are derived from starting materials of North American origin. Collection was performed in United States Department of Agriculture (USDA) inspected facilities and all materials have been inspected and certified to be free of disease and suitable for exportation. All properties listed are typical characteristics and are not specifications. All suggestions and data are offered in good faith but without guarantee as conditions and methods of use of our products are beyond our control. All claims must be made within 30 days following the date of delivery. The prospective user must determine the suitability of our materials before adopting them on a commercial scale. Suggested uses of our products are not recommendations to use our products in violation of any patent or as a license under any patent of Rockland Immunochemicals, Inc. If you require a commercial license to use this material and do not have one, then return this material, unopened to: Rockland Inc., P.O. BOX 5199, Limerick, Pennsylvania, USA.