

Datasheet for 600-401-CF1**KLHL1 Antibody****Overview**

Description:	Anti-KLHL1 (RABBIT) Antibody - 600-401-CF1
Item No.:	600-401-CF1
Size:	100 µg
Applications:	ELISA, IHC, WB
Reactivity:	Human, Rat
Host Species:	Rabbit

Product Details

Background:	The mammalian Kelch-like 1 (KLHL1) was initially discovered as a homolog to the Drosophila Kelch gene that is highly expressed in several brain tissues. The predicted protein domain structure of KLHL1 is characteristic of a number of proteins that bind actin, form dimers, and often act as actin-organizing proteins. Based on the presence of anti-sense RNA that spans the transcription and translation start sites as well as the first splice site of KLHL1 in brain tissue of individuals suffering from the neurodegenerative disorder spinocerebellar ataxia type 8 (SCA8), it has been suggested that KLHL1 is involved this disease and that regulation of KLHL1 protein may be affected by antisense RNA expression.
Synonyms:	KLHL1 Antibody, MRP2, KIAA1490, Kelch-like protein 1
Host Species:	Rabbit
Clonality:	Polyclonal
Format:	IgG

Target Details

Gene Name:	KLHL1
Reactivity:	Human, Rat
Immunogen Type:	Conjugated Peptide
Immunogen:	Anti-KLHL1 antibody was prepared from whole rabbit serum produced by repeated immunizations with a 14 amino acid synthetic peptide from near the amino-terminus of human KLHL1.

Purity/Specificity: Anti-KLHL1 Antibody is immunoaffinity purified. Cross reactivity with KLHL1 from other sources has not been determined.

Relevant Links:

- [UniProtKB - Q9NR64](#)
- [GeneID - 57626](#)
- [NCBI - AAF81719](#)

Application Details

Tested Applications: ELISA, IHC, WB

Application Note: Anti-KLHL1 Antibody has been tested for use in ELISA, Western Blotting, and Immunohistochemistry. Specific conditions for reactivity should be optimized by the end user. Expect a band at approximately 83 kDa in Western Blots of specific cell lysates and tissues.

Assay Dilutions: All assays should be optimized by the user. Recommended dilutions (if any) may be listed below.

ELISA: 1:20,000 - 1:40,000

IHC: 10 µg/mL

WB: 2-4 µg/mL

Formulation

Physical State: Liquid (sterile filtered)

Concentration: 1 mg/mL by UV absorbance at 280 nm

Buffer: 0.01 M Sodium Phosphate, 0.25 M Sodium Chloride, pH 7.2

Preservative: 0.02% (w/v) Sodium Azide

Stabilizer: None

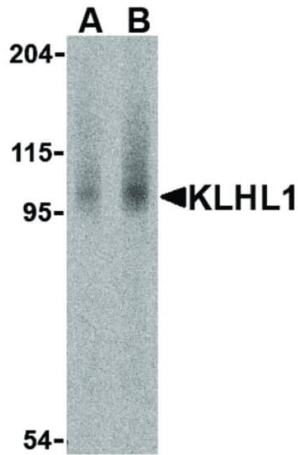
Shipping & Handling

Shipping Condition: Dry Ice

Storage Condition: Store vial at -20° C prior to opening. Aliquot contents and freeze at -20° C or below for extended storage. Avoid cycles of freezing and thawing. Centrifuge product if not completely clear after standing at room temperature. This product is stable for several weeks at 4° C as an undiluted liquid. Dilute only prior to immediate use.

Expiration: Expiration date is one (1) year from date of receipt.

Images



Western Blot

Western Blot of KLHL1 antibody. Lane A: human brain cell lysate at 2 $\mu\text{g}/\text{ml}$. Lane B: human brain cell lysate at 4 $\mu\text{g}/\text{ml}$. Load: 35 μg per lane. Primary antibody: KLHL1 antibody at designated concentrations for overnight at 4°C. Secondary antibody: Peroxidase rabbit secondary antibody at 1:10,000 for 45 min at RT. Block: 5% BLOTTO overnight at 4°C. Predicted/Observed size: 83 kDa, 100 kDa for KLHL1 antibody. Other band(s): KLHL1 splice variants and isoforms.

Disclaimer

This product is for research use only and is not intended for therapeutic or diagnostic applications. Please contact a technical service representative for more information. All products of animal origin manufactured by Rockland Immunochemicals are derived from starting materials of North American origin. Collection was performed in United States Department of Agriculture (USDA) inspected facilities and all materials have been inspected and certified to be free of disease and suitable for exportation. All properties listed are typical characteristics and are not specifications. All suggestions and data are offered in good faith but without guarantee as conditions and methods of use of our products are beyond our control. All claims must be made within 30 days following the date of delivery. The prospective user must determine the suitability of our materials before adopting them on a commercial scale. Suggested uses of our products are not recommendations to use our products in violation of any patent or as a license under any patent of Rockland Immunochemicals, Inc. If you require a commercial license to use this material and do not have one, then return this material, unopened to: Rockland Inc., P.O. BOX 5199, Limerick, Pennsylvania, USA.