

**Datasheet for 600-401-CE8****KLF17 Antibody****Overview**

<b>Description:</b>	Anti-KLF17 (RABBIT) Antibody - 600-401-CE8
<b>Item No.:</b>	600-401-CE8
<b>Size:</b>	100 µg
<b>Applications:</b>	ELISA, IHC, WB
<b>Reactivity:</b>	Human, Mouse, Rat
<b>Host Species:</b>	Rabbit

**Product Details**

<b>Background:</b>	KLF17, also known as ZNF393, is a member of the Sp/KLF family of transcription factors (1,2). KLF17 binds to the promoter and negatively regulates the transcription of Id-1, a key metastasis regulator in breast cancer (3). Suppression of KLF17 promotes breast cancer cell invasion and epithelial-mesenchymal transition (3). Down-regulated KLF17 expression is also associated tumor invasion and poor prognosis in hepatocellular carcinoma, suggesting that the level of KLF17 expression can serve as a prognostic indicator (4).
<b>Synonyms:</b>	Kruppel-like factor 17, zinc finger protein 393, ZNF393, Zfp393
<b>Host Species:</b>	Rabbit
<b>Clonality:</b>	Polyclonal
<b>Format:</b>	IgG

**Target Details**

<b>Gene Name:</b>	KLF17
<b>Reactivity:</b>	Human, Mouse, Rat
<b>Immunogen Type:</b>	Conjugated Peptide
<b>Immunogen:</b>	Anti-KLF17 antibody was prepared from whole rabbit serum produced by repeated immunizations with a 17 amino acid peptide near the C-terminus of human KLF17.

**Purity/Specificity:** Anti-KLF17 antibody was affinity purified from monospecific antiserum by immunoaffinity chromatography. KLF17 antibody is human, mouse and rat reactive. At least two isoforms of KLF17 are known to exist; this antibody will only detect the large isoform. KLF17 antibody is predicted to not cross-react with other KLF proteins.

**Relevant Links:**

- [UniProtKB - Q5JT82](#)
- [GeneID - 128209](#)
- [NCBI - NP\\_775755](#)

## Application Details

**Tested Applications:** ELISA, IHC, WB

**Application Note:** Anti-KLF17 Antibody has been tested for use in ELISA, immunohistochemistry, and Western Blotting. Specific conditions for reactivity should be optimized by the end user. Expect a band at approximately 43 kDa in Western Blots of specific cell lysates and tissues.

**Assay Dilutions:** All assays should be optimized by the user. Recommended dilutions (if any) may be listed below.

**ELISA:** 1:10,000 - 1:20,000

**IHC:** 5 µg/mL

**WB:** 1-2 µg/mL

## Formulation

**Physical State:** Liquid (sterile filtered)

**Concentration:** 1 mg/mL by UV absorbance at 280 nm

**Buffer:** 0.01 M Sodium Phosphate, 0.25 M Sodium Chloride, pH 7.2

**Preservative:** 0.02% (w/v) Sodium Azide

**Stabilizer:** None

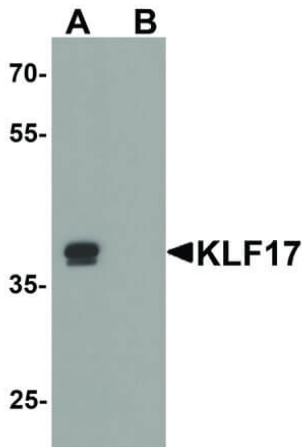
## Shipping & Handling

**Shipping Condition:** Dry Ice

**Storage Condition:** Store vial at -20° C prior to opening. Aliquot contents and freeze at -20° C or below for extended storage. Avoid cycles of freezing and thawing. Centrifuge product if not completely clear after standing at room temperature. This product is stable for several weeks at 4° C as an undiluted liquid. Dilute only prior to immediate use.

**Expiration:** Expiration date is one (1) year from date of receipt.

## Images



### Western Blot

Western Blot of Rabbit anti-KLF17 antibody. Lane A: rat liver tissue lysate in the absence of blocking peptide. Lane B: rat liver tissue lysate in the presence of blocking peptide. Primary antibody: KLF17 antibody at 1  $\mu\text{g}/\text{mL}$  overnight at 4°C. Secondary antibody: Goat anti-Rabbit HRP secondary antibody. Block: 5% BLOTTO. Predicted/Observed size: 28/39/43 kDa, 38 kDa for KLF17.

## Disclaimer

This product is for research use only and is not intended for therapeutic or diagnostic applications. Please contact a technical service representative for more information. All products of animal origin manufactured by Rockland Immunochemicals are derived from starting materials of North American origin. Collection was performed in United States Department of Agriculture (USDA) inspected facilities and all materials have been inspected and certified to be free of disease and suitable for exportation. All properties listed are typical characteristics and are not specifications. All suggestions and data are offered in good faith but without guarantee as conditions and methods of use of our products are beyond our control. All claims must be made within 30 days following the date of delivery. The prospective user must determine the suitability of our materials before adopting them on a commercial scale. Suggested uses of our products are not recommendations to use our products in violation of any patent or as a license under any patent of Rockland Immunochemicals, Inc. If you require a commercial license to use this material and do not have one, then return this material, unopened to: Rockland Inc., P.O. BOX 5199, Limerick, Pennsylvania, USA.