

**Datasheet for 600-401-CE5****KINDLIN3 Antibody****Overview**

|                      |   |
|----------------------|---|
| <b>Description:</b>  | Anti-Kindlin3 (RABBIT) Antibody - 600-401-CE5 |
| <b>Item No.:</b>     | 600-401-CE5                                   |
| <b>Size:</b>         | 100 µg  |
| <b>Applications:</b> | ELISA, WB                                     |
| <b>Reactivity:</b>   | Human, Mouse, Rat                             |
| <b>Host Species:</b> | Rabbit  |

**Product Details**

|                      |   |
|----------------------|---|
| <b>Background:</b>   | The three KINDLINS are a novel family of focal adhesion proteins, localizing to integrin adhesion sites. The KINDLIN proteins are composed of a centrally located FERM domain interrupted by a pleckstrin homology (PH) domain. KINDLIN1 and KINDLIN2 have been shown to play an essential role in integrin-mediated adhesion and spreading. In contrast to the widely expressed KINDLIN1 and KINDLIN2, KINDLIN3 is restricted to hematopoietic cells and is particularly abundant in megakaryocytes and platelets. Several reports describe a transcriptional misregulation of KINDLINS in various types of cancer. A recent study demonstrates that KINDLIN3 is essential for platelet integrin activation and subsequent integrin outside-in signaling, suggesting it may serve as a potential target for the design of therapeutics aimed at specifically disrupting integrin activation in platelets and leukocytes. |
| <b>Synonyms:</b>     | KINDLIN3 Antibody, URP2, KIND3, MIG-2, MIG2B, URP2SF, UNC112C, URP2, Fermitin family homolog 3, Kindlin-3   |
| <b>Host Species:</b> | Rabbit  |
| <b>Clonality:</b>    | Polyclonal  |
| <b>Format:</b>       | IgG   |

**Target Details**

|                        |                    |
|------------------------|--------------------|
| <b>Gene Name:</b>      | FERMT3             |
| <b>Reactivity:</b>     | Human, Mouse, Rat  |
| <b>Immunogen Type:</b> | Conjugated Peptide |

|                            |   |
|----------------------------|---|
| <b>Immunogen:</b>          | Anti-KINDLIN3 antibody was prepared from whole rabbit serum produced by repeated immunizations with a 19 amino acid synthetic peptide near the C-terminus of the human KINDLIN3.      |
| <b>Purity/Specificity:</b> | Anti-KINDLIN3 Antibody was affinity purified from monospecific antiserum by immunoaffinity chromatography. Cross reactivity with KINDLIN3 from other sources has not been determined. |
| <b>Relevant Links:</b>     | <ul style="list-style-type: none"><li>• <a href="#">UniProtKB - Q86UX7</a></li><li>• <a href="#">GeneID - 83706</a></li><li>• <a href="#">NCBI - NP_848537</a></li></ul>              |

## Application Details

|                             |  |
|-----------------------------|--|
| <b>Tested Applications:</b> | ELISA, WB  |
| <b>Application Note:</b>    | Anti-KINDLIN3 Antibody has been tested for use in ELISA and Western Blotting. Specific conditions for reactivity should be optimized by the end user. Expect a band at approximately 76 kDa in Western Blots of specific cell lysates and tissues. |
| <b>Assay Dilutions:</b>     | All assays should be optimized by the user. Recommended dilutions (if any) may be listed below.  |
| <b>ELISA:</b>               | 1:10,000 - 1:20,000  |
| <b>WB:</b>                  | 1-2 µg/mL  |

## Formulation

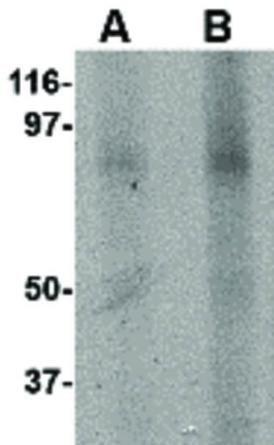
|                        |   |
|------------------------|---|
| <b>Physical State:</b> | Liquid (sterile filtered)                               |
| <b>Concentration:</b>  | 1 mg/mL by UV absorbance at 280 nm                      |
| <b>Buffer:</b>         | 0.01 M Sodium Phosphate, 0.25 M Sodium Chloride, pH 7.2 |
| <b>Preservative:</b>   | 0.02% (w/v) Sodium Azide                                |
| <b>Stabilizer:</b>     | None  |

## Shipping & Handling

|                            |   |
|----------------------------|---|
| <b>Shipping Condition:</b> | Dry Ice   |
| <b>Storage Condition:</b>  | Store vial at -20° C prior to opening. Aliquot contents and freeze at -20° C or below for extended storage. Avoid cycles of freezing and thawing. Centrifuge product if not completely clear after standing at room temperature. This product is stable for several weeks at 4° C as an undiluted liquid. Dilute only prior to immediate use. |

**Expiration:** Expiration date is one (1) year from date of receipt.

## Images



### Western Blot

Western Blot of KINDLIN3 antibody. Lane A: Rat spleen lysate at 1  $\mu\text{g}/\text{mL}$ . Lane B: Rat spleen lysate at 2  $\mu\text{g}/\text{mL}$ . Load: 35  $\mu\text{g}$  per lane. Secondary antibody: Peroxidase rabbit secondary antibody at 1:10,000 for 45 min at RT. Block: 5% BLOTTO overnight at 4°C. Predicted/Observed size: 75.9 kDa, ~95 kDa for KINDLIN3.

## Disclaimer

This product is for research use only and is not intended for therapeutic or diagnostic applications. Please contact a technical service representative for more information. All products of animal origin manufactured by Rockland Immunochemicals are derived from starting materials of North American origin. Collection was performed in United States Department of Agriculture (USDA) inspected facilities and all materials have been inspected and certified to be free of disease and suitable for exportation. All properties listed are typical characteristics and are not specifications. All suggestions and data are offered in good faith but without guarantee as conditions and methods of use of our products are beyond our control. All claims must be made within 30 days following the date of delivery. The prospective user must determine the suitability of our materials before adopting them on a commercial scale. Suggested uses of our products are not recommendations to use our products in violation of any patent or as a license under any patent of Rockland Immunochemicals, Inc. If you require a commercial license to use this material and do not have one, then return this material, unopened to: Rockland Inc., P.O. BOX 5199, Limerick, Pennsylvania, USA.