

Datasheet for 600-401-CD7

KCNK12 Antibody

Overview

Description:	Anti-KCNK12 (RABBIT) Antibody - 600-401-CD7
Item No.:	600-401-CD7
Size:	100 µg
Applications:	ELISA, IF, IHC, WB
Reactivity:	Human, Mouse, Rat
Host Species:	Rabbit

Product Details

Background:	KCNK13 and KCNK12 (also known as THIK1 and 2) are the first two members of a novel two pore-forming P domains K ⁺ channels subfamily. The pore loop domain, a highly conserved region common to all potassium channels, is involved in determining potassium ion selectivity. Members of this family are all characterized by four transmembrane domains and may function to help influence the resting membrane potential of cells. KCNK12 is expressed mainly in the brain and lung, but also observed in the kidneys, heart and skeletal muscle. KCNK12 is closely related to KCNK13 (58% identity at the amino acid level), but could not yet been functionally expressed in vitro and may require other proteins to become active.
Synonyms:	KCNK12 Antibody, THIK2, THIK-2, K2p12.1, Potassium channel subfamily K member 12, Tandem pore domain halothane-inhibited potassium channel 2
Host Species:	Rabbit
Clonality:	Polyclonal
Format:	IgG

Target Details

Gene Name:	KCNK12
Reactivity:	Human, Mouse, Rat
Immunogen Type:	Conjugated Peptide
Immunogen:	Anti-KCNK12 antibody was prepared from whole rabbit serum produced by repeated immunizations with a 14 amino acid synthetic peptide near the C-terminus of human KCNK12.

Purity/Specificity: Anti-KCNK12 Antibody was affinity purified from monospecific antiserum by immunoaffinity chromatography. KCNK12 antibody is predicted to not cross-react with other KCNK protein family members.

Relevant Links:

- [UniProtKB - Q9HB15](#)
- [GeneID - 56660](#)
- [NCBI - NP_071338](#)

Application Details

Tested Applications: ELISA, IF, IHC, WB

Application Note: Anti-KCNK12 Antibody has been tested for use in ELISA, Western Blotting, Immunohistochemistry and Immunofluorescence. Specific conditions for reactivity should be optimized by the end user. Expect a band at approximately 47 kDa in Western Blots of specific cell lysates and tissues.

Assay Dilutions: All assays should be optimized by the user. Recommended dilutions (if any) may be listed below.

ELISA: 1:5,000

IF: 20 µg/mL

IHC: 5 µg/mL

WB: 0.5 µg/mL

Formulation

Physical State: Liquid (sterile filtered)

Concentration: 1 mg/mL by UV absorbance at 280 nm

Buffer: 0.01 M Sodium Phosphate, 0.25 M Sodium Chloride, pH 7.2

Preservative: 0.02% (w/v) Sodium Azide

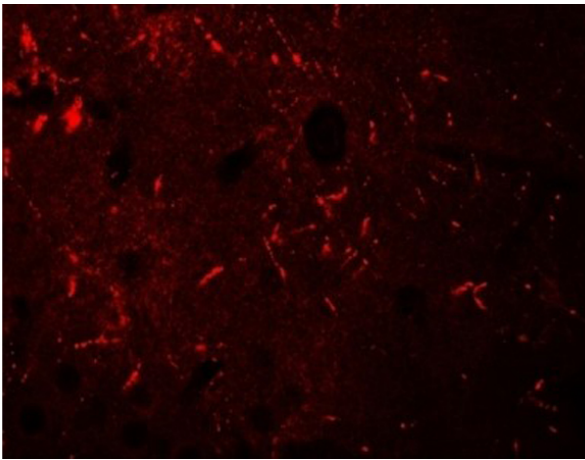
Stabilizer: None

Shipping & Handling

Shipping Condition: Dry Ice

Storage Condition:	Store vial at -20° C prior to opening. Aliquot contents and freeze at -20° C or below for extended storage. Avoid cycles of freezing and thawing. Centrifuge product if not completely clear after standing at room temperature. This product is stable for several weeks at 4° C as an undiluted liquid. Dilute only prior to immediate use.
Expiration:	Expiration date is one (1) year from date of receipt.

Images

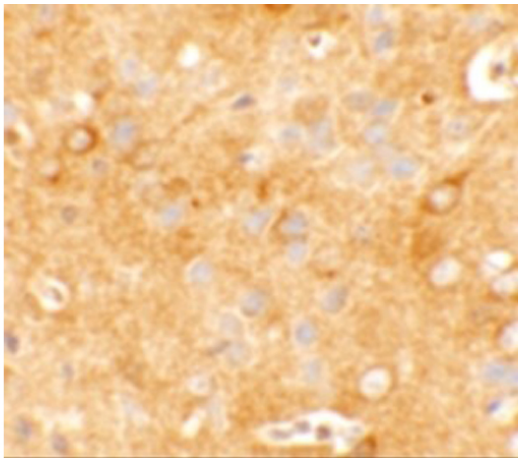


Immunofluorescence Microscopy

Immunofluorescence of KCNK12.

Tissue: mouse brain tissue.

Primary Antibody: KCNK12 antibody at 20 µg/mL.

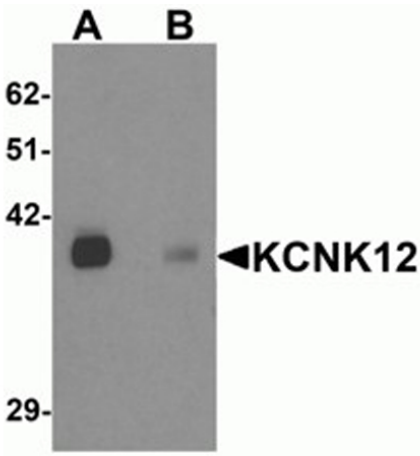


Immunohistochemistry

Immunohistochemistry of KCNK12.

Tissue: mouse brain tissue.

Primary Antibody: KCNK12 antibody at 5 µg/mL.

**Western Blot**

Western blot analysis of KCNK12.

Load: rat brain tissue lysate.

Primary Antibody: KCNK12 antibody at 0.5 $\mu\text{g}/\text{mL}$ in (A) the absence and (B) the presence of blocking peptide.

Disclaimer

This product is for research use only and is not intended for therapeutic or diagnostic applications. Please contact a technical service representative for more information. All products of animal origin manufactured by Rockland Immunochemicals are derived from starting materials of North American origin. Collection was performed in United States Department of Agriculture (USDA) inspected facilities and all materials have been inspected and certified to be free of disease and suitable for exportation. All properties listed are typical characteristics and are not specifications. All suggestions and data are offered in good faith but without guarantee as conditions and methods of use of our products are beyond our control. All claims must be made within 30 days following the date of delivery. The prospective user must determine the suitability of our materials before adopting them on a commercial scale. Suggested uses of our products are not recommendations to use our products in violation of any patent or as a license under any patent of Rockland Immunochemicals, Inc. If you require a commercial license to use this material and do not have one, then return this material, unopened to: Rockland Inc., P.O. BOX 5199, Limerick, Pennsylvania, USA.