

Datasheet for 600-401-CD5**KAT5 Antibody****Overview**

Description:	Anti-KAT5 (RABBIT) Antibody - 600-401-CD5
Item No.:	600-401-CD5
Size:	100 µg
Applications:	ELISA, IF, IHC, WB
Reactivity:	Human, Mouse, Rat
Host Species:	Rabbit

Product Details

Background:	KAT5 belongs to the MYST family of histone acetyl transferases (HATs) and was originally isolated as an HIV-1 TAT-interactive protein. HATs play important roles in regulating chromatin remodeling, transcription and other nuclear processes by acetylating histone and non-histone proteins. KAT5 has been shown to play a role in DNA repair and apoptosis and is thought to play an important role in signal transduction and autophagy.
Synonyms:	KAT5 Antibody, TIP, ESA1, PLIP, TIP60, cPLA2, HTATIP, ZC2HC5, HTATIP1, Histone acetyltransferase KAT5, 60 kDa Tat-interactive protein, Tip60
Host Species:	Rabbit
Clonality:	Polyclonal
Format:	IgG

Target Details

Gene Name:	KAT5
Reactivity:	Human, Mouse, Rat
Immunogen Type:	Conjugated Peptide
Immunogen:	Anti-KAT5 antibody was prepared from whole rabbit serum produced by repeated immunizations with a 15 amino acid peptide near the C-terminus of human KAT5.
Purity/Specificity:	Anti-KAT5 Antibody was affinity purified from monospecific antiserum by immunoaffinity chromatography. Multiple isoforms of KAT5 are known to exist.

Relevant Links:	<ul style="list-style-type: none">• UniProtKB - Q92993• GeneID - 10524• NCBI - NP_874369
------------------------	--

Application Details

Tested Applications:	ELISA, IF, IHC, WB
Application Note:	Anti-KAT5 Antibody has been tested for use in ELISA, Western Blotting, Immunohistochemistry and Immunofluorescence. Specific conditions for reactivity should be optimized by the end user. Expect a band at approximately 59 kDa in Western Blots of specific cell lysates and tissues.
Assay Dilutions:	All assays should be optimized by the user. Recommended dilutions (if any) may be listed below.
ELISA:	1:10,000 - 1:20,000
IF:	User Optimized
IHC:	User Optimized
WB:	1-2 µg/mL

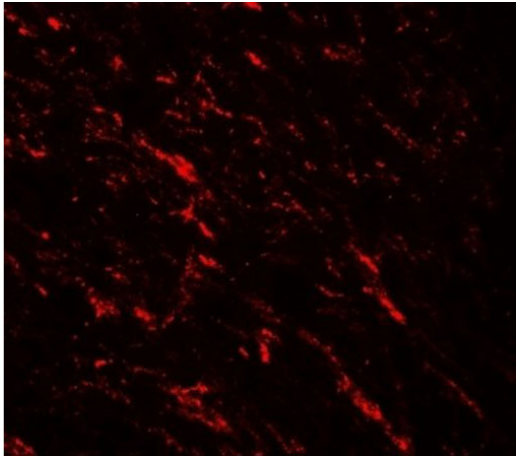
Formulation

Physical State:	Liquid (sterile filtered)
Concentration:	1 mg/mL by UV absorbance at 280 nm
Buffer:	0.01 M Sodium Phosphate, 0.25 M Sodium Chloride, pH 7.2
Preservative:	0.02% (w/v) Sodium Azide
Stabilizer:	None

Shipping & Handling

Shipping Condition:	Wet Ice
Storage Condition:	Antibody can be stored at 4°C up to one year. Antibodies should not be exposed to prolonged high temperatures.
Expiration:	Expiration date is one (1) year from date of receipt.

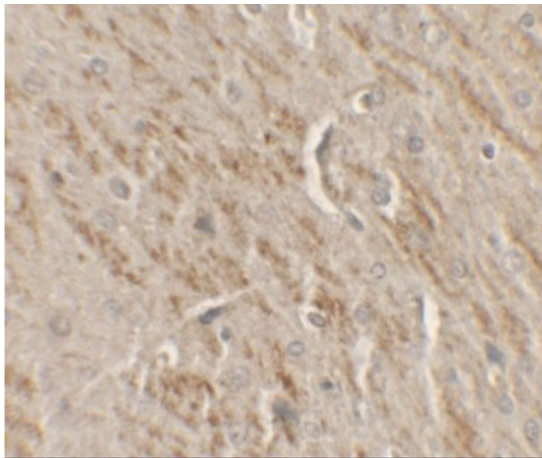
Images

**Immunofluorescence Microscopy**

Immunofluorescence of KAT5.

Tissue: rat brain tissue.

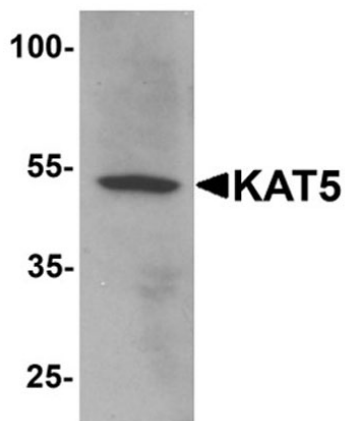
Primary Antibody: KAT5 antibody at 20 µg/mL.

**Immunohistochemistry**

Immunohistochemistry of KAT5.

Tissue: rat brain tissue.

Primary Antibody: KAT5 antibody at 2.5 µg/mL.

**Western Blot**

Western blot analysis of KAT5.

Load: human brain tissue lysate.

Primary Antibody: KAT5 antibody at 1 µg/mL.

Disclaimer

This product is for research use only and is not intended for therapeutic or diagnostic applications. Please contact a technical service representative for more information. All products of animal origin manufactured by Rockland Immunochemicals are derived from starting materials of North American origin. Collection was performed in United States Department of Agriculture (USDA) inspected facilities and all materials have been inspected and certified to be free of disease and suitable for exportation. All properties listed are typical characteristics and are not specifications. All suggestions and data are offered in good faith but without guarantee as conditions and methods of use of our products are beyond our control. All claims must be made within 30 days following the date of delivery. The prospective user must determine the suitability of our materials before adopting them on a commercial scale. Suggested uses of our products are not recommendations to use our products in violation of any patent or as a license under any patent of Rockland Immunochemicals, Inc. If you require a commercial license to use this material and do not have one, then return this material, unopened to: Rockland Inc., P.O. BOX 5199, Limerick, Pennsylvania, USA.