

**Datasheet for 600-401-CC0****JMJD5 Antibody****Overview**

<b>Description:</b>	Anti-JMJD5 (RABBIT) Antibody - 600-401-CC0
<b>Item No.:</b>	600-401-CC0
<b>Size:</b>	100 µg
<b>Applications:</b>	ELISA, IF, IHC, WB
<b>Reactivity:</b>	Human, Mouse, Rat
<b>Host Species:</b>	Rabbit

**Product Details**

<b>Background:</b>	The jumonji domain-containing protein (JMJD) family is defined by the presence of the JmjC domain that is observed in several diverse species. While several JMJD proteins have been identified as being involved in chromatin regulation, histone demethylation and development, the function of JMJD5 has not been identified. JMJD5 is expressed in multiple tissues.
<b>Synonyms:</b>	JMJD5 Antibody, JMJD5, JMJD5, Lysine-specific demethylase 8, JmjC domain-containing protein 5, Bifunctional peptidase and arginyl-hydroxylase JMJD5, Jumonji C domain-containing protein 5, L-arginine (3R)-hydroxylase KDM8
<b>Host Species:</b>	Rabbit
<b>Clonality:</b>	Polyclonal
<b>Format:</b>	IgG

**Target Details**

<b>Gene Name:</b>	KDM8
<b>Reactivity:</b>	Human, Mouse, Rat
<b>Immunogen Type:</b>	Conjugated Peptide
<b>Immunogen:</b>	Anti-JMJD5 antibody was prepared from whole rabbit serum produced by repeated immunizations with an 18 amino acid synthetic peptide from near the C-terminus of human JMJD5.

**Purity/Specificity:** Anti-JMJD5 Antibody was affinity purified from monospecific antiserum by immunoaffinity chromatography. Cross reactivity with JMJD5 from other sources has not been determined.

**Relevant Links:**

- [UniProtKB - Q8N371](#)
- [GeneID - 79831](#)
- [NCBI - NP\\_001138820](#)

## Application Details

**Tested Applications:** ELISA, IF, IHC, WB

**Application Note:** Anti-JMJD5 Antibody has been tested for use in ELISA, Western Blotting, Immunohistochemistry and Immunofluorescence. Specific conditions for reactivity should be optimized by the end user. Expect a band at approximately 47 kDa in Western Blots of specific cell lysates and tissues.

**Assay Dilutions:** All assays should be optimized by the user. Recommended dilutions (if any) may be listed below.

**ELISA:** 1:10,000 - 1:20,000

**IF:** 20 µg/mL

**IHC:** 2.5 µg/mL

**WB:** 1-2 µg/mL

## Formulation

**Physical State:** Liquid (sterile filtered)

**Concentration:** 1 mg/mL by UV absorbance at 280 nm

**Buffer:** 0.01 M Sodium Phosphate, 0.25 M Sodium Chloride, pH 7.2

**Preservative:** 0.02% (w/v) Sodium Azide

**Stabilizer:** None

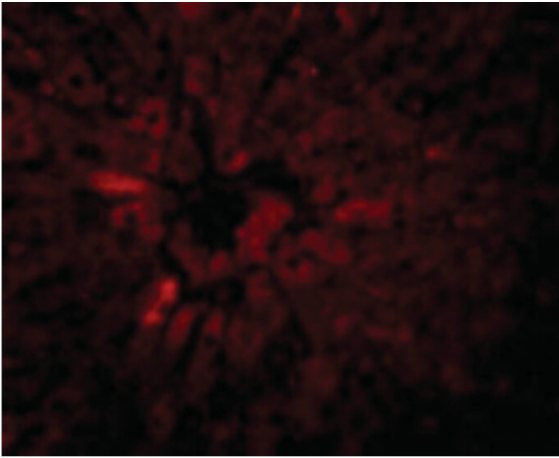
## Shipping & Handling

**Shipping Condition:** Dry Ice

**Storage Condition:** Store vial at -20° C prior to opening. Aliquot contents and freeze at -20° C or below for extended storage. Avoid cycles of freezing and thawing. Centrifuge product if not completely clear after standing at room temperature. This product is stable for several weeks at 4° C as an undiluted liquid. Dilute only prior to immediate use.

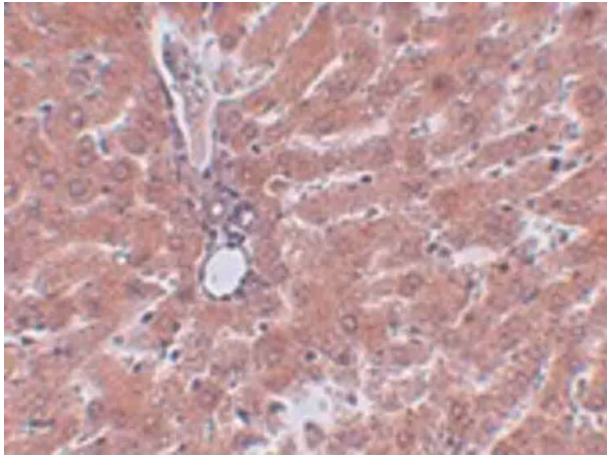
**Expiration:** Expiration date is one (1) year from date of receipt.

## Images



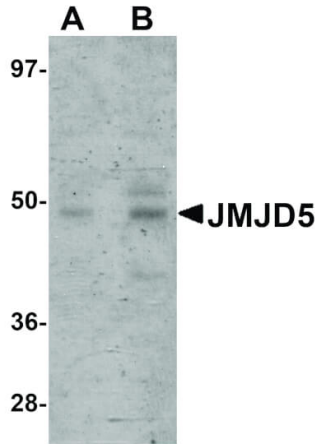
### Immunofluorescence Microscopy

Immunofluorescence Microscopy of JMJD5 antibody.  
Tissue: rat liver tissue. Fixation: 0.5% PFA. Antigen retrieval: not required. Primary antibody: JMJD5 antibody at 20  $\mu\text{g}/\text{mL}$  for 1 h at RT. Secondary antibody: Fluorescein rabbit secondary antibody at 1:10,000 for 45 min at RT. Localization: JMJD5 is nuclear. Staining: JMJD5 as red fluorescent signal.



### Immunohistochemistry

Immunohistochemistry of JMJD5 antibody. Tissue: rat liver tissue. Fixation: formalin fixed paraffin embedded. Antigen retrieval: not required. Primary antibody: JMJD5 antibody at 2.5  $\mu\text{g}/\text{mL}$  for 1 h at RT. Secondary antibody: Peroxidase rabbit secondary antibody at 1:10,000 for 45 min at RT. Localization: JMJD5 is nuclear. Staining: JMJD5 as precipitated brown signal with purple nuclear counterstain.

**Western Blot**

Western Blot of JMJD5 antibody. Lane 1: human spleen tissue lysate with JMJD5 antibody at 1 µg/mL. Lane 2: human spleen tissue lysate with JMJD5 antibody at 2 µg/mL.

Secondary antibody: Peroxidase rabbit secondary antibody at 1:10,000 for 45 min at RT. Block: 5% BLOTTO overnight at 4°C. Predicted/Observed size: 47 kDa, 47 kDa for JMJD5.

Other band(s): JMJD5 splice variants and isoforms.

**Disclaimer**

This product is for research use only and is not intended for therapeutic or diagnostic applications. Please contact a technical service representative for more information. All products of animal origin manufactured by Rockland Immunochemicals are derived from starting materials of North American origin. Collection was performed in United States Department of Agriculture (USDA) inspected facilities and all materials have been inspected and certified to be free of disease and suitable for exportation. All properties listed are typical characteristics and are not specifications. All suggestions and data are offered in good faith but without guarantee as conditions and methods of use of our products are beyond our control. All claims must be made within 30 days following the date of delivery. The prospective user must determine the suitability of our materials before adopting them on a commercial scale. Suggested uses of our products are not recommendations to use our products in violation of any patent or as a license under any patent of Rockland Immunochemicals, Inc. If you require a commercial license to use this material and do not have one, then return this material, unopened to: Rockland Inc., P.O. BOX 5199, Limerick, Pennsylvania, USA.