

Datasheet for 600-401-CB6

JMJD2A Antibody

Overview

Description:	Anti-JMJD2A (RABBIT) Antibody - 600-401-CB6
Item No.:	600-401-CB6
Size:	100 µg
Applications:	ELISA, IHC, WB
Reactivity:	Human, Mouse, Rat
Host Species:	Rabbit

Product Details

Background:	Members of the Jumonji domain 2 (JMJD2) family contain a JmjN domain, a JmjC domain, a JD2H domain, two TUDOR domains, and two PHD-type zinc fingers. The first member of this group, JMJD2A, is widely expressed in human tissues and cell lines and functions as a trimethylation-specific demethylase, converting specific trimethylated histone residues to the dimethylated form, and as a transcriptional repressor. JMJD2A can also form a complex with the androgen receptor (AR), a transcription factor that is pivotal for the development of prostate cancer. Overexpression of JMJD2A stimulates AR function and this stimulation is dependent on JMJD2A catalytic activity, suggesting that JMJD2A might be a critical protein with roles in cell proliferation and oncogenesis.
Synonyms:	JMJD2A Antibody, JMJD2, JHDM3A, JMJD2A, TDRD14A, JMJD2, KIAA0677, Lysine-specific demethylase 4A, JmjC domain-containing histone demethylation protein 3A
Host Species:	Rabbit
Clonality:	Polyclonal
Format:	IgG

Target Details

Gene Name:	KDM4A
Reactivity:	Human, Mouse, Rat
Immunogen Type:	Conjugated Peptide

Immunogen:	Anti-JMJD2A antibody was prepared from whole rabbit serum produced by repeated immunizations with a 14 amino acid synthetic peptide from near the internal region of human JMJD2A.
Purity/Specificity:	Anti-JMJD2A Antibody was affinity purified from monospecific antiserum by immunoaffinity chromatography. Cross reactivity with JMJD2A from other sources has not been determined.
Relevant Links:	<ul style="list-style-type: none">• UniProtKB - O75164• GeneID - 9682• NCBI - CAH71021

Application Details

Tested Applications:	ELISA, IHC, WB
Application Note:	Anti-JMJD2A Antibody has been tested for use in ELISA, Western Blotting, and Immunohistochemistry. Specific conditions for reactivity should be optimized by the end user. Expect a band at approximately 121 kDa in Western Blots of specific cell lysates and tissues.
Assay Dilutions:	All assays should be optimized by the user. Recommended dilutions (if any) may be listed below.
ELISA:	1:10,000 - 1:20,000
IHC:	5 µg/mL
WB:	1-2 µg/mL

Formulation

Physical State:	Liquid (sterile filtered)
Concentration:	1 mg/mL by UV absorbance at 280 nm
Buffer:	0.01 M Sodium Phosphate, 0.25 M Sodium Chloride, pH 7.2
Preservative:	0.02% (w/v) Sodium Azide
Stabilizer:	None

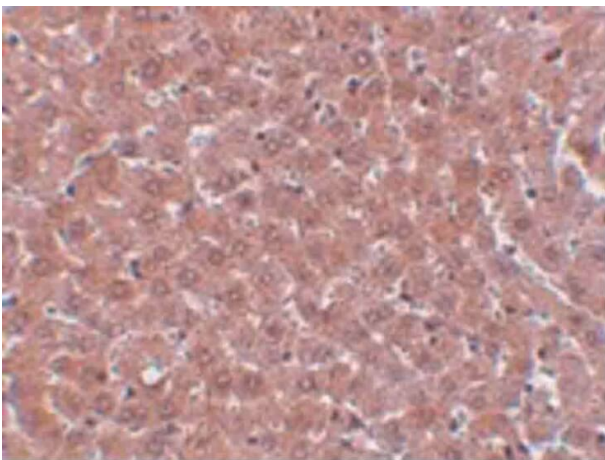
Shipping & Handling

Shipping Condition:	Dry Ice
----------------------------	---------

Storage Condition: Store vial at -20° C prior to opening. Aliquot contents and freeze at -20° C or below for extended storage. Avoid cycles of freezing and thawing. Centrifuge product if not completely clear after standing at room temperature. This product is stable for several weeks at 4° C as an undiluted liquid. Dilute only prior to immediate use.

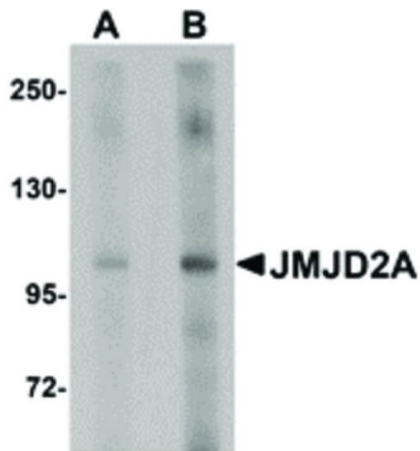
Expiration: Expiration date is one (1) year from date of receipt.

Images



Immunohistochemistry

Immunohistochemistry of JMJD2A antibody. Tissue: rat liver tissue. Fixation: formalin fixed paraffin embedded. Antigen retrieval: not required. Primary antibody: JMJD2A antibody at 5 µg/mL for 1 h at RT. Secondary antibody: Peroxidase rabbit secondary antibody at 1:10,000 for 45 min at RT. Localization: JMJD2A is nuclear. Staining: JMJD2A as precipitated brown signal with purple nuclear counterstain.



Western Blot

Western Blot of JMJD2A antibody. Lane 1: rat liver tissue lysate with JMJD2A antibody at 1 µg/mL. Lane 2: rat liver tissue lysate with JMJD2A antibody at 2 µg/mL. Secondary antibody: Peroxidase rabbit secondary antibody at 1:10,000 for 45 min at RT. Block: 5% BLOTTO overnight at 4°C. Predicted/Observed size: 121 kDa, 110 kDa for JMJD2A. Other band(s): JMJD2A splice variants and isoforms.

Disclaimer

This product is for research use only and is not intended for therapeutic or diagnostic applications. Please contact a technical service representative for more information. All products of animal origin manufactured by Rockland Immunochemicals are derived from starting materials of North American origin. Collection was performed in United States Department of Agriculture (USDA) inspected facilities and all materials have been inspected and certified to be free of disease and suitable for exportation. All properties listed are typical characteristics and are not specifications. All suggestions and data are offered in good faith but without guarantee as conditions and methods of use of our products are beyond our control. All claims must be made within 30 days following the date of delivery. The prospective user must determine the suitability of our materials before adopting them on a commercial scale. Suggested uses of our products are not recommendations to use our products in violation of any patent or as a license under any patent of Rockland Immunochemicals, Inc. If you require a commercial license to use this material and do not have one, then return this material, unopened to: Rockland Inc., P.O. BOX 5199, Limerick, Pennsylvania, USA.