

Datasheet for 600-401-CB5

JMJD1C Antibody

Overview

| | |
|----------------------|---|
| Description: | Anti-JMJD1C (RABBIT) Antibody - 600-401-CB5 |
| Item No.: | 600-401-CB5 |
| Size: | 100 µg |
| Applications: | ELISA, IF, IHC, WB |
| Reactivity: | Human, Mouse, Rat |
| Host Species: | Rabbit |

Product Details

| | |
|----------------------|--|
| Background: | The jumonji domain containing 1C protein (JMJD1C) was initially discovered in silico, and later suggested to be a candidate gene for autism. Like the related proteins JMJD1A and JMJD1B, JMJD1C is a histone H3K9 demethylase implicated in the nuclear hormone receptor-based transcriptional regulation. JMJD1C mRNA is highly expressed in undifferentiated embryonic stem (ES) cells as well as pancreatic islet, diffuse-type gastric cancer, and other tissues and tumors. The JMJD1C gene promoter contain bHLH-, AP-1-, and POU5F1-binding sites, and as preferential expression of POU5F1 has been reported in ES cells, pancreatic islet, and diffuse-type gastric cancer, it has been suggested that POU5F1-mediated expression of JMJD1C reactivates previously silenced genes in ES cells and diffuse-type gastric cancer. At least three isoforms of JMJD1C are known to exist. |
| Synonyms: | JMJD1C Antibody, TRIP8, JHDM2C, KIAA1380, TRIP8, Probable JmjC domain-containing histone demethylation protein 2C, Jumonji domain-containing protein 1C, TR-interacting protein 8 |
| Host Species: | Rabbit |
| Clonality: | Polyclonal |
| Format: | IgG |

Target Details

| | |
|------------------------|--------------------|
| Gene Name: | JMJD1C |
| Reactivity: | Human, Mouse, Rat |
| Immunogen Type: | Conjugated Peptide |

Immunogen: Anti-JMJD1C antibody was prepared from whole rabbit serum produced by repeated immunizations with a 20 amino acid synthetic peptide from near the N-terminus of human JMJD1C.

Purity/Specificity: Anti-JMJD1C Antibody was affinity purified from monospecific antiserum by immunoaffinity chromatography. This antibody will not cross-react with JMJD1A or JMJD1B.

Relevant Links:

- [UniProtKB - Q15652](#)
- [GeneID - 221037](#)
- [NCBI - NP_116165](#)

Application Details

Tested Applications: ELISA, IF, IHC, WB

Application Note: Anti-JMJD1C Antibody has been tested for use in ELISA, Western Blotting, Immunohistochemistry and Immunofluorescence. Specific conditions for reactivity should be optimized by the end user. Expect a band at approximately 285 kDa in Western Blots of specific cell lysates and tissues.

Assay Dilutions: All assays should be optimized by the user. Recommended dilutions (if any) may be listed below.

ELISA: 1:10,000 - 1:20,000

IF: 20 µg/mL

IHC: 2.5 µg/mL

WB: 1-2 µg/mL

Formulation

Physical State: Liquid (sterile filtered)

Concentration: 1 mg/mL by UV absorbance at 280 nm

Buffer: 0.01 M Sodium Phosphate, 0.25 M Sodium Chloride, pH 7.2

Preservative: 0.02% (w/v) Sodium Azide

Stabilizer: None

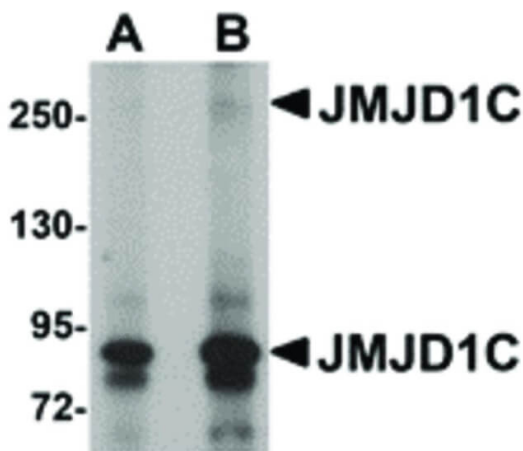
Shipping & Handling

Shipping Condition: Dry Ice

Storage Condition: Store vial at -20° C prior to opening. Aliquot contents and freeze at -20° C or below for extended storage. Avoid cycles of freezing and thawing. Centrifuge product if not completely clear after standing at room temperature. This product is stable for several weeks at 4° C as an undiluted liquid. Dilute only prior to immediate use.

Expiration: Expiration date is one (1) year from date of receipt.

Images



Western Blot

Western Blot of JMJD1C antibody. Lane 1: human liver tissue lysate with JMJD1C antibody at 1 µg/mL. Lane 2: human liver tissue lysate with JMJD1C antibody at 2 µg/mL. Secondary antibody: Peroxidase rabbit secondary antibody at 1:10,000 for 45 min at RT. Block: 5% BLOTTO overnight at 4°C. Predicted/Observed size: 285 kDa, 255 kDa for JMJD1C. Other band(s): JMJD1C splice variants and isoforms.

Disclaimer

This product is for research use only and is not intended for therapeutic or diagnostic applications. Please contact a technical service representative for more information. All products of animal origin manufactured by Rockland Immunochemicals are derived from starting materials of North American origin. Collection was performed in United States Department of Agriculture (USDA) inspected facilities and all materials have been inspected and certified to be free of disease and suitable for exportation. All properties listed are typical characteristics and are not specifications. All suggestions and data are offered in good faith but without guarantee as conditions and methods of use of our products are beyond our control. All claims must be made within 30 days following the date of delivery. The prospective user must determine the suitability of our materials before adopting them on a commercial scale. Suggested uses of our products are not recommendations to use our products in violation of any patent or as a license under any patent of Rockland Immunochemicals, Inc. If you require a commercial license to use this material and do not have one, then return this material, unopened to: Rockland Inc., P.O. BOX 5199, Limerick, Pennsylvania, USA.