

**Datasheet for 600-401-CB2****JAKMIP2 Antibody****Overview**

|                      |  |
|----------------------|--|
| <b>Description:</b>  | Anti-JAKMIP2 (RABBIT) Antibody - 600-401-CB2 |
| <b>Item No.:</b>     | 600-401-CB2                                  |
| <b>Size:</b>         | 100 µg                                       |
| <b>Applications:</b> | ELISA, WB                                    |
| <b>Reactivity:</b>   | Human, Mouse                                 |
| <b>Host Species:</b> | Rabbit                                       |

**Product Details**

|                      |   |
|----------------------|---|
| <b>Background:</b>   | JAKMIP2, also known as neuroendocrine long coiled-coil protein 1 (NECC1), is a member of the JAKMIP family of proteins whose members are thought play a role in JAK1 signaling and the regulation of microtubule cytoskeleton rearrangements. JAKMIP2 is expressed predominantly in neuronal cells but unlike JAKMIP1, JAKMIP2 localizes to the Golgi complex. It has been suggested that JAKMIP2 may play important roles in the control of the regulated secretory pathway. |
| <b>Synonyms:</b>     | JAKMIP2 Antibody, NECC1, JAMIP2, KIAA0555, NECC1, Janus kinase and microtubule-interacting protein 2, CTCL tumor antigen HD-CL-04   |
| <b>Host Species:</b> | Rabbit  |
| <b>Clonality:</b>    | Polyclonal  |
| <b>Format:</b>       | IgG   |

**Target Details**

|                        |  |
|------------------------|--|
| <b>Gene Name:</b>      | JAKMIP2  |
| <b>Reactivity:</b>     | Human, Mouse   |
| <b>Immunogen Type:</b> | Conjugated Peptide   |
| <b>Immunogen:</b>      | Anti- JAKMIP2 antibody was prepared from whole rabbit serum produced by repeated immunizations with a 16 amino acid peptide near the internal region of human JAKMIP2. |

|                            |   |
|----------------------------|---|
| <b>Purity/Specificity:</b> | Anti-JAKMIP2 Antibody was affinity purified from monospecific antiserum by immunoaffinity chromatography. At least four isoforms of JAKMIP2 are known to exist; this antibody will detect all four isoforms. JAKMIP2 antibody is predicted to not cross-react with JAKMIP1. |
| <b>Relevant Links:</b>     | <ul style="list-style-type: none"><li>• <a href="#">UniProtKB - Q96AA8</a></li><li>• <a href="#">GeneID - 9832</a></li><li>• <a href="#">NCBI - NP_055605</a></li></ul>   |

## Application Details

|                             |   |
|-----------------------------|---|
| <b>Tested Applications:</b> | ELISA, WB   |
| <b>Application Note:</b>    | Anti-JAKMIP2 Antibody has been tested for use in ELISA and Western Blotting. Specific conditions for reactivity should be optimized by the end user. Expect a band at approximately 95 kDa in Western Blots of specific cell lysates and tissues. |
| <b>Assay Dilutions:</b>     | All assays should be optimized by the user. Recommended dilutions (if any) may be listed below.   |
| <b>ELISA:</b>               | 1:10,000 - 1:20,000   |
| <b>WB:</b>                  | 1-2 µg/mL   |

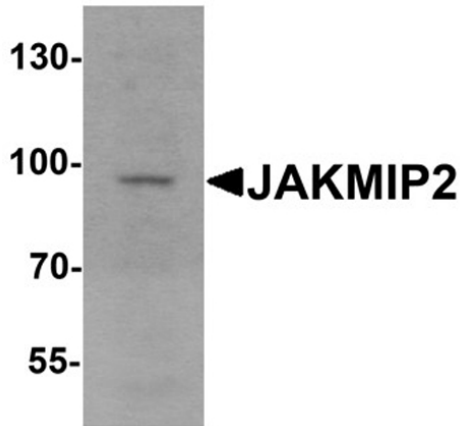
## Formulation

|                        |   |
|------------------------|---|
| <b>Physical State:</b> | Liquid (sterile filtered)                               |
| <b>Concentration:</b>  | 1 mg/mL by UV absorbance at 280 nm                      |
| <b>Buffer:</b>         | 0.01 M Sodium Phosphate, 0.25 M Sodium Chloride, pH 7.2 |
| <b>Preservative:</b>   | 0.02% (w/v) Sodium Azide                                |
| <b>Stabilizer:</b>     | None  |

## Shipping & Handling

|                            |   |
|----------------------------|---|
| <b>Shipping Condition:</b> | Dry Ice   |
| <b>Storage Condition:</b>  | Store vial at -20° C prior to opening. Aliquot contents and freeze at -20° C or below for extended storage. Avoid cycles of freezing and thawing. Centrifuge product if not completely clear after standing at room temperature. This product is stable for several weeks at 4° C as an undiluted liquid. Dilute only prior to immediate use. |
| <b>Expiration:</b>         | Expiration date is one (1) year from date of receipt.   |

## Images



### Western Blot

Western blot analysis of JAKMIP2.

Load: mouse brain tissue lysate.

Primary Antibody: JAKMIP2 antibody at 1 µg/mL.

## Disclaimer

This product is for research use only and is not intended for therapeutic or diagnostic applications. Please contact a technical service representative for more information. All products of animal origin manufactured by Rockland Immunochemicals are derived from starting materials of North American origin. Collection was performed in United States Department of Agriculture (USDA) inspected facilities and all materials have been inspected and certified to be free of disease and suitable for exportation. All properties listed are typical characteristics and are not specifications. All suggestions and data are offered in good faith but without guarantee as conditions and methods of use of our products are beyond our control. All claims must be made within 30 days following the date of delivery. The prospective user must determine the suitability of our materials before adopting them on a commercial scale. Suggested uses of our products are not recommendations to use our products in violation of any patent or as a license under any patent of Rockland Immunochemicals, Inc. If you require a commercial license to use this material and do not have one, then return this material, unopened to: Rockland Inc., P.O. BOX 5199, Limerick, Pennsylvania, USA.