

**Datasheet for 600-401-CB1****JAKMIP1 Antibody****Overview**

<b>Description:</b>	Anti-JAKMIP1 (RABBIT) Antibody - 600-401-CB1
<b>Item No.:</b>	600-401-CB1
<b>Size:</b>	100 µg
<b>Applications:</b>	ELISA, WB
<b>Reactivity:</b>	Human, Mouse, Rat
<b>Host Species:</b>	Rabbit

**Product Details**

<b>Background:</b>	JAKMIP1, also known as Marlin-1, is a highly-conserved vertebrate-specific microtubule-associated protein that plays a role in JAK1 signaling and regulate microtubule cytoskeleton rearrangements. JAKMIP1 is expressed predominantly in neuronal and lymphoid cells and colocalizes with microtubules. Multiple isoforms of JAKMIP1 are known to exist: isoforms 1 and 5 are also expressed in liver, lung and skeletal muscle, while isoforms 2-4 are specifically expressed in brain and retina. JAKMIP1 participates in polarized secretion in lymphocytes and it has been suggested to be a novel effector memory gene restraining T cell-mediated cytotoxicity. Dysregulation of JAKMIP1 gene expression is associated with genetic conditions linked to autism in humans.
<b>Synonyms:</b>	JAKMIP1 Antibody, JAMIP1, MARLIN1, Gababrbp, GABABRBP, JAMIP1, Janus kinase and microtubule-interacting protein 1, GABA-B receptor-binding protein, Marlin-1
<b>Host Species:</b>	Rabbit
<b>Clonality:</b>	Polyclonal
<b>Format:</b>	IgG

**Target Details**

<b>Gene Name:</b>	JAKMIP1
<b>Reactivity:</b>	Human, Mouse, Rat
<b>Immunogen Type:</b>	Conjugated Peptide

<b>Immunogen:</b>	Anti- JAKMIP1 antibody was prepared from whole rabbit serum produced by repeated immunizations with a 16 amino acid peptide near the internal region of human JAKMIP1.
<b>Purity/Specificity:</b>	Anti-JAKMIP1 Antibody was affinity purified from monospecific antiserum by immunoaffinity chromatography. Multiple isoforms of JAKMIP1 are known to exist. JAKMIP1 antibody is predicted to not cross-react with JAKMIP2.
<b>Relevant Links:</b>	<ul style="list-style-type: none"><li>• <a href="#">UniProtKB - Q96N16</a></li><li>• <a href="#">GeneID - 152789</a></li><li>• <a href="#">NCBI - NP_653321</a></li></ul>

## Application Details

<b>Tested Applications:</b>	ELISA, WB
<b>Application Note:</b>	Anti-JAKMIP1 Antibody has been tested for use in ELISA and Western Blotting. Specific conditions for reactivity should be optimized by the end user. Expect a band at approximately 73 kDa in Western Blots of specific cell lysates and tissues.
<b>Assay Dilutions:</b>	All assays should be optimized by the user. Recommended dilutions (if any) may be listed below.
<b>ELISA:</b>	1:10,000 - 1:20,000
<b>WB:</b>	1-2 µg/mL

## Formulation

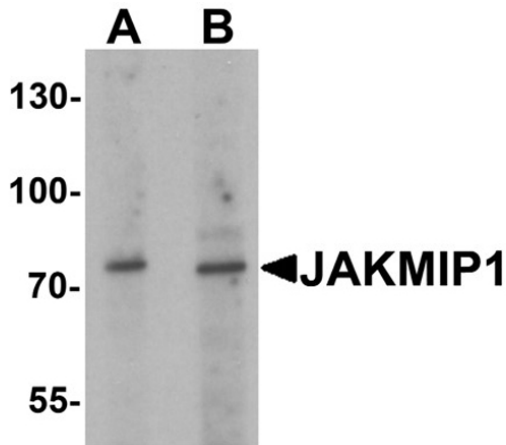
<b>Physical State:</b>	Liquid (sterile filtered)
<b>Concentration:</b>	1 mg/mL by UV absorbance at 280 nm
<b>Buffer:</b>	0.01 M Sodium Phosphate, 0.25 M Sodium Chloride, pH 7.2
<b>Preservative:</b>	0.02% (w/v) Sodium Azide
<b>Stabilizer:</b>	None

## Shipping & Handling

<b>Shipping Condition:</b>	Dry Ice
<b>Storage Condition:</b>	Store vial at -20° C prior to opening. Aliquot contents and freeze at -20° C or below for extended storage. Avoid cycles of freezing and thawing. Centrifuge product if not completely clear after standing at room temperature. This product is stable for several weeks at 4° C as an undiluted liquid. Dilute only prior to immediate use.

**Expiration:** Expiration date is one (1) year from date of receipt.

## Images



### Western Blot

Western blot analysis of JAKMIP1.

Load: rat brain tissue lysate.

Primary Antibody: JAKMIP1 antibody at (A) 1 and (B) 2  $\mu\text{g}/\text{mL}$ .

## Disclaimer

This product is for research use only and is not intended for therapeutic or diagnostic applications. Please contact a technical service representative for more information. All products of animal origin manufactured by Rockland Immunochemicals are derived from starting materials of North American origin. Collection was performed in United States Department of Agriculture (USDA) inspected facilities and all materials have been inspected and certified to be free of disease and suitable for exportation. All properties listed are typical characteristics and are not specifications. All suggestions and data are offered in good faith but without guarantee as conditions and methods of use of our products are beyond our control. All claims must be made within 30 days following the date of delivery. The prospective user must determine the suitability of our materials before adopting them on a commercial scale. Suggested uses of our products are not recommendations to use our products in violation of any patent or as a license under any patent of Rockland Immunochemicals, Inc. If you require a commercial license to use this material and do not have one, then return this material, unopened to: Rockland Inc., P.O. BOX 5199, Limerick, Pennsylvania, USA.