

**Datasheet for 600-401-CB0****ITCH Antibody****Overview**

<b>Description:</b>	Anti-ITCH (RABBIT) Antibody - 600-401-CB0
<b>Item No.:</b>	600-401-CB0
<b>Size:</b>	100 µg
<b>Applications:</b>	ELISA, WB
<b>Reactivity:</b>	Human, Mouse, Rat
<b>Host Species:</b>	Rabbit

**Product Details**

<b>Background:</b>	The Itchy E3 ubiquitin protein ligase (ITCH) is a member of the Nedd4 family of HECT domain E3 ubiquitin ligases (1). HECT domain E3 ubiquitin ligases transfer ubiquitin from E2 ubiquitin-conjugating enzymes to protein substrates, thus targeting specific proteins for lysosomal degradation. ITCH plays a role in multiple cellular processes including erythroid and lymphoid cell differentiation and the regulation of immune responses (2). In B cells, ITCH is thought to associate with latent membrane protein 2A (LMP2A) of Epstein-Barr virus, specifically down-regulating its activity in B cell signaling (3). Mutations in this gene are a cause of syndromic multisystem autoimmune disease (4).
<b>Synonyms:</b>	ITCH Antibody, AIF4, AIP4, NAPP1, dJ468O1.1, E3 ubiquitin-protein ligase Itchy homolog, Atrophia-1-interacting protein 4, Itch
<b>Host Species:</b>	Rabbit
<b>Clonality:</b>	Polyclonal
<b>Format:</b>	IgG

**Target Details**

<b>Gene Name:</b>	ITCH
<b>Reactivity:</b>	Human, Mouse, Rat
<b>Immunogen Type:</b>	Conjugated Peptide
<b>Immunogen:</b>	Anti-ITCH antibody was prepared from whole rabbit serum produced by repeated immunizations with a 15 amino acid peptide near the N-terminus of human ITCH.

**Purity/Specificity:** Anti-ITCH antibody was affinity purified from monospecific antiserum by immunoaffinity chromatography. ITCH antibody is human, mouse and rat reactive. At least three isoforms of ITCH are known to exist; this antibody only recognizes the two longest isoforms. This antibody is predicted to not cross-react with other members of the Nedd4 protein family.

**Relevant Links:**

- [UniProtKB - Q96J02](#)
- [GeneID - 83737](#)
- [NCBI - NP\\_001244066](#)

## Application Details

**Tested Applications:** ELISA, WB

**Application Note:** Anti-ITCH Antibody has been tested for use in ELISA and Western Blotting. Specific conditions for reactivity should be optimized by the end user. Expect a band at approximately 103 kDa in Western Blots of specific cell lysates and tissues.

**Assay Dilutions:** All assays should be optimized by the user. Recommended dilutions (if any) may be listed below.

**ELISA:** 1:10,000 - 1:20,000

**WB:** 1-2 µg/mL

## Formulation

**Physical State:** Liquid (sterile filtered)

**Concentration:** 1 mg/mL by UV absorbance at 280 nm

**Buffer:** 0.01 M Sodium Phosphate, 0.25 M Sodium Chloride, pH 7.2

**Preservative:** 0.02% (w/v) Sodium Azide

**Stabilizer:** None

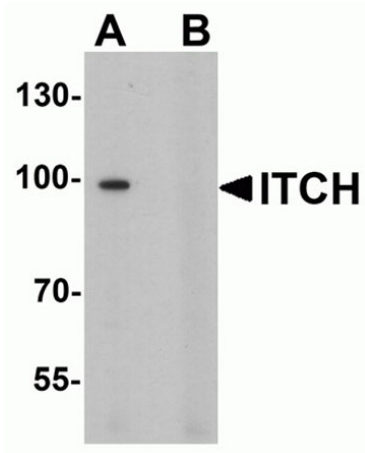
## Shipping & Handling

**Shipping Condition:** Dry Ice

**Storage Condition:** Store vial at -20° C prior to opening. Aliquot contents and freeze at -20° C or below for extended storage. Avoid cycles of freezing and thawing. Centrifuge product if not completely clear after standing at room temperature. This product is stable for several weeks at 4° C as an undiluted liquid. Dilute only prior to immediate use.

**Expiration:** Expiration date is one (1) year from date of receipt.

## Images



### Western Blot

Western blot analysis of ITCH.

Load: 3T3 cell lysate.

Primary Antibody: ITCH antibody at 1  $\mu\text{g}/\text{ml}$  in (A) the absence and (B) the presence of blocking peptide.

## Disclaimer

This product is for research use only and is not intended for therapeutic or diagnostic applications. Please contact a technical service representative for more information. All products of animal origin manufactured by Rockland Immunochemicals are derived from starting materials of North American origin. Collection was performed in United States Department of Agriculture (USDA) inspected facilities and all materials have been inspected and certified to be free of disease and suitable for exportation. All properties listed are typical characteristics and are not specifications. All suggestions and data are offered in good faith but without guarantee as conditions and methods of use of our products are beyond our control. All claims must be made within 30 days following the date of delivery. The prospective user must determine the suitability of our materials before adopting them on a commercial scale. Suggested uses of our products are not recommendations to use our products in violation of any patent or as a license under any patent of Rockland Immunochemicals, Inc. If you require a commercial license to use this material and do not have one, then return this material, unopened to: Rockland Inc., P.O. BOX 5199, Limerick, Pennsylvania, USA.